



Haslemere Avenue

London, SW18

£3,750 per month
(£865.38 per week)

Four bedroom terraced house comprising an entrance hallway, a fitted kitchen to the rear leading to the garden, three bedrooms in the first floor and a further large double bedroom with en-suite bathroom on the second floor.

CHESTERTONS



Haslemere Avenue

London, SW18

- Four Bedrooms
- Two Bathrooms
- Large Private Garden
- Close to local amenities
- Wimbledon Primary school nearby
- Property will be refurbished throughout

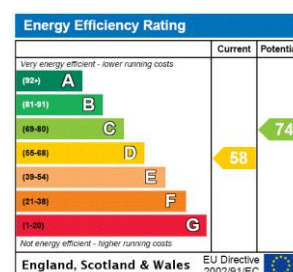


Four bedroom terraced house comprising an entrance hallway, a fitted kitchen to the rear leading to the garden, three bedrooms in the first floor and a further large double bedroom with ensuite bathroom on the second floor.

Haslemere Avenue is located on a residential street providing easy access to all local amenities Earlsfield and Wimbledon park have to offer as well as the green spaces of Wimbledon park and King George's park.

Earlsfield Train station is circa .3 miles away, Wimbledon Park tube is .07 miles away and Wimbledon Park primary school is .02 miles away.

Minimum Term: 12 months
Deposit Required: £4,326.92
Local Authority: London Borough Of Merton
Council Tax Band: E
EPC Rating: D
Unfurnished



Chestertons Wandsworth Lettings

11 Huguenot Place
 London
 SW18 2EN
wandsworth@chestertons.co.uk
 02081047540
chestertons.co.uk

Additional tenant charges apply (fees apply to non-AST tenancies only)
 Tenancy Agreement Fee: £300
 References per Tenant/Guarantor: £60
 Inventory check (approx. £100 – £250 inc. VAT)
chestertons.co.uk/property-to-rent/applicable-fees

Haslemere Road, SW18

Approximate gross internal area

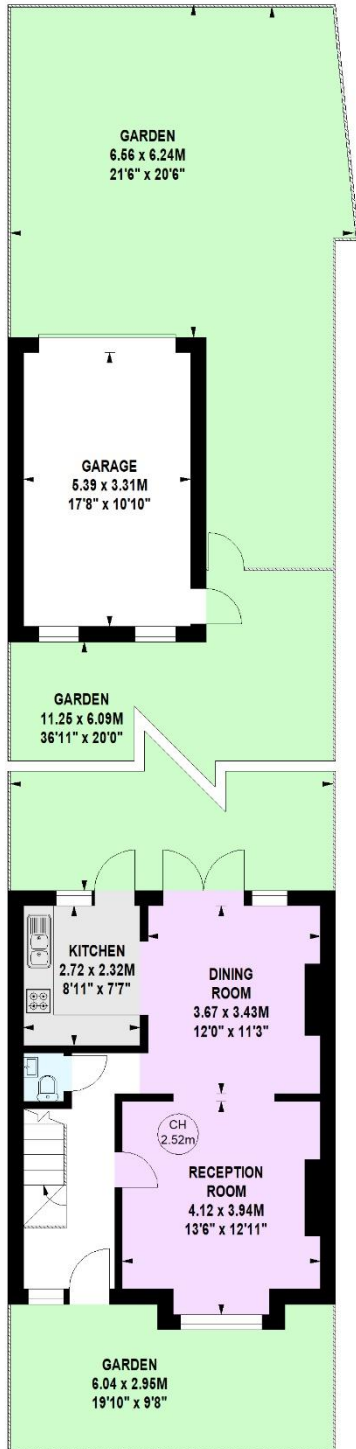
128.02 sq m / 1378 sq ft

(Including Eaves Storage)

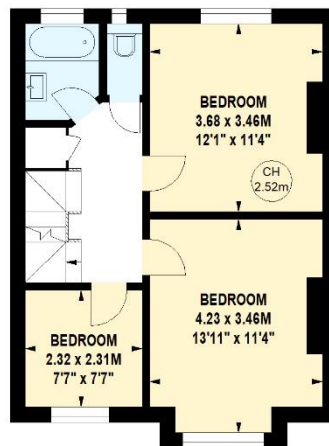
Eaves Storage

11.71 sq m / 126 sq ft

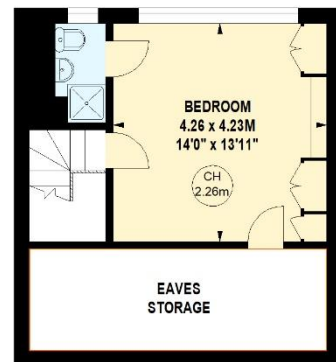
Key :
CH - Ceiling Height



Ground Floor



First Floor



Second Floor

Not to scale, for guidance only and must not be relied upon as a statement of fact.
All measurements and areas are approximate only

