



# Marcus Terrace

Wandsworth, SW18

£1,950 per month

A stunning first floor purpose built Victorian flat, situated on an extremely quiet residential street in the heart of Wandsworth. The flat is beautifully presented with neutral décor and boasts a wealth of character and period features including high ceilings and sash windows. The accommodation is well proportioned, light and airy and offers generous storage space.



# Marcus Terrace

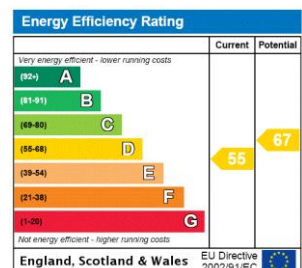
Wandsworth, SW18

- A stunning first floor purpose built Victorian flat
- Situated on an extremely quiet residential street in the heart of Wandsworth
- Beautifully presented with neutral décor
- Boasts a wealth of character and period features including high ceilings and sash windows
- Well proportioned, light and airy and offers generous storage space
- Spacious reception room with a beautiful bay window and a period fireplace
- Lovely master bedroom
- Second smaller bedroom



A stunning first floor purpose built Victorian flat, situated on an extremely quiet residential street in the heart of Wandsworth. The flat is beautifully presented with neutral décor and boasts a wealth of character and period features including high ceilings and sash windows. The accommodation is well proportioned, light and airy and offers generous storage space. The property comprises a spacious reception room with a beautiful bay window and a period fireplace, a lovely master bedroom and a second smaller bedroom, a kitchen/breakfast room with modern kitchen units and ample space for a dining table and a modern bathroom. The flat is located on Marcus Terrace, a popular quiet cul-de-sac running off Marcus Street. Wandsworth Town Mainline station and the cafes,

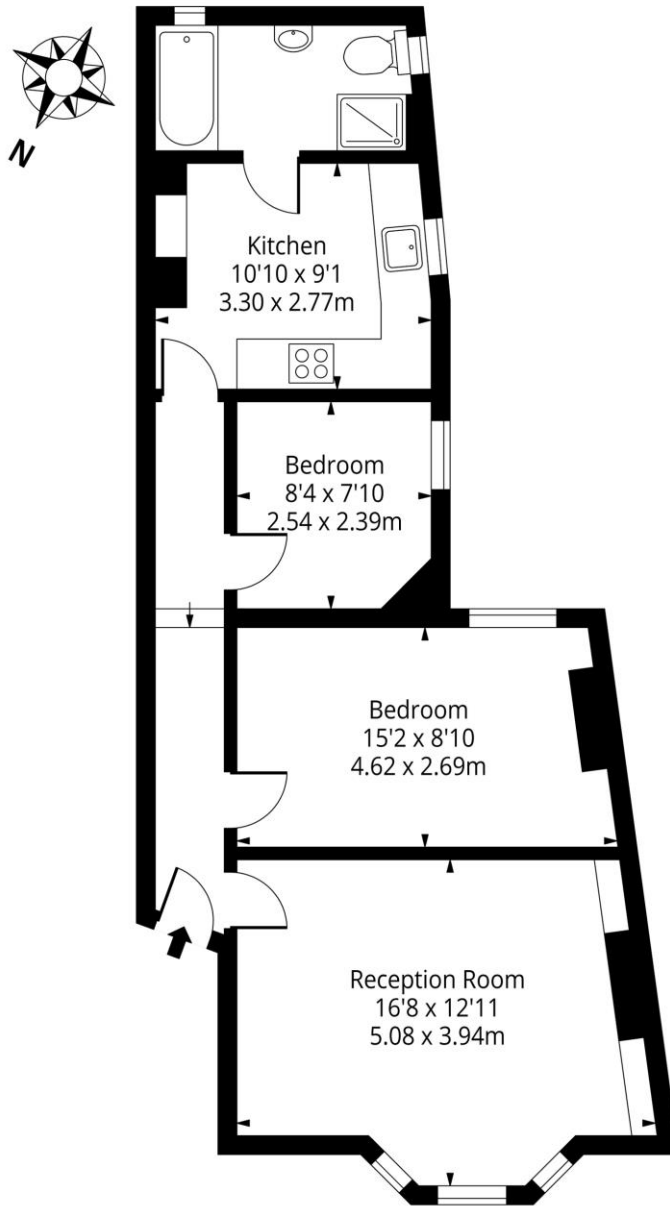
**Minimum Term:** 6 months  
**Deposit Required:** 5 weeks  
**Local Authority:** Wandsworth  
**Council Tax Band:** C  
**EPC Rating:** D  
**Part Furnished**



### Chestertons Wandsworth Town Lettings

47 East Hill  
 London  
 SW18 2QE  
 wandsworthlettingsusers@chestertons.co.uk  
 02081047540  
 chestertons.co.uk

Additional tenant charges apply (fees apply to non-AST tenancies only)  
 Tenancy Agreement Fee: £300  
 References per Tenant/Guarantor: £60  
 Inventory check (approx. £100 – £250 inc. VAT)  
[chestertons.co.uk/property-to-rent/applicable-fees](http://chestertons.co.uk/property-to-rent/applicable-fees)

**Marcus Terrace, SW18****First Floor**

Approx Gross Internal Area **621 Sq Ft - 57.69 Sq M**

For Illustration Purposes Only - Not To Scale

Ref: No. 38610

