

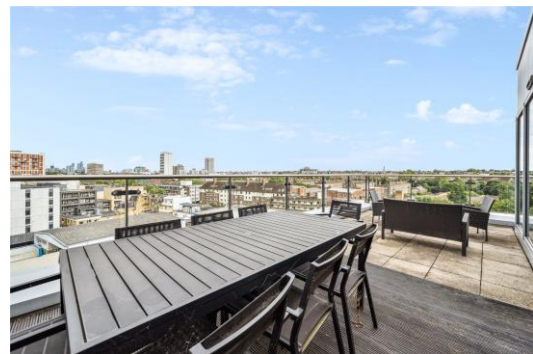


# Flotilla House

Juniper Drive, SW18

£4,500 per month  
(£1,038.46 per week)

An immaculate three double bedroom apartment in the popular Battersea Reach development. Featuring a spacious private terrace and excellent entertaining space.



# Flotilla House

## Juniper Drive, SW18

- Three double bedrooms
- Open plan lounge and kitchen
- Great entertaining space
- Private roof terrace



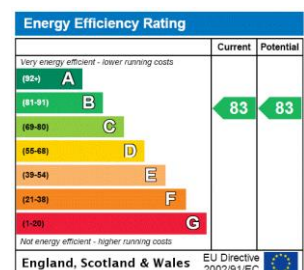


An immaculate apartment in the popular Battersea Reach development. On entering you are greeted by a bright and spacious living area, bathed in natural light thanks to large windows that provide views of the surrounding area. The open-concept design connects the living room, dining area, and kitchen, creating a welcoming space that is perfect for entertaining guests or enjoying quality time with family. The contemporary kitchen features sleek countertops, high-end appliances, and ample storage space for all your culinary needs.

The apartment boasts three generously sized bedrooms, both designed with comfort and relaxation in mind. The master bedroom offers its own en-suite bathroom, complete with luxurious fixtures and finishes. The other two bedrooms are both generous double bedrooms and served by a stylishly appointed family bathroom.

Residents of Flotilla House have access to a range of amenities. These include a well-equipped fitness centre, a serene communal garden, and secure underground parking. Additionally, the property benefits from a dedicated concierge service.

**Minimum Term:** 12 months  
**Deposit Required:** £5,192.31  
**Local Authority:** Wandsworth  
**Council Tax Band:** G  
**EPC Rating:** B  
**Furnished**



### Chestertons Wandsworth Lettings

11 Huguenot Place  
 London  
 SW18 2EN  
[lettings.wandsworth@chestertons.co.uk](mailto:lettings.wandsworth@chestertons.co.uk)  
 02081047540  
[chestertons.co.uk](http://chestertons.co.uk)

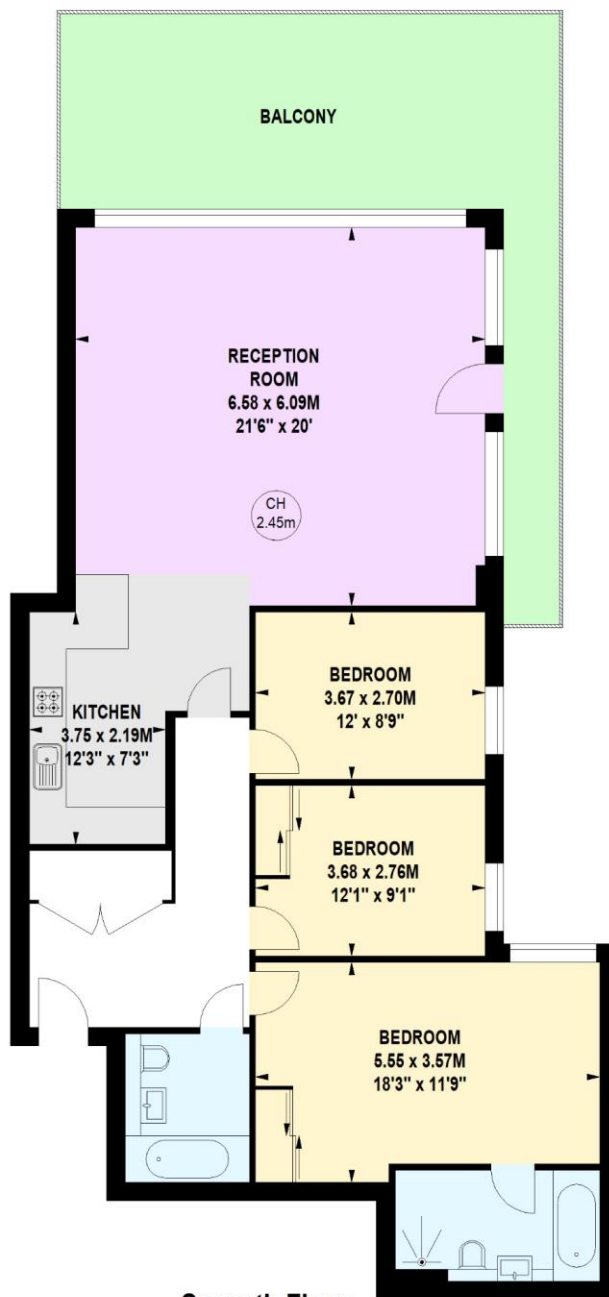
Additional tenant charges apply (fees apply to non-AST tenancies only)  
 Tenancy Agreement Fee: £300  
 References per Tenant/Guarantor: £60  
 Inventory check (approx. £100 – £250 inc. VAT)  
[chestertons.co.uk/property-to-rent/applicable-fees](http://chestertons.co.uk/property-to-rent/applicable-fees)

# **Flotilla House, Juniper Drive, SW18**

Approximate gross internal area

**116.50 sq m / 1254 sq ft**

Key :  
CH - Ceiling Height



**Seventh Floor**

**Not to scale, for guidance only and must not be relied upon as a statement of fact.  
All measurements and areas are approximate only**

