

# Chapel Yard

London, SW18

£3,250 per month  
(£750 per week)

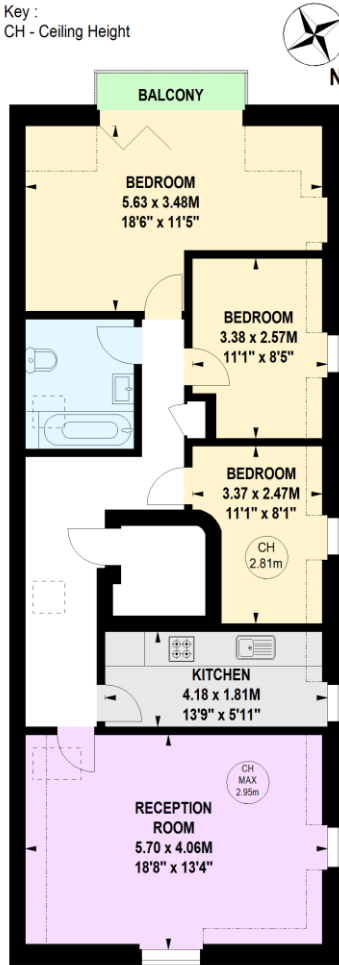
Modern three double bedroom apartment on the top floor of a refurbished block with wooden flooring throughout and a private balcony. Located within easy reach of Wandsworth Town.

**CHESTERTONS**

# Chapel Yard, SW18

Approximate gross internal area  
81.84 sq m / 881 sq ft

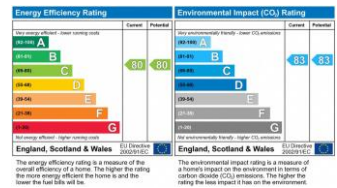
Key :  
CH - Ceiling Height



## Third Floor

Not to scale, for guidance only and must not be relied upon as a statement of fact.  
All measurements and areas are approximate only

**Minimum Term:** months  
**Deposit Required:** £0.00  
**Local Authority:** London Borough of Wandsworth  
**Council Tax Band:** E  
**EPC Rating:** C  
**Furnished**



### Chestertons FSL Battersea & Clapham Lettings

6 Battersea Rise  
 London  
 SW11 1ED  
 battersearise@chestertons.co.uk  
 02072985630  
 chestertons.co.uk

Additional tenant charges apply (fees apply to non-AST tenancies only)  
 Tenancy Agreement Fee: £300  
 References per Tenant/Guarantor: £60  
 Inventory check (approx. £100 – £250 inc. VAT)  
[chestertons.co.uk/property-to-rent/applicable-fees](http://chestertons.co.uk/property-to-rent/applicable-fees)

Chesterton Global Ltd trading as Chestertons for themselves and for the vendor of this property whose agents they are, give notice that (i) these particulars do not constitute any part of an offer or contract, (ii) all statements contained within these particulars are made without responsibility on the part of Chestertons or the vendor, (iii) whilst made in good faith, none of the statements contained within these particulars are to be relied upon as a statement or representation of fact, (iv) any intending purchasers must satisfy themselves by inspection or otherwise as to the correctness of each of the statements contained within these particulars, (v) the vendor does not make or give either Chestertons or any person in their employment any authority to make or give representation or warranty whatsoever in relation to this property. Wide angle lenses may be used. ©Copyright Chestertons | Chesterton Global Ltd | Registered Office 40 Connaught Street, Hyde Park, London W2 2AB Registered Company Number 05334580.



This paper is  
100% recyclable