

# Eastfields Avenue

London, SW18

£2,900 per month  
(£669.23 per week)

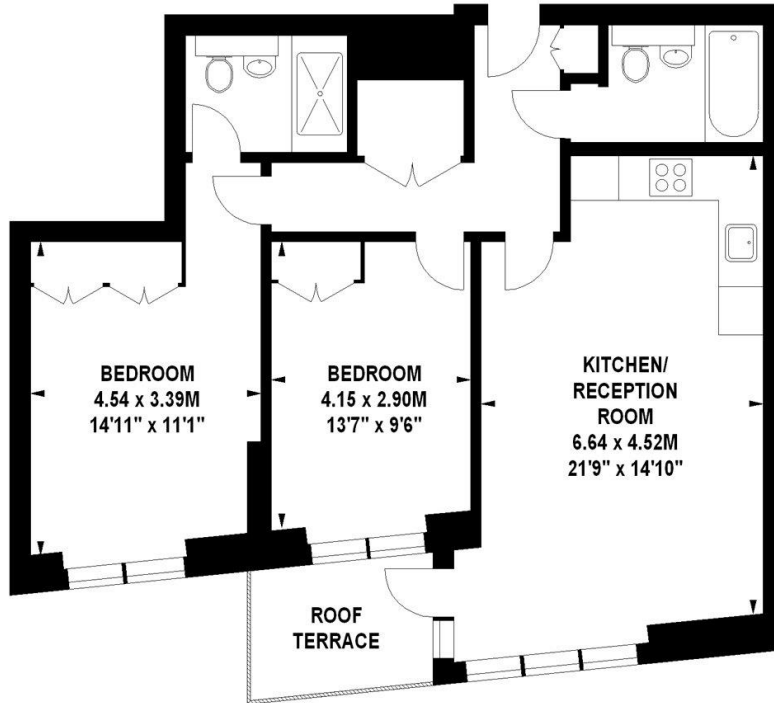
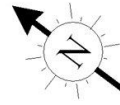
A modern two double bedroom apartment situated on the fifth floor of this highly sought after riverside development. The property is offered furnished and boasts a large open plan reception/kitchen, two double bedrooms, two contemporary bathrooms.

**CHESTERTONS**

# Eastfields Avenue, SW18

Approximate gross internal area

77.85 sq m / 838 sq ft



## Fifth Floor

Illustration For Identification Purposes Only. Not To Scale

\*Floorplan Drawn According To RICS Guidelines

Copyright of FeaturePRO

**Minimum Term:** 12 months  
**Deposit Required:** £0.00  
**Local Authority:**  
**Council Tax Band:**  
**EPC Rating:** B  
**Furnished**

Energy Efficiency Rating		Current	Potential
Very energy efficient - lower running costs			
(92+)	A		
(81-91)	B		
(69-80)	C	80	80
(55-68)	D		
(39-54)	E		
(21-38)	F		
(1-20)	G		
Not energy efficient - higher running costs			
England, Scotland & Wales		EU Directive 2002/91/EC	

### Chestertons Wandsworth Lettings

11 Huguenot Place  
London  
SW18 2EN  
wandsworth@chestertons.co.uk  
02081047540  
chestertons.co.uk

Additional tenant charges apply (fees apply to non-AST tenancies only)

Tenancy Agreement Fee: £300

References per Tenant/Guarantor: £60

Inventory check (approx. £100 – £250 inc. VAT)

[chestertons.co.uk/property-to-rent/applicable-fees](http://chestertons.co.uk/property-to-rent/applicable-fees)

Chesterton Global Ltd trading as Chestertons for themselves and for the vendor of this property whose agents they are, give notice that (i) these particulars do not constitute any part of an offer or contract, (ii) all statements contained within these particulars are made without responsibility on the part of Chestertons or the vendor, (iii) whilst made in good faith, none of the statements contained within these particulars are to be relied upon as a statement or representation of fact, (iv) any intending purchasers must satisfy themselves by inspection or otherwise as to the correctness of each of the statements contained within these particulars, (v) the vendor does not make or give either Chestertons or any person in their employment any authority to make or give representation or warranty whatsoever in relation to this property. Wide angle lenses may be used. ©Copyright Chestertons | Chesterton Global Ltd | Registered Office 40 Connaught Street, Hyde Park, London W2 2AB Registered Company Number 05334580.



This paper is  
100% recyclable