



Earlsfield Road

London, SW18

£3,000 per month
(£692.31 per week)

SHORT LET + BILLS INCLUDED. Offering a great location moments from Wandsworth Common, this modern 2 bedroom flat boasts stylish accommodation including two sizeable bedrooms, well presented kitchen and comes with private residents parking.



Earlsfield Road

London, SW18

- Short let
- All bills included
- 2 Double Bedrooms
- Private residents parking
- Next to Wandsworth Common
- Modern finish throughout
- Split over two floors

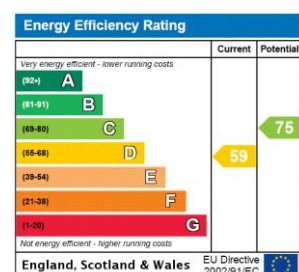


SHORT LET + ALL BILLS INCLUDED. Nestled on the highly desirable Earsfield Road in Wandsworth, this two-bedroom flat has its own private entrance split over two floors and boasts a perfect blend of style, space, and convenience, this property offers a unique opportunity to enjoy all that Wandsworth has to offer.

This flat features two generously sized bedrooms, high ceilings, lots of natural light. The heart of the home is its spacious open-plan living and dining area. Ideal for entertaining guests or cosy nights in, this versatile space effortlessly flows into the modern kitchen. The property comes with its own private residents parking.

Earlsfield Road is located at the Wandsworth Common end of the street, conveniently located within easy reach of Earlsfield mainline station as well as all the bars, restaurants and shops on St. John's Hill and Bellevue Road. Clapham Junction is also close by as well as the shops and bars of Northcote Road.

Minimum Term: 1 month
Deposit Required: £1,384.62
Local Authority: Wandsworth
Council Tax Band: C
EPC Rating: D
Furnished



Chestertons Wandsworth Lettings

11 Huguenot Place
 London
 SW18 2EN
 wandsworth@chestertons.co.uk
 02081047540
 chestertons.co.uk

Additional tenant charges apply (fees apply to non-AST tenancies only)
 Tenancy Agreement Fee: £300
 References per Tenant/Guarantor: £60
 Inventory check (approx. £100 – £250 inc. VAT)
chestertons.co.uk/property-to-rent/applicable-fees

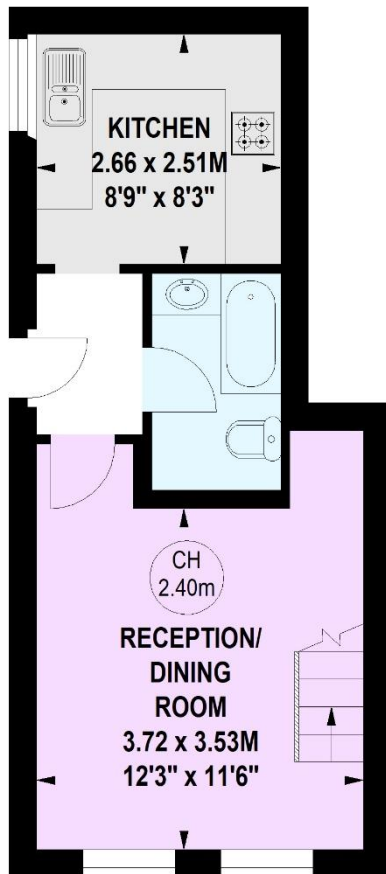
Earlsfield Road, SW18

Approximate gross internal area

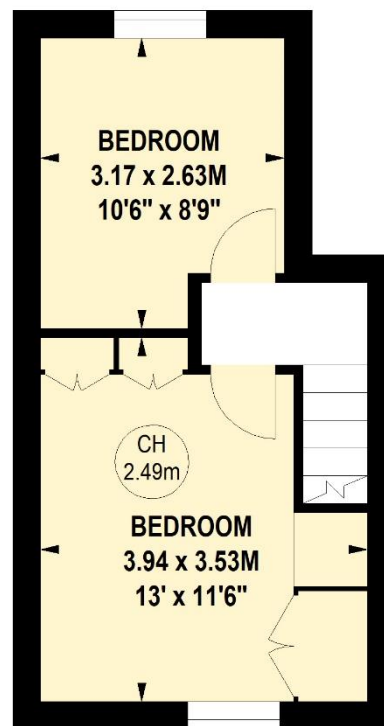
50.82 sq m / 547 sq ft



Key :
CH - Ceiling Height



Ground Floor



First Floor

**Not to scale, for guidance only and must not be relied upon as a statement of fact.
All measurements and areas are approximate only**

