



Greyhound Parade
London, SW17

CHESTERTONS





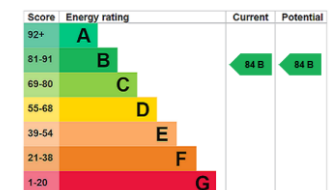
A modern and immaculately presented fourth floor apartment. The space offers almost 580 sq. ft. with a double bedroom and South facing balcony.

The property comes with an underlying lease of over 240 years.

The development benefits from a 24 hour concierge, lift, video entry system and within walking distance to Haydons Road Station (0.7 miles) , Tooting Broadway Tube Station (1.1 miles) and Earlsfield station.

- Chain free
- Modern
- One bedroom
- Bike storage
- Haydons Road Station (0.7 miles)
- Earlsfield Station (1 mile)
- Earlsfield Station (1 mile)
- Tooting Broadway Tube Station (1.1 miles)

Offers in excess of
£375,000



Tenure: Leasehold 241 years remaining

Service Charge: £2391 per annum

Local Authority: London Borough of Merton

Council Tax Band: C

Chestertons Wandsworth Sales

47 East Hill

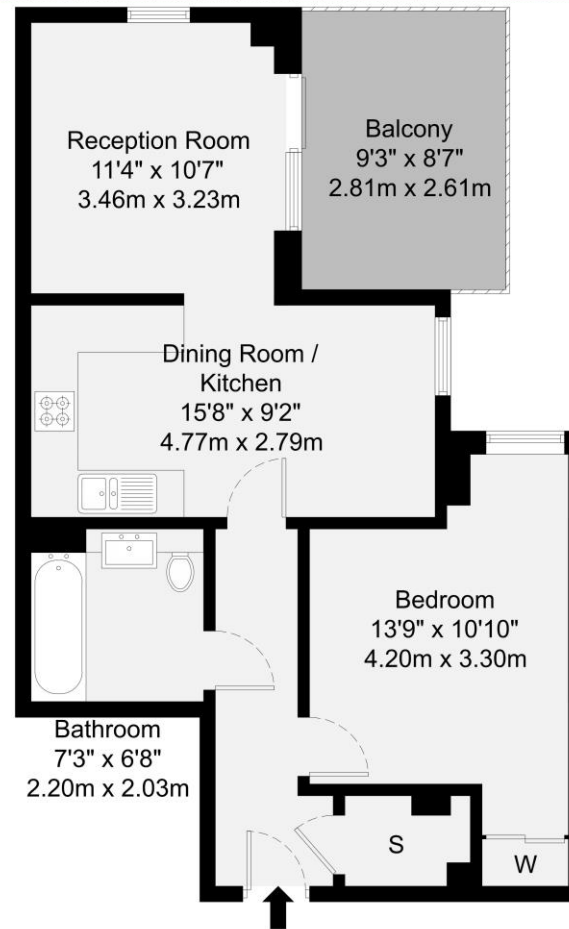
London

SW18 2QE

wandsworth@chestertons.co.uk

0208 104 7530

chestertons.co.uk



Fourth Floor

GROSS INTERNAL AREA (GIA)
The footprint of the property
53.7 sq m / 578 sq ft

TOTAL STORAGE SPACE
Storage and wardrobes total area
2.5 sq m / 26 sq ft

EXTERNAL FEATURES
Garden, Balcony, Terrace, Verandah etc.
7.3 sq m / 78 sq ft

RESTRICTED HEAD HEIGHT
Limited use area under 1.5m
0.0 sq m / 0.0 sq ft

Disclaimer: Floorplan measurements are approximate and are for illustrative purposes only. While we do not doubt the floorplan accuracy and completeness, you or your advisors should conduct a careful, independent investigation of the property in respect of monetary valuation.

Maison
VUE

