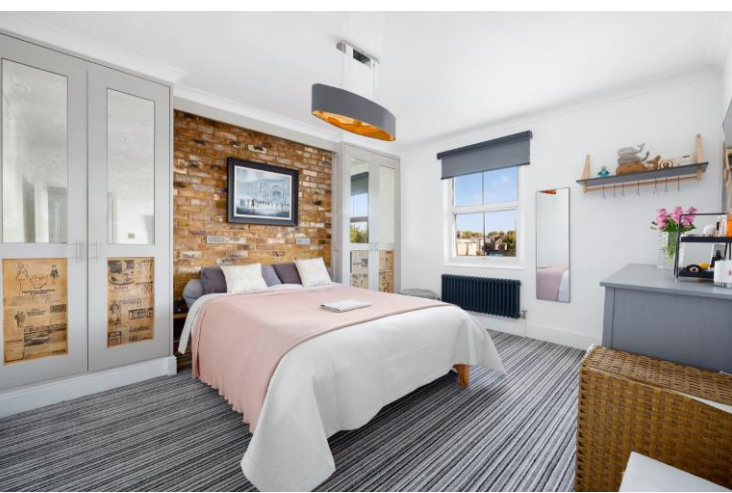




Allfarthing Lane  
London, SW18

CHESTERTONS









Set within a charming end of terrace period building, this beautifully presented split level top floor conversion offers over 760 sq. ft. of light filled living space and a sunny dual aspect, enhancing the sense of space and natural light throughout.

This well maintained home is in good condition, featuring a thoughtfully arranged layout that provides separation between living and sleeping areas. The generous reception room enjoys elevated views and ample sunlight, while the separate kitchen offers practical workspace and thoughtfully designed with exposed brick throughout.

Upstairs, the bedroom/office benefits from a peaceful outlook, excellent proportions, and access to a larger than normal eaves storage space. Additional features include a comfortable double bedroom with large fitted wardrobes overlooking St. Ann's Hill.

Ideally suited to first time buyers, professional couples, or investors, this top floor flat combines period character with modern convenience, all within a desirable and well connected location.

- Top floor
- Split level
- Period conversion
- Over 760 sq. ft.
- Great condition
- King Georges Park 0.5 miles

Asking Price £600,000

Score	Energy rating	Current	Potential
92+	A		
81-91	B		
69-80	C	72 C	79 C
55-68	D		
39-54	E		
21-38	F		
1-20	G		

**Tenure:** Leasehold 106 years remaining

**Service Charge:** £1700 per annum

**Ground Rent:** £200 per annum

**Local Authority:** London Borough of Wandsworth

**Council Tax Band:** D

*Chestertons Wandsworth Sales*

47 East Hill

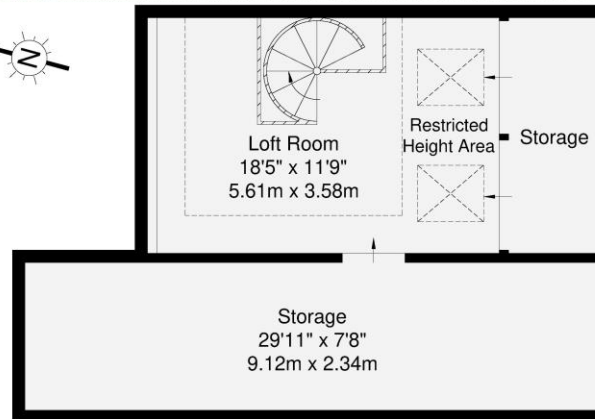
London

SW18 2QE

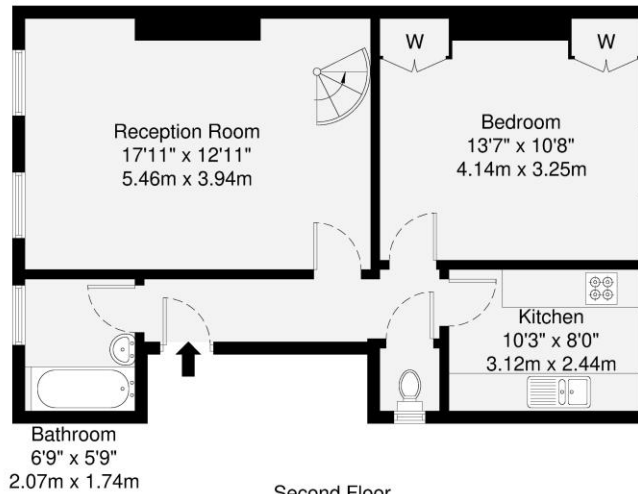
wandsworth@chestertons.co.uk

0208 104 7530

[chestertons.co.uk](http://chestertons.co.uk)



Mezzanine



Second Floor

GROSS INTERNAL AREA (GIA)  
The footprint of the property  
105.9 sq m / 1140 sq ft

TOTAL STORAGE SPACE  
Storage and wardrobe total area  
1.9 sq m / 20 sq ft

EXTERNAL FEATURES  
Garden, Balcony, Terrace, Verandah etc.  
0.0 sq m / 0.0 sq ft

RESTRICTED HEAD HEIGHT  
Limited use area under 1.5m  
0.0 sq m / 0.0 sq ft

Disclaimer: Floorplan measurements are approximate and are for illustrative purposes only. While we do not doubt the floorplan accuracy and completeness, you or your advisors should conduct a careful, independent investigation of the property in respect of monetary valuation.

Maison  
VUE

