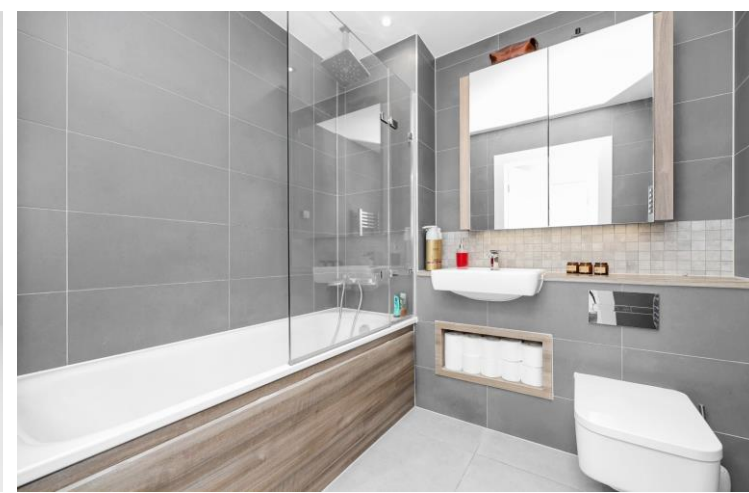




Courthouse Way
London, SW18

CHESTERTONS





The lovely bright and homely apartment consists of an open plan kitchen with a light and bright living area. Off the living area is a spacious but sheltered balcony with far reaching views. There is a good sized double bedroom with built in storage and a well appointed with three piece suite bathroom.

This apartment is set in the heart of Wandsworth town, moments from Southside shopping centre providing everyday essentials with a Waitrose supermarket, and it has a good range of useful high street stores, restaurants and a cinema. The area is heaven for foodies, with great cafés and restaurants spanning cuisine from Indian street food to hip barbecue joints and laid-back brunch spots.

King Georges Park is close by and Wandsworth Town (National Rail) is a 10 minute walk away and provides services to London Waterloo. Nearby East Putney (District line) station also provides services to Victoria and Bank.

- High quality modern apartment
- Spacious living accommodation
- 1 double bedroom
- Sunny sheltered balcony
- Central Wandsworth location

Asking Price £450,000

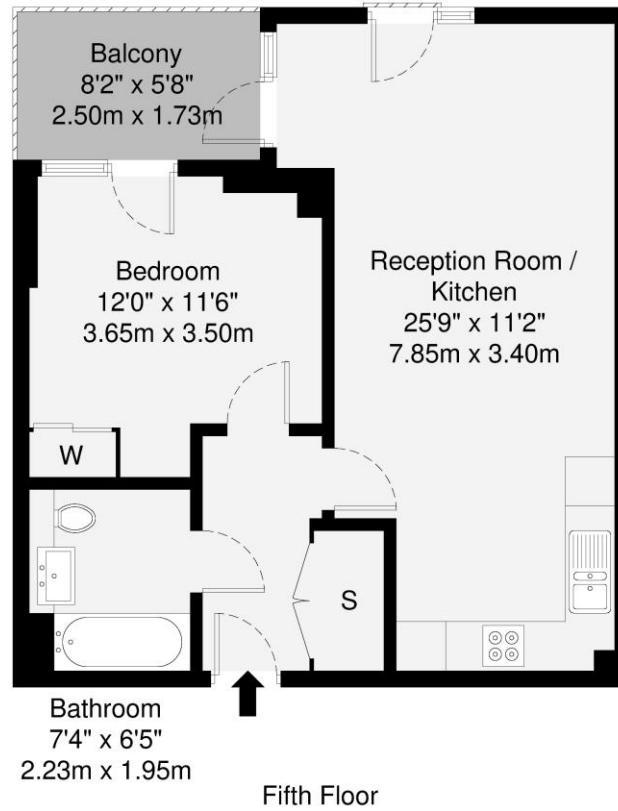
Score	Energy rating	Current	Potential
92+	A		
81-91	B	85 B	85 B
69-80	C		
55-68	D		
39-54	E		
21-38	F		
1-20	G		

Tenure: Leasehold 240 years remaining
Service Charge: £4250 per annum
Ground Rent: £350 per annum
Local Authority: London Borough of Wandsworth
Council Tax Band: D

Chestertons Wandsworth Sales

47 East Hill
 London
 SW18 2QE

wandsworth@chestertons.co.uk
 0208 104 7530
 chestertons.co.uk



GROSS INTERNAL AREA (GIA)
The footprint of the property
50 sq m / 538 sq ft

TOTAL STORAGE SPACE
Storage and wardrobe total area
2 sq m / 21 sq ft

EXTERNAL FEATURES
Garden, Balcony, Terrace, Verandah etc.
4.3 sq m / 46 sq ft

RESTRICTED HEAD HEIGHT
Limited use area under 1.5m
0.0 sq m / 0.0 sq ft

Disclaimer: Floorplan measurements are approximate and are for illustrative purposes only. While we do not doubt the floorplan accuracy and completeness, you or your advisors should conduct a careful, independent investigation of the property in respect of monetary valuation.

Maison
VUE

