



Cummings House
11 Chivers Passage, SW18





An immaculate apartment in the exclusive Ram Development.

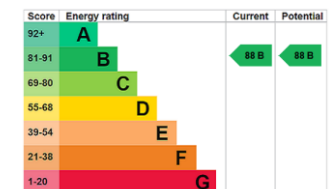
Built on the historic site of the former Youngs Brewery, located in the heart of Wandsworth and less than 10 minutes' walk to Old York Road and Wandsworth Town mainline station.

With sleek, high-quality finishes throughout, the property boasts a spacious and light-filled open-plan living area, perfect for both relaxing and entertaining. Upon entry you are welcomed into a generous hallway fitted with a large utility/ storage cupboard. The hardwood floors in the hallway flow into the large, open-plan kitchen/reception room which is flooded with light from the floor to ceiling glass doors and windows. The kitchen is fitted with a variety of high-quality, integrated Siemens appliances and provides ample cabinet storage.

The double bedroom has floor to ceiling windows letting natural light flood in as well as bespoke fitted wardrobes supplying plenty of storage space.

- Modern
- Concierge
- Chain free
- Wandsworth Town station 0.4 miles
- Southside Shopping centre a stone throw away

Asking Price £500,000



Tenure: Leasehold 991 years remaining

Service Charge: £4400 per annum

Ground Rent: £350 per annum

Local Authority: London Borough of Wandsworth

Council Tax Band: D

Chestertons Wandsworth Sales

47 East Hill

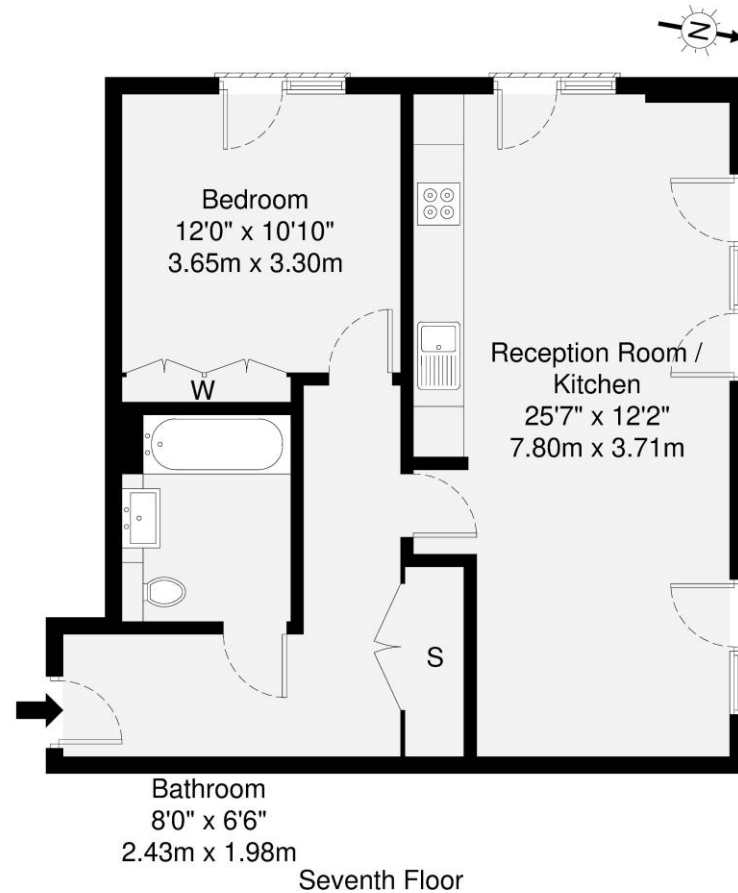
London

SW18 2QE

wandsworth@chestertons.co.uk

0208 104 7530

chestertons.co.uk



GROSS INTERNAL AREA (GIA)
The footprint of the property
57.5 sq m / 618 sq ft

TOTAL STORAGE SPACE
Storage and wardrobes total area
2.2 sq m / 23 sq ft

EXTERNAL FEATURES
Garden, Balcony, Terrace, Verandah etc.
0.0 sq m / 0.0 sq ft

RESTRICTED HEAD HEIGHT
Limited use area under 1.5m
0.0 sq m / 0.0 sq ft

Disclaimer : Floorplan measurements are approximate and are for illustrative purposes only. While we do not doubt the floorplan accuracy and completeness, you or your advisors should conduct a careful, independent investigation of the property in respect of monetary valuation.

Maison
VUE

