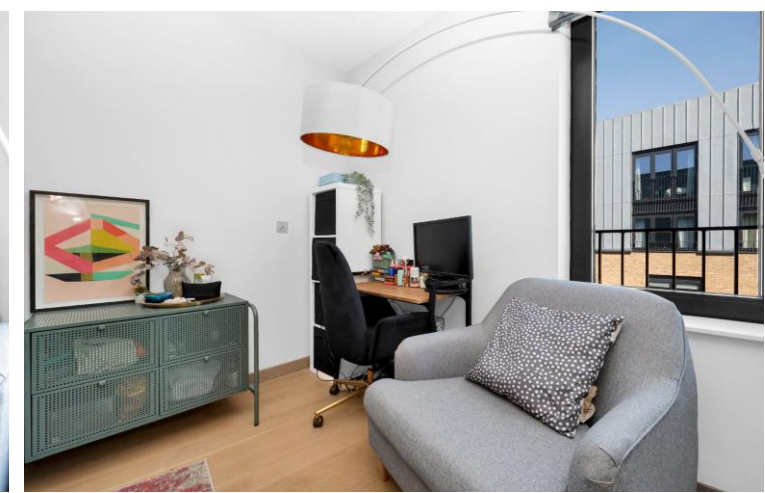




Cummings House
11 Chivers Passage, SW18





Lovely and bright studio apartment in a stunning, sought after development in Wandsworth with onsite Concierge for your convenience.

This apartment offers fantastic accommodation on the 6th floor and comprises a light and airy, open plan L shaped lounge/kitchen/living area boasting wood flooring, high specification fixtures and fittings, a separate modern shower room with a quality finish throughout.

This lovely property is very well located in the heart of Wandsworth, close to the mainline train stations providing access direct to Clapham Junction Waterloo and the City. Also on the doorstep are the cafes, restaurants and bars on Old York Road and redeveloped Southside Shopping Centre and cinema complex.

- Spacious Studio Apartment
- Ideal Pied-a-Terre
- Central Wandsworth location
- Modern finishes throughout
- Highly secure building with concierge
- Walking distance to Wandsworth Town Station

Asking Price £375,000

Score	Energy rating	Current	Potential
92+	A		
81-91	B	84 B	84 B
69-80	C		
55-68	D		
39-54	E		
21-38	F		
1-20	G		

Tenure: Leasehold 991 years remaining

Service Charge: £2750 per annum

Ground Rent: £300 per annum

Local Authority: London Borough of Wandsworth

Council Tax Band: C

Chestertons Wandsworth Sales

47 East Hill

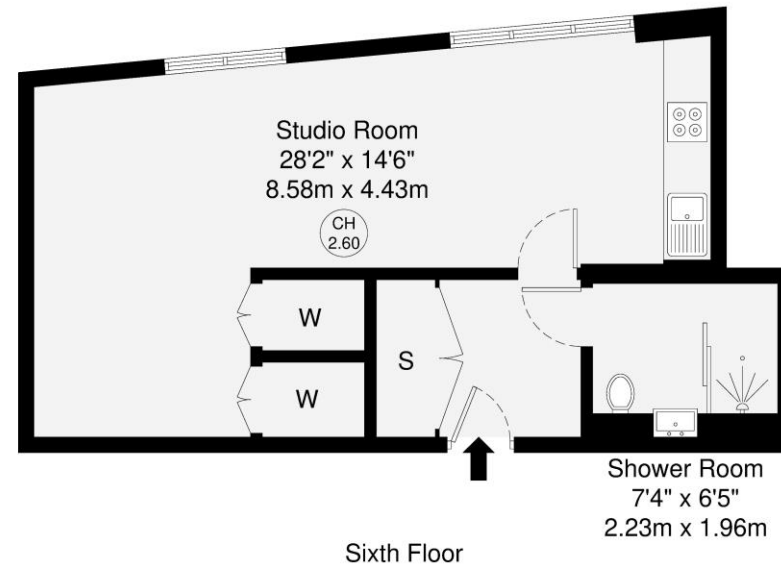
London

SW18 2QE

wandsworth@chestertons.co.uk

0208 104 7530

[chestertons.co.uk](https://www.chestertons.co.uk)



GROSS INTERNAL AREA (GIA)
The footprint of the property
43.3 sq m / 466 sq ft

TOTAL STORAGE SPACE
Storage and wardrobes total area
4.1 sq m / 44 sq ft

EXTERNAL FEATURES
Garden, Balcony, Terrace, Verandah etc.
0.0 sq m / 0.0 sq ft

RESTRICTED HEAD HEIGHT
Limited use area under 1.5m
0.0 sq m / 0.0 sq ft

Disclaimer : Floorplan measurements are approximate and are for illustrative purposes only. While we do not doubt the floorplan accuracy and completeness, you or your advisors should conduct a careful, independent investigation of the property in respect of monetary valuation.

Maison
VUE

