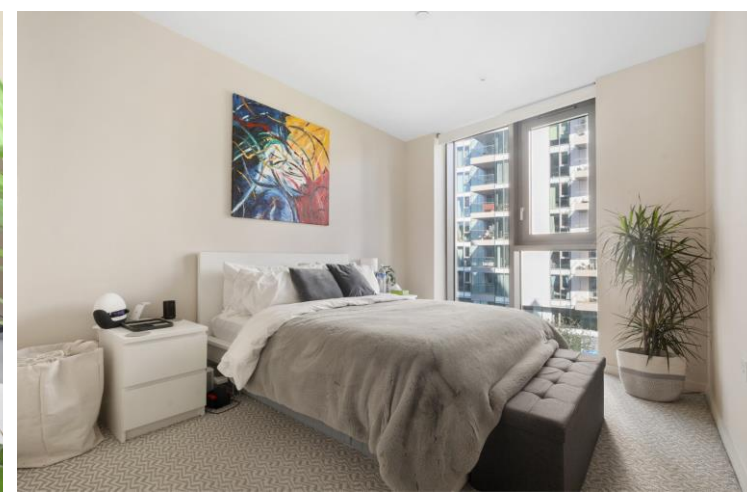




Eastfields Avenue
Wandsworth, SW18

CHESTERTONS





Pristine apartment in a modern development with private balcony offering direct views over the River Thames.

Eastfields Avenue benefits from onsite concierge service as well as private residents gym and swimming pool.

The apartment offers two double bedrooms and two bathrooms as well as a bright and airy open plan kitchen living area.

This ever popular development is located on the banks of the River Thames within a short walk of Wandsworth Park, Wandsworth Town Centre and Putney High Street.

Wandsworth Town Station (0.4 miles) provides regular overground services to London Waterloo and Clapham Junction, while East Putney Station and Putney Bridge Station are nearby (0.7 miles) which gives residents easy access to the City via the District Line.

- Third floor purpose built apartment
- Over 750 sq. ft.
- Two double bedrooms
- Two bathrooms
- Open Plan living space
- Private balcony with river views

Asking Price £630,000

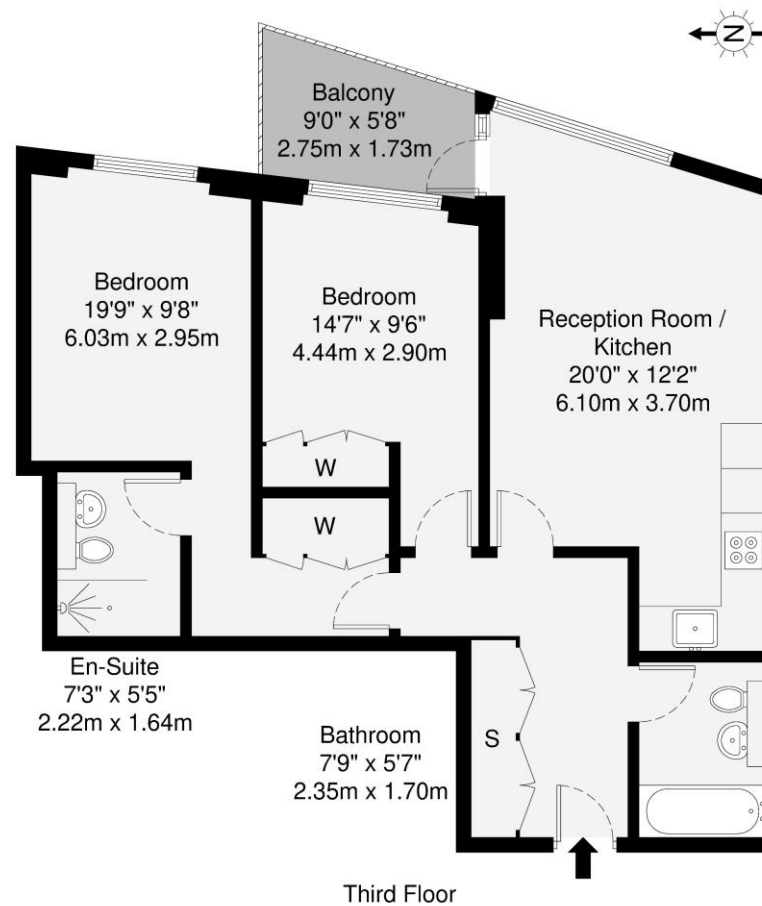
Energy Efficiency Rating		
Energy efficient - lower running costs	Current	Potential
92-100 A		
81-91 B		
69-80 C	77	77
55-68 D		
39-54 E		
21-38 F		
1-20 G		
Not energy efficient - higher running costs		
England, Scotland & Wales EU Directive 2002/91/EC		

Tenure: Leasehold 985 years
Service Charge: £6000 per annum
Ground Rent: £100 per annum
Local Authority: London Borough of Wandsworth
Council Tax Band: F

Chestertons Wandsworth Sales

47 East Hill
 London
 SW18 2QE

wandsworth@chestertons.co.uk
 0208 104 7530
chestertons.co.uk



GROSS INTERNAL AREA (GIA)
The footprint of the property
70.6 sq m / 759 sq ft

TOTAL STORAGE SPACE
Storage and wardrobes total area
3.8 sq m / 40 sq ft

EXTERNAL FEATURES
Garden, Balcony, Terrace, Verandah etc.
4.7 sq m / 50 sq ft

RESTRICTED HEAD HEIGHT
Limited use area under 1.5m
0.0 sq m / 0.0 sq ft

Disclaimer : Floorplan measurements are approximate and are for illustrative purposes only. While we do not doubt the floorplan accuracy and completeness, you or your advisors should conduct a careful, independent investigation of the property in respect of monetary valuation.

Maison
VUE

