



Anchor House
Smugglers Way, SW18

CHESTERTONS





A spacious two double bedroom, two bathroom apartment in this popular riverside development.

This modern accommodation comprises good size reception room with doors out to the large balcony which boasts river views, fully fitted kitchen, master bedroom with en-suite shower room, further double bedroom and bathroom.

The property further benefits from wooden floors and it is ideally located close to transport links to the city.

- Modern riverside apartment
- Two double bedrooms
- Two bathrooms
- Open plan reception room
- Balcony with river views
- Close to Wandsworth Town station

Asking Price £575,000

Energy Efficiency Rating		Current	Potential
90-100	A		
81-89	B		
72-80	C		
63-71	D		
54-62	E		
45-53	F		
35-44	G		
Not energy efficient - higher running costs			
England, Scotland & Wales		82	88
EU Directive 2002/91/EC			

Tenure: Leasehold 976 years
Service Charge: £4990 per annum
Ground Rent: £350 per annum
Local Authority: London Borough of Wandsworth
Council Tax Band: G

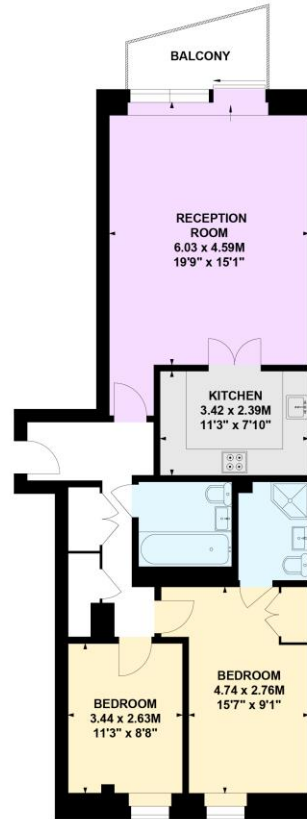
Chestertons Wandsworth Sales

47 East Hill
 Wandsworth
 London
 SW18 2QE
 wandsworth@chestertons.co.uk
 0208 104 7530

Anchor House, SW18

Approximate gross internal area
91 sq m / 979 sq ft

Key :
CH - Ceiling Height



Fourth Floor

Not to scale, for guidance only and must not be relied upon as a statement of fact.
All measurements and areas are approximate only

Chesterton UK Services Limited trading as Chestertons for themselves and for the vendor of this property whose agents they are, give notice that (i) these particulars do not constitute any part of an offer or contract, (ii) all statements contained within these particulars are made without responsibility on the part of Chestertons or the vendor, (iii) whilst made in good faith, none of the statements contained within these particulars are to be relied upon as a statement or representation of fact, (iv) any intending purchasers must satisfy themselves by inspection or otherwise as to the correctness of each of the statements contained within these particulars, (v) the vendor does not make or give either Chestertons or any person in their employment any authority to make or give representation or warranty whatsoever in relation to this property. Wide angle lenses may be used. ©Copyright Chestertons | Chesterton UK Services Limited | Registered Office 40 Connaught Street, Hyde Park, London W2 2AB Registered Company Number 05334580.



This paper is
100% recyclable