



Knightley Walk
Wandsworth, SW18

CHESTERTONS





- Outstanding first floor apartment
- Accommodation of 874 sq. ft.
- Two generous double bedrooms
- Two bathrooms
- Dedicated, secure underground parking bay
- Larger than average terrace and additional

Asking Price £625,000

Energy Efficiency Rating		Current	Potential
92-100	A		
81-91	B	86	86
69-80	C		
55-68	D		
39-54	E		
21-38	F		
1-20	G		

Not energy efficient - higher running costs

EU Directive 2002/91/EC

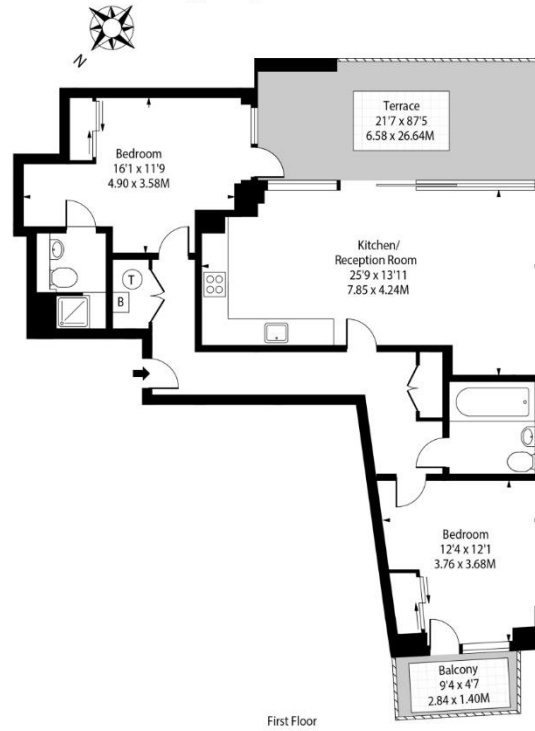
England, Scotland & Wales

Tenure: Share of Freehold 139 years 9 months
Service Charge: £2200
Ground Rent: £0
Local Authority: Wandsworth Council
Council Tax Band: F

Chestertons Wandsworth Sales

11 Huguenot Place
Wandsworth
London
SW18 2EN
wandsworth@chestertons.co.uk
0208 104 7530

Knightley Walk, SW18



Approx Gross Internal Area **874 Sq Ft - 81.20 Sq M**

Drawn in accordance with IPMS 3B: Residential

For Illustration Purposes Only - Not to Scale

Ref. No. 49743

