



Bronze Building

18 Buckhold Road, SW18

Asking Price £475,000

A large one bedroom modern apartment set in a popular newly built residential building in Wandsworth close to the town centre offering excellent transport links and local amenities.



Bronze Building

18 Buckhold Road, SW18

- ONE BEDROOM
- MODERN APARTMENT
- EXCELLENT LOCATION
- CLOSE TO LOCAL PARK
- SIXTH FLOOR



A delightful modern and large one bedroom apartment set in a popular residential building in Wandsworth that has recently been built. Offering excellent living space with underfloor heating, plenty of storage internal as well as external secure bike storage and also views towards Putney and Southfields with from the apartment or from the communal roof terrace located on the fourth floor.

The property is located on the sixth floor of the building and further benefits from having a concierge, secure entry system and easy access to the town centre which is moments away.

Wandsworth has a variety of local shops, entertainment venues, bars, restaurants and transport links making it one of South West London's most popular places to live.

Tenure: Leasehold 997 years 4 months

Service Charge: £2,644 reviewed yearly, paid twice yearly in January and July

Ground Rent: £450 paid annually, next reviewed in October 2030

Local Authority: Wandsworth

Council Tax Band: D

Energy Efficiency Rating		
	Current	Potential
Very energy efficient - lower running costs		
(94-100) A		
(81-91) B	83	83
(69-80) C		
(55-68) D		
(39-54) E		
(21-38) F		
(1-20) G		
Not energy efficient - higher running costs		
England, Scotland & Wales EU Directive 2002/91/EC		

Chestertons Wandsworth Sales

11 Huguenot Place

Wandsworth

London

SW18 2EN

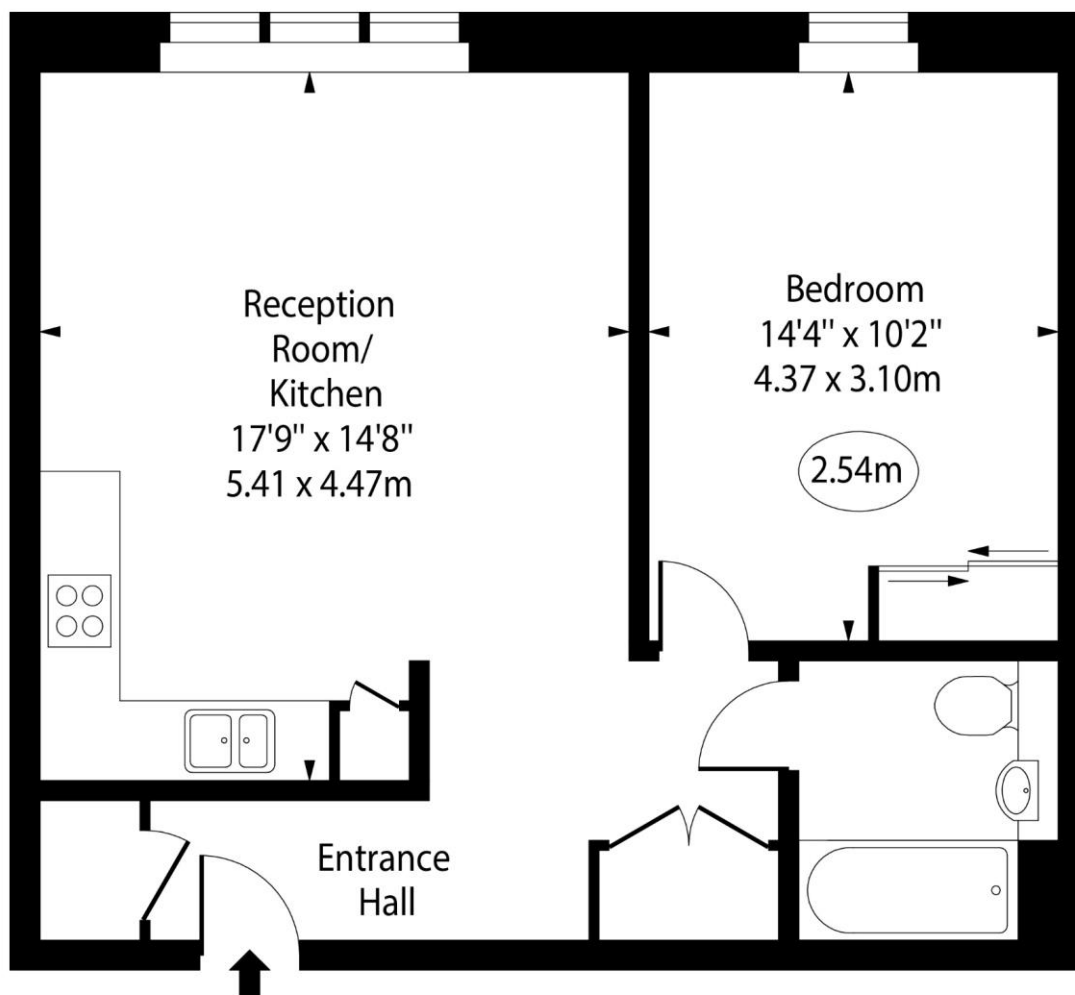
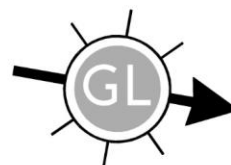
sales.wandsworth@chestertons.com

0208 104 7530

chestertons.com

Bronze Building, Buckhold Road, SW18

○ - Ceiling Height



Sixth Floor

Approx Gross Internal Area 554 Sq Ft - 51.47 Sq M

For Illustration Purposes Only - Not To Scale

www.goldlens.co.uk

Ref. No. 018622E

