



Palace Road, Brixton, SW2

3 bedroom flat for sale

£600,000

Leasehold

Property Details

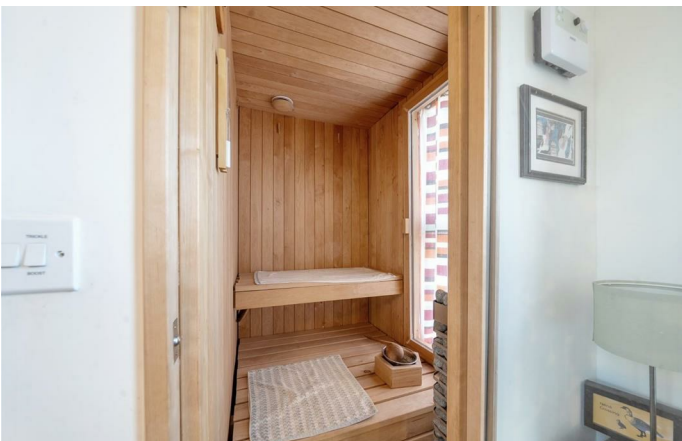
An exceptional three-bedroom, two-bathroom apartment with a private terrace, sauna, parking, and a shared garden, located in a charming, community-spirited development of just eleven homes. Boasting stunning views over a lush green expanse, this tranquil home offers an idyllic retreat while remaining well-connected. The property combines exceptional build quality with a smartly designed layout. Bright throughout the day, sunlight graces the principal bedroom in the mornings, transitioning to the open-plan reception and terrace in the afternoons and evenings. The heart of the home is the open-plan reception, featuring a contemporary kitchen with ample storage and dual-aspect windows flooding the space with natural light. Direct access to the private terrace creates a serene spot for al-fresco dining or soaking in the scenery. The principal bedroom boasts mirrored wardrobes, an en-suite, and a luxurious sauna. Two further bedrooms offer versatile spaces with green views. Additional perks include allocated parking, a shared garden, and a bike shed. The property was purchased as Shared Ownership by the current vendors, and will be staircased in with the sale so the new owner will be purchasing with full ownership.

Features

- Three double bedrooms
- Two bathrooms
- Private roof terrace
- Lush green views
- Sauna
- Allocated parking
- Neighbourly development of just eleven homes
- Streatham High Street a six-minute stroll
- Brixton, Clapham, Balham and Tulse Hill all within walking distance

Council tax band C

EPC rating B (85)



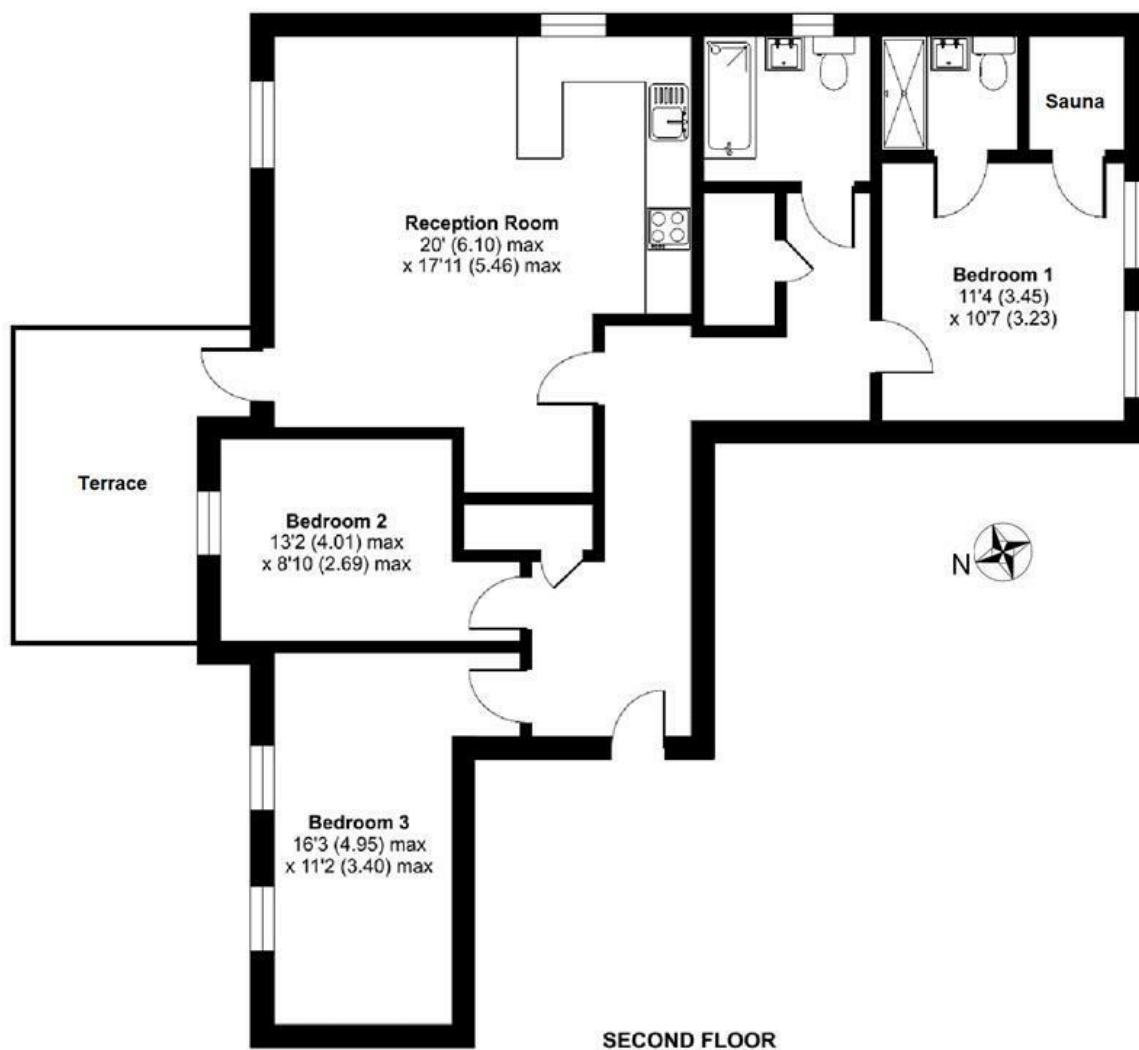


Palace Road, Brixton, SW2

Palace Road, SW2

3 Bedroom Flat

APPROXIMATE GROSS INTERNAL AREA: **987 SQ FT / 91.7 SQ M**



While we try our very best, floor plans are produced as a guide only and we take no responsibility for the precise accuracy with which any property is represented.

Palace Road, Brixton, SW2

