



Brixton Road, Brixton, SW9

2 bedroom flat - purpose built for sale

£450,000

Leasehold

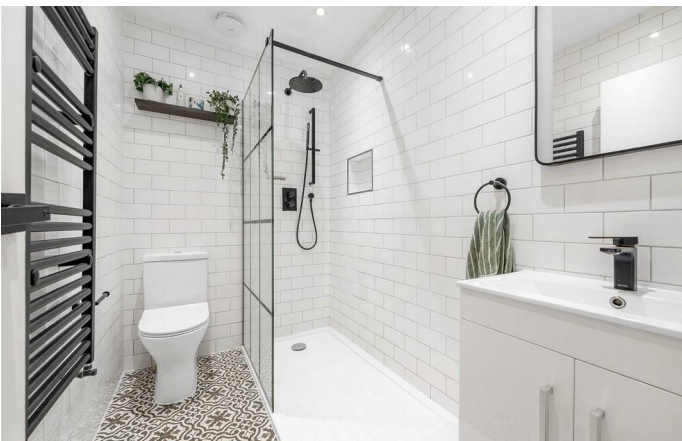
Property Details

A spacious two double bedroom apartment with access to a large shared roof terrace, set within an attractive period building on Brixton Road, in the heart of central Brixton. Benefitting from a predominantly Southerly aspect, the property is flooded with natural light, creating a bright and airy feel throughout. The generous open-plan kitchen and reception is the heart of the home, with a striking feature wall of stunning Crittall-style windows. The sleek kitchen offers white cabinetry, black gloss worktops, and a useful pantry cupboard, while secondary glazing and multiple lighting options enhance comfort and ambience. Both bedrooms are doubles with fitted wardrobes, positioned for privacy, with the principal enjoying elegant secondary glazed feature windows and the other peacefully set to the rear of the rear of the home with a lovely skylight. The bathroom is stylishly finished with a walk-in rain shower and black fixtures. A South-facing roof terrace, shared with only 4 other flats, provides a sunny spot for relaxing or entertaining. Further benefits include air conditioning throughout, Hive heating, and proactive management with a healthy reserve fund. Ideal for professionals, sharers, or investors alike.

Features

- Two double bedrooms
- Large shared roof terrace with South-facing aspect
- Bright and stylish home
- Over 675 square feet
- Air conditioning throughout
- 975 years remaining on the lease
- Central Brixton location
- Minutes from the Victoria line
- Walking distance to Northern line & Clapham High Street
- Chain-free

Council tax band C EPC rating C (73)



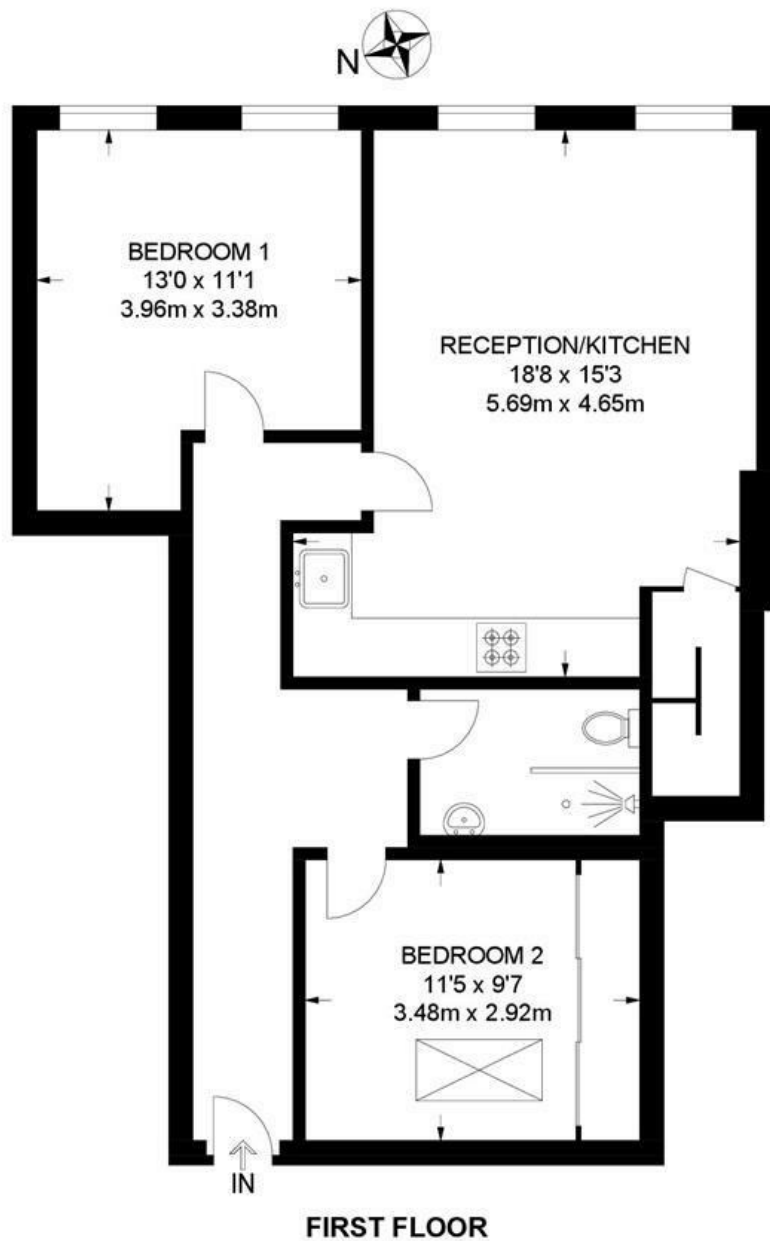


Brixton Road, Brixton, SW9

Brixton Road, SW9

2 Bedroom Flat

APPROXIMATE GROSS INTERNAL AREA: 682 SQ FT / 63.3 SQ M



While we try our very best, floor plans are produced as a guide only and we take no responsibility for the precise accuracy with which any property is represented.

Brixton Road, Brixton, SW9

