



## Walton Close, Stockwell, SW8

4 bedroom house for sale

**£785,000**

Freehold

### Property Details

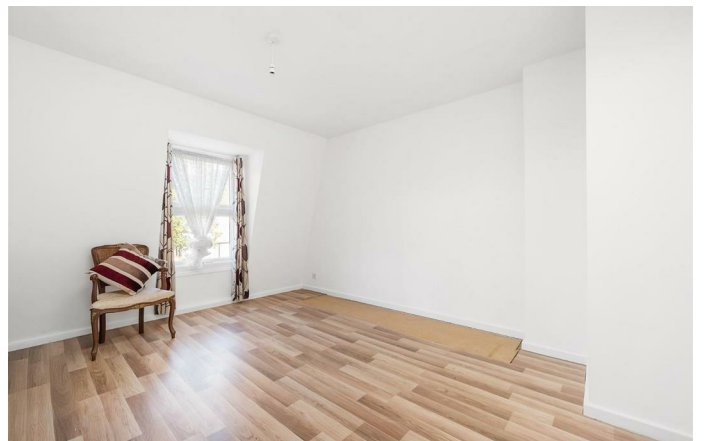
A bright and versatile four bedroom house with a private South-facing garden, arranged over three generous floors and spanning over 1,300 square feet. The heart of the home is the expansive kitchen diner, finished with sleek cabinetry, granite-style work surfaces and a substantial range cooker. Flooded with natural light, the space comfortably accommodates a dining table, with French doors opening directly to the South-facing garden. Paved for ease of maintenance and enjoying sun throughout the day in summer, the garden is perfect for al fresco dining, with a rear access gate adding convenience for bikes or prams. A substantial reception room sits on the second floor, over five metres in length and overlooking the garden – a wonderful spot for entertaining or relaxing. Four well-proportioned bedrooms are arranged throughout, including two generous doubles at the top of the house, served by a stylish marble-tiled bathroom. Additional bedrooms sit on the second and ground floors, each adjacent to a WC. This adaptable home offers excellent storage and a versatile layout.

### Features

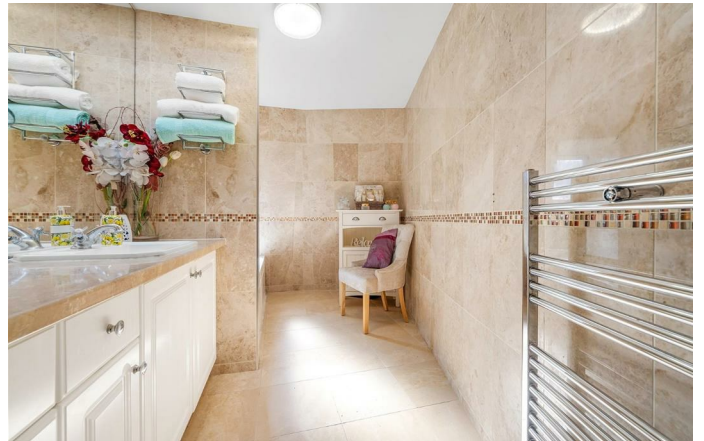
- Four bedrooms
- South-facing garden
- Freehold house
- Versatile layout
- Bathroom on every floor
- Convenient location between Nine Elms, Vauxhall, Stockwell and Oval
- Local amenities on the doorstep
- Northern Line a six-minute stroll
- Vauxhall Park a four-minute walk
- Chain-free

Council tax band D    EPC rating C (77)





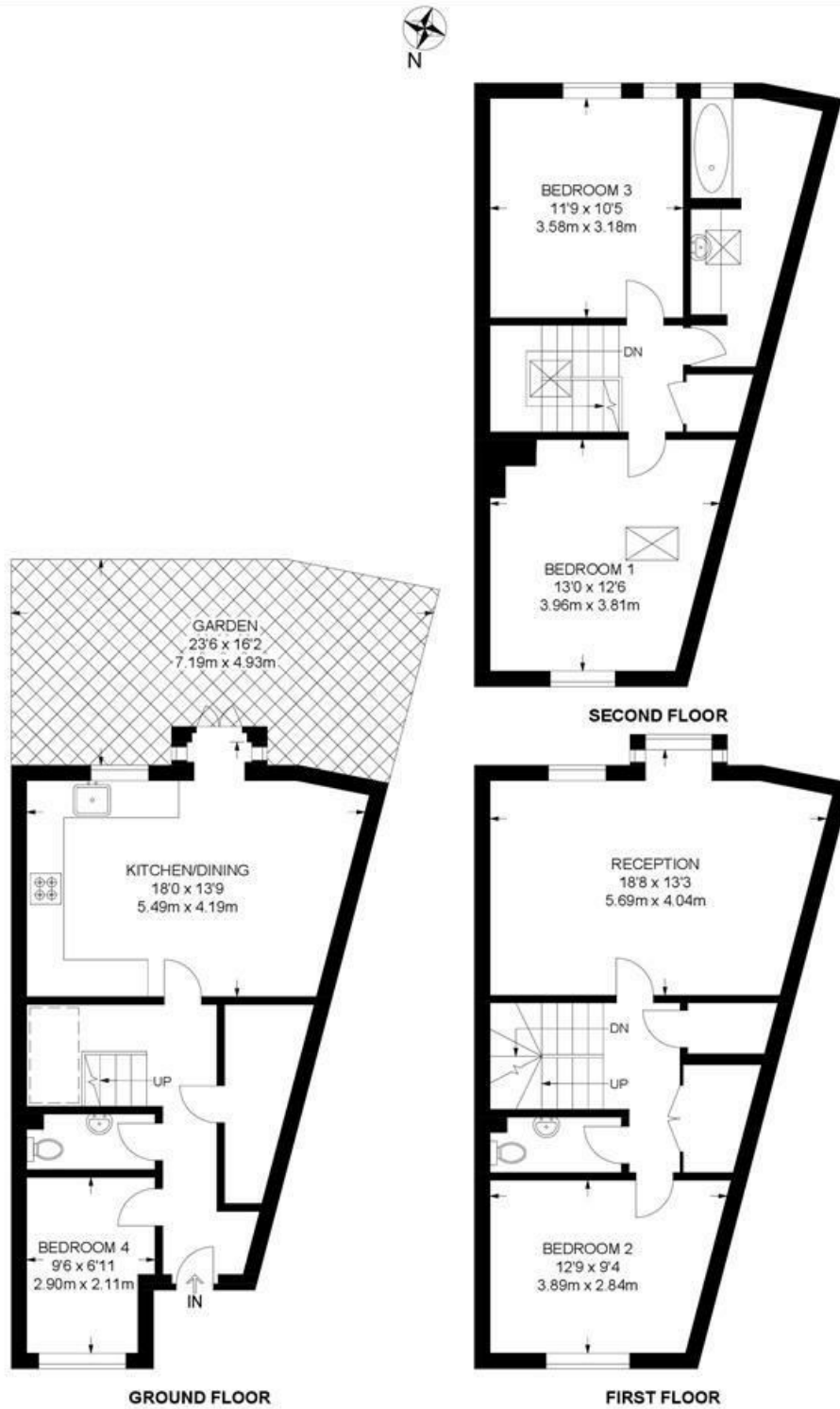




Walton Close, Stockwell, SW8

**Walton Close, SW8**  
**4 Bedroom House**

APPROXIMATE GROSS INTERNAL AREA: 1326 SQ FT / 123.2 SQ M



While we try our very best, floor plans are produced as a guide only and we take no responsibility for the precise accuracy with which any property is represented.



Walton Close, Stockwell, SW8

