



Crownstone Road, Brixton, SW2

2 bedroom flat - purpose built for sale

£389,950

Leasehold

Property Details

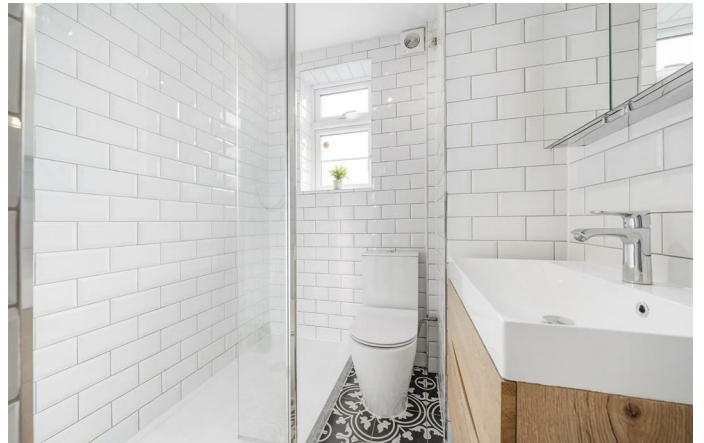
A bright two double bedroom apartment with shared gardens in an art deco building, quietly yet centrally located. Beautifully presented, the apartment has large double glazed windows, creating a warm and airy ambience enhanced by the positioning on the fourth floor, also ensuring additional privacy. The spacious reception is bathed in daylight through a large window, the ideal space in which to unwind or dine. The separate kitchen has sleek cabinetry and worktops wrapping maximising surface space, with the sink below the window this is a lovely spot in which to cook. Both bedrooms are doubles, set to opposing sides of the home for a desirable level of privacy. The principle bedroom has generous space for wardrobes, further storage and a dressing table or desk if required. The second bedroom also boasts modern wooden flooring, with a nook behind the door ideal for wardrobes. The bathroom is modern, with a large walk-in shower and storage for a clean finish. The large shared garden is a sunny spot with well-maintained lawns perfect for summer picnics. This quiet building has a lift and secure entry system.

Features

- Two double bedrooms
- Shared gardens
- Art deco residential building
- Lift access
- Modern glazed windows throughout
- Quietly yet centrally positioned
- Local amenities on the doorstep
- Brixton tube and Herne Hill station both a ten-minute walk
- Brockwell Park a two-minute stroll
- Chain-free

Council tax band B

EPC rating D (58)

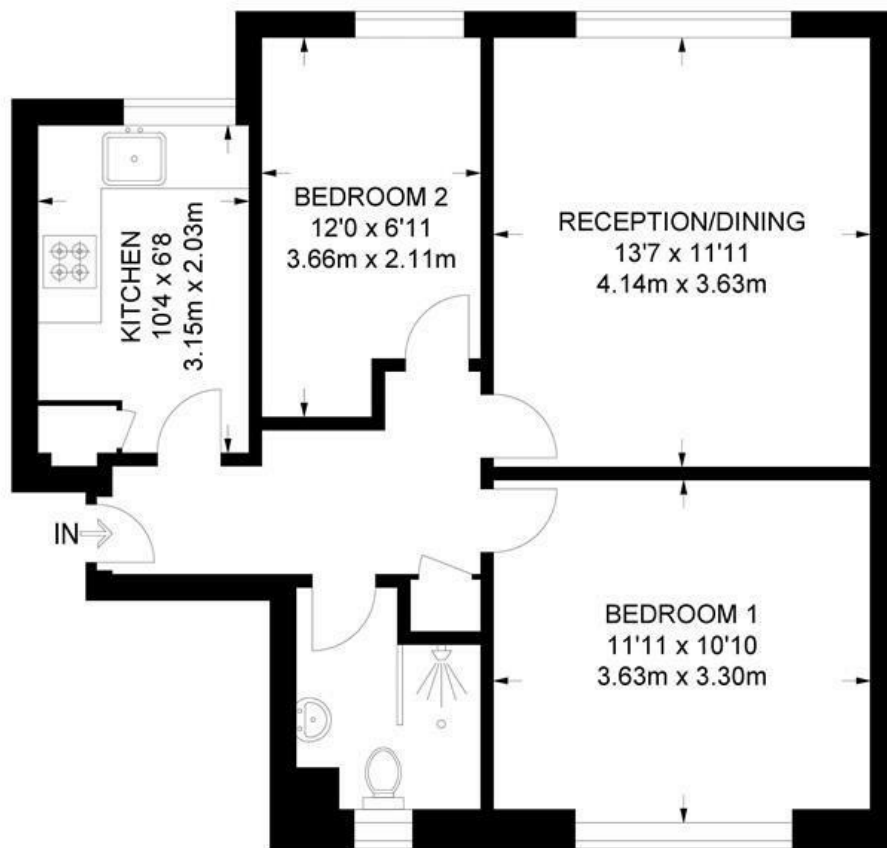


Crownstone Road, Brixton, SW2

Crownstone Court, SW2

2 Bedroom Flat

APPROXIMATE GROSS INTERNAL AREA: **575 SQ FT / 53.4 SQ M**



FOURTH FLOOR



While we try our very best, floor plans are produced as a guide only and we take no responsibility for the precise accuracy with which any property is represented.

Crownstone Road, Brixton, SW2

