

## Appleby Mews, Brixton Hill, Brixton, SW2

2 bedroom flat - purpose built for sale

**£695,000**

Share of Freehold

### Property Details

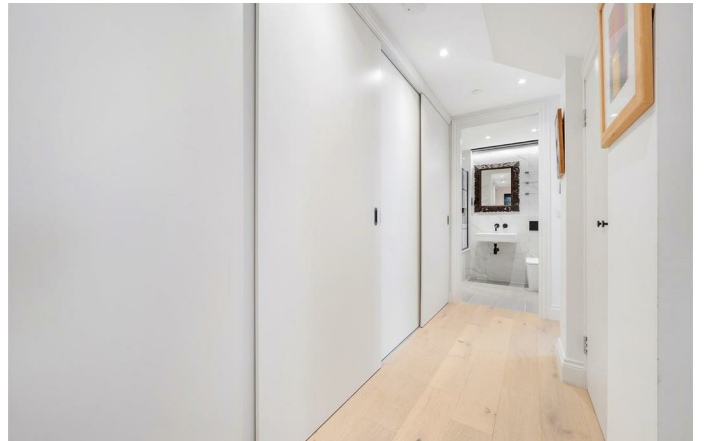
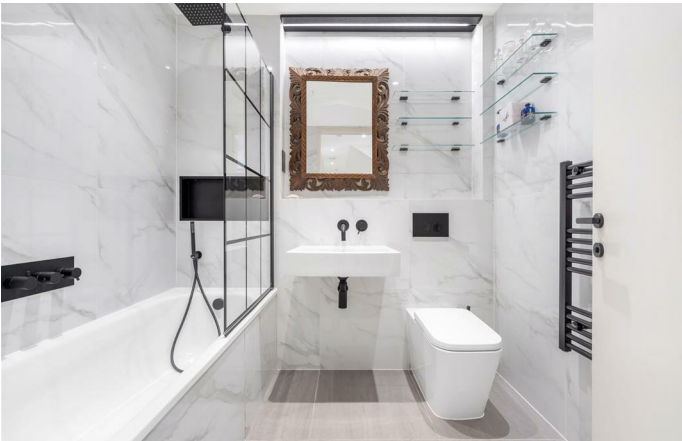
A luxurious and peaceful lateral home set within a private gated mews, this stunning ground floor apartment boasts over 1,000 square feet of beautifully finished space, two double bedrooms, two bathrooms, and a sun-drenched South-facing patio garden. With its own private entrance and leafy communal lawns to the front, the property enjoys an exceptional sense of tranquillity, enhanced by excellent insulation and considerate neighbours. An expansive open-plan reception room stretches nearly ten metres, ideal for entertaining and everyday living, with a high-spec integrated kitchen and large sliding doors opening onto the private garden. Both bedrooms are generous doubles with built-in storage, separated for privacy. The principal enjoys a sleek en-suite with walk-in rain shower, while the second bedroom also opens directly to the patio garden. A second bathroom features a double-ended tub with striking black fittings. An abundance of hallway storage ensures a tidy, well-organised home. Tucked away within a secure gated mews, the property enjoys a wonderful sense of seclusion and quietude, rarely found in such a central location.

Council tax band E      EPC rating B (84)

### Features

- Two double bedrooms
- Two bathrooms
- South-facing patio garden off reception and bedroom
- Own front door
- Private gated mews development
- Over 1,000 square feet
- Vast array of amenities on Brixton Hill and central Brixton
- Local park and supermarket on the doorstep
- Excellent transport links
- Share of freehold. Chain-free



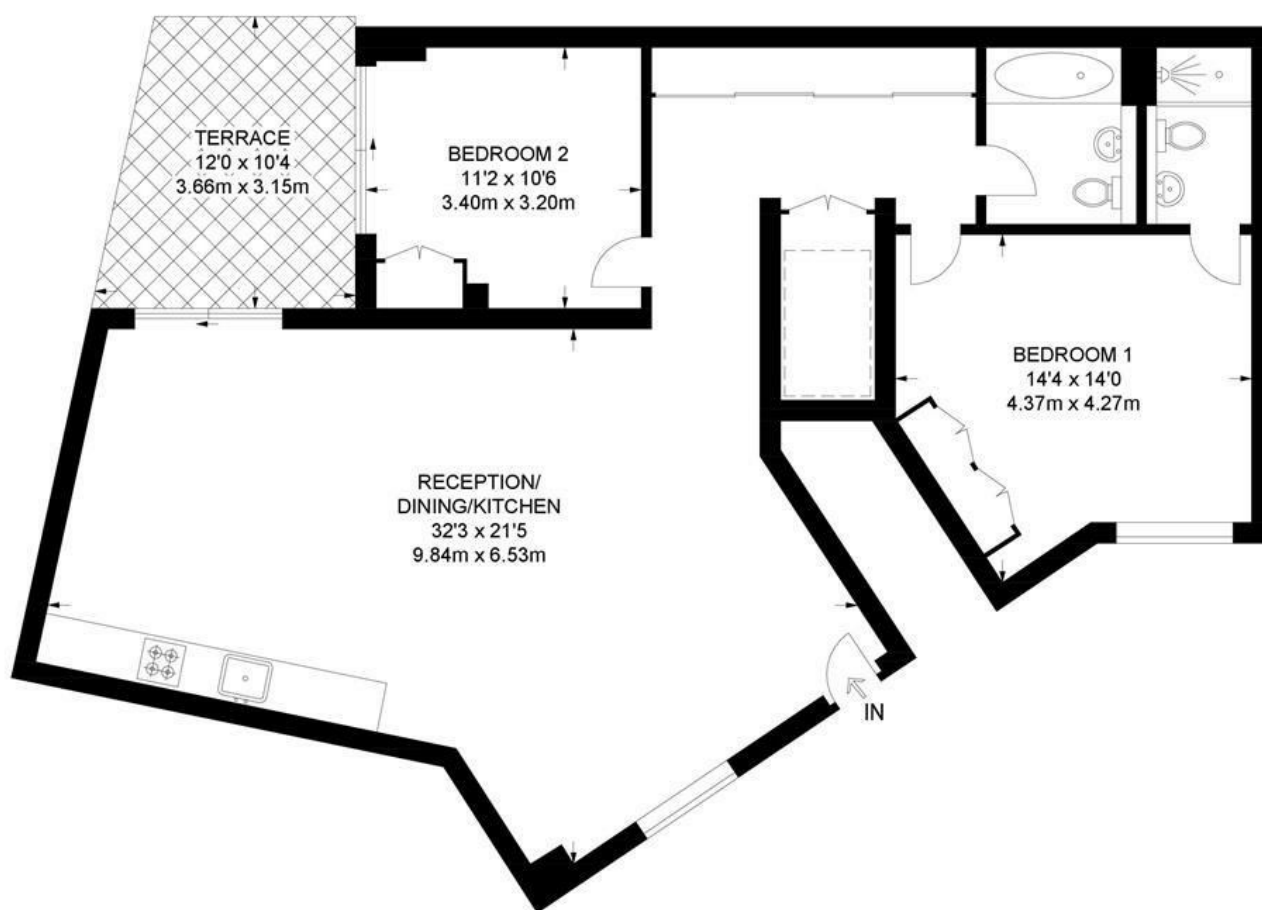


Appleby Mews, Brixton Hill, Brixton, SW2

## Appleby Mews, SW2

### 2 Bedroom Flat

APPROXIMATE GROSS INTERNAL AREA: **1035 SQ FT / 96.2 SQ M**



GROUND FLOOR



While we try our very best, floor plans are produced as a guide only and we take no responsibility for the precise accuracy with which any property is represented.

Appleby Mews, Brixton Hill, Brixton, SW2

