



**Half Moon Lane, Herne Hill, SE24**

2 bedroom flat to let

**£435 Per Week**

Furnished

## Property Details

A gorgeous and bright two double bedroom apartment-situated less than a 10 minute walk to Herne Hill station. This beautiful apartment comprises two rather spacious bedrooms, a bright and airy open plan reception room, a modern kitchen and a family bathroom. Living here , you are located equidistant to both Herne Hill and North Dulwich overground stations. The location is fantastic with Dulwich Village, Brockwell Park, Herne Hill and East Dulwich all on your doorstep. Slightly further afield you can venture into Brixton or Peckham Rye for the eclectic and trend-setting night life on offer, not to mention Brockwell Park which is nearby.

## Features

- Two double bedrooms
- Family bathroom
- Open plan reception and kitchen
- Bright and airy throughout
- Less than a 10 minute walk to Herne Hill station
- Around a 12 minute walk to Brockwell park

Council tax band C      EPC rating C (71)





Half Moon Lane, Herne Hill, SE24

**K**

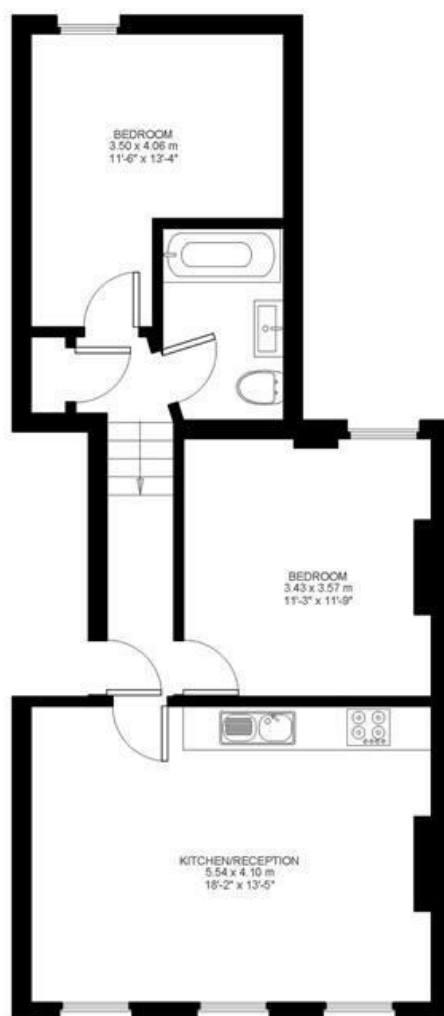
2 Bed flat

Approx internal area:

**637 sqft 59 sqm**

While we do try our very best, floor plans are produced as a guide only and we take no responsibility for the precise accuracy with which any property is represented

Half Moon Lane



First Floor





Half Moon Lane, Herne Hill, SE24

