



Lambert Road, Brixton, SW2

2 bedroom flat - purpose built for sale

£475,000

Leasehold

Property Details

A wonderful two double bedroom apartment with a full-width step-out balcony and a private entrance, set on the top floor of a well-maintained purpose-built development in a tucked-away position. Flooded with natural light thanks to its predominantly South-facing aspect, this bright and uplifting home enjoys an elevated, private outlook. Neutrally decorated throughout, the property offers a welcoming blank canvas, ideal for personal touches. The heart of the home is the spacious open-plan reception, with engineered wooden flooring, modern downlighting, and full-height windows that slide open to the balcony. A sleek gloss kitchen with integrated appliances and a breakfast bar completes the space, perfect for entertaining or relaxed daily living. The principal bedroom mirrors the light-filled feel, with balcony access, fitted wardrobes, and plush carpeting. A second true double bedroom, also with wardrobes, offers versatility for guests or working from home. The stylish bathroom features a full-sized bath with overhead shower, and further storage is available in the hallway. A fantastic home close to Brockwell Park, with excellent transport links nearby.

Features

- Two double bedrooms
- Full-width step-out balcony
- Purpose built development
- Own front door
- Bright, predominately South-facing aspect
- Central Brixton a ten-minute stroll
- Brockwell Park nearby
- Clapham and Abbeville Village a twenty-minute walk
- Victoria and Northern lines
- Chain-free

Council tax band D

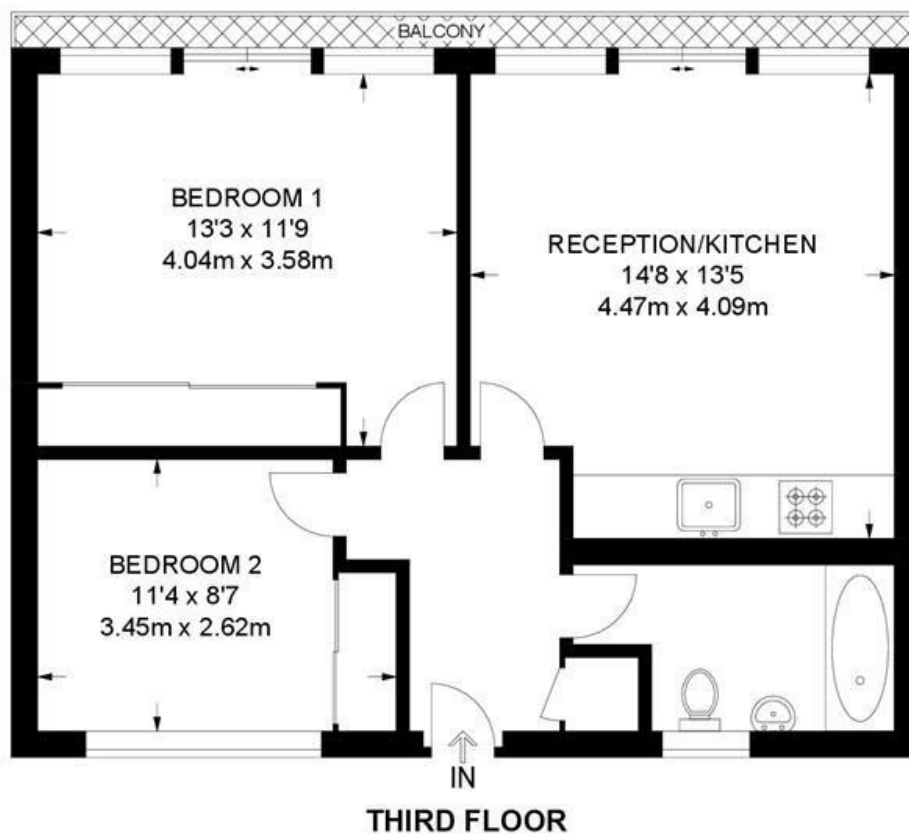
EPC rating C (79)



Lambert Road, Brixton, SW2

Lambert Road, SW2
2 Bedroom Flat

APPROXIMATE GROSS INTERNAL AREA: **562 SQ FT / 52.2 SQ M**



While we try our very best, floor plans are produced as a guide only and we take no responsibility for the precise accuracy with which any property is represented.

Lambert Road, Brixton, SW2

