



Coldharbour Lane, SE5

1 bedroom flat to let

£370 Per Week

Part furnished

Property Details

Presenting this lovely one bedroom flat situated walking distance from both Brixton Station and Denmark Hill. This flat comprises a fantastic sized reception area which is flooded by natural light, a sleek modern bathroom and a comfortable double bedroom and separate kitchen which is tucked away quietly at the rear of the property. A variety of restaurants and nightlife will be right on your doorstep, including the ever popular Brixton Village, and access into the city is easy with Brixton station close by, Loughborough Junction and Denmark Hill stations are all within easy reach as is Kings College Hospital.

Features

- One double bedroom
- Spacious reception
- Bright and airy
- Modern
- Newly decorated
- Close to transport links
- Close to Kings College Hospital

Council tax band B EPC rating C (71)



Coldharbour Lane, SE5



1 Bed Flat

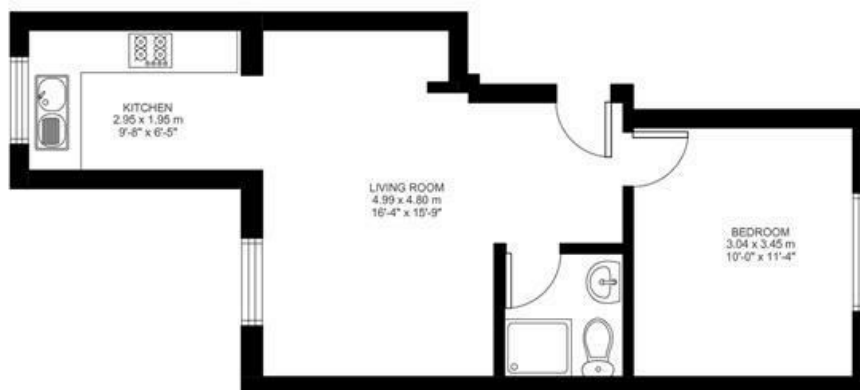
Approx internal area:

424 sqft 39 sqm

While we do try our very best, floor plans are produced as a guide only and we take no responsibility for the precise accuracy with which any property is represented

Coldharbour Lane

Upper Ground Floor



Coldharbour Lane, SE5

