



**Josephine Avenue, Brixton, SW2**

2 bedroom flat for sale

**£799,950**

Share of Freehold

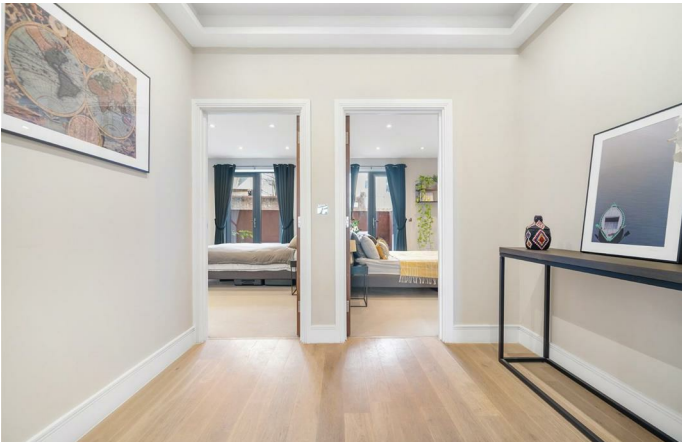
## Property Details

An exceptional two double-bedroom, two-bathroom apartment with an additional WC, private courtyard garden, and off-street parking within a secure, gated development. Nestled on the sought-after Josephine Avenue, a picturesque, tree-lined street, this unique home offers an impressive 1,400 square feet of stylish living space. Entering via the private entrance, a spacious hallway leads to a striking open-plan living area, extending over eleven meters—perfect for both entertaining and everyday living. Engineered wooden flooring enhances the seamless flow, while a sleek kitchen features contemporary cabinetry, integrated appliances, and a stunning waterfall-edge peninsula with a breakfast bar. Both bedrooms are generously sized, set away from social spaces for privacy, and boast floor-to-ceiling windows opening onto the courtyard. Each has plush carpets and an en-suite—one with a bathtub and overhead shower, the other with a double-ended bathtub and walk-in rain shower offering a luxurious home-spa experience. The low-maintenance private courtyard garden is ideal for al fresco dining. Completing this exclusive home is off-street parking and a friendly, gated community.

Council tax band E    EPC rating B (83)

## Features

- Two double bedrooms
- Two bathrooms plus WC
- Private courtyard garden
- Contemporary gated building with off-street parking
- Over 1,400 square feet
- Private entrance
- Cafes, gym and eateries on the doorstep
- Brixton Village and tube station within a ten-minute walk
- Herne Hill a pleasant walk through Brockwell Park
- Share of freehold





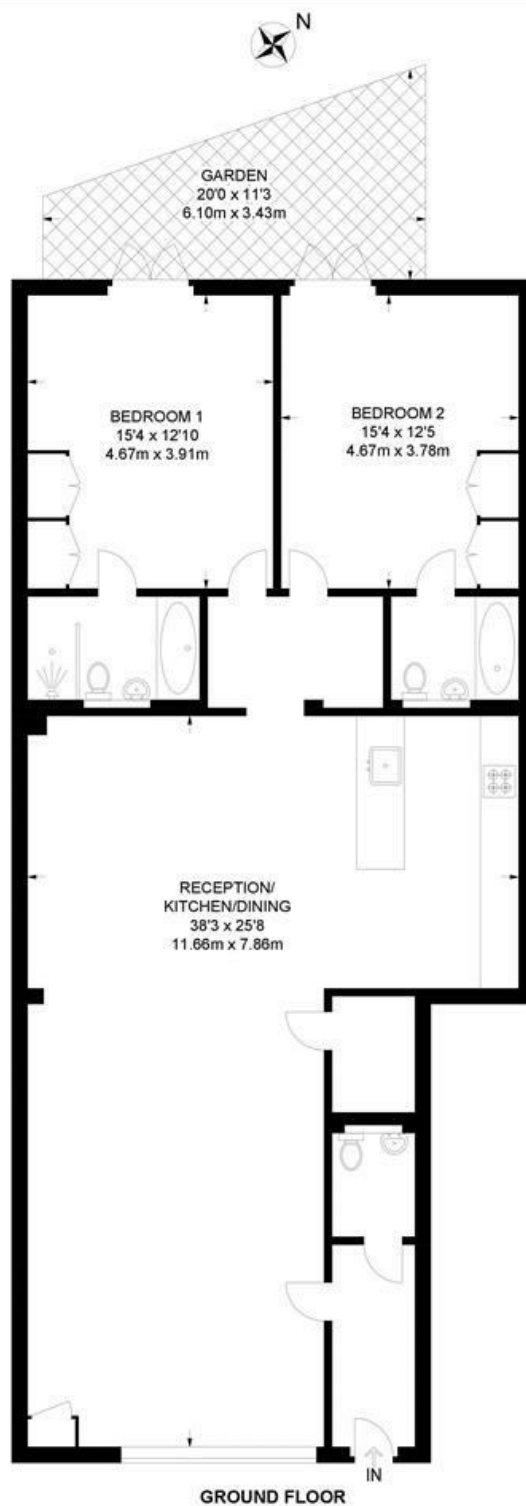


Josephine Avenue, Brixton, SW2

**Josephine Avenue, SW2**

**2 Bedroom Flat**

APPROXIMATE GROSS INTERNAL AREA: **1416 SQ FT / 131.6 SQ M**



While we try our very best, floor plans are produced as a guide only and we take no responsibility for the precise accuracy with which any property is represented.

Josephine Avenue, Brixton, SW2

