



## Milkwood Road, Herne Hill, SE24

2 bedroom flat - conversion for sale

£550,000

Leasehold

### Property Details

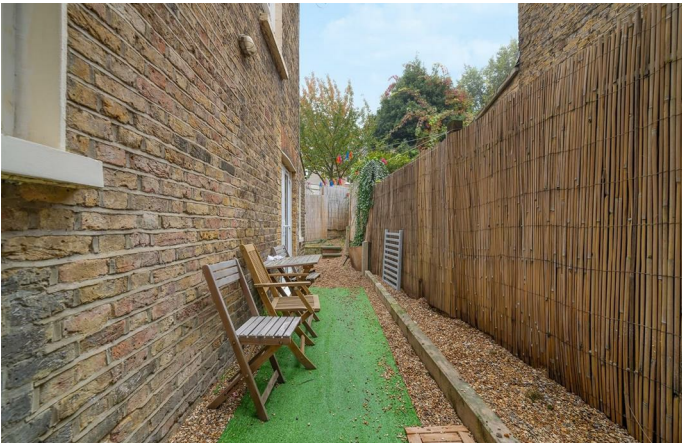
A great example of a two double-bedroom Victorian garden flat, located on this popular street in Herne Hill. Milkwood Road is perfectly positioned within walking distance to Herne Hill, Dulwich, Brixton and Loughborough Junction. Completely renovated two years to a high standard, the flat offers a fantastic layout and stylish fixtures and fittings throughout. The two spacious double bedrooms are nestled quietly at the rear of the building with fresh air and natural light streaming in through the glass doors. The apartment offers great storage throughout, with multiple built-in cupboards within the central hallway. The open-plan reception at the front of the property has a contemporary kitchen with quartz worktops and a convenient breakfast bar, offering an informal dining option. The bathroom is ideally located between the two bedrooms and is as tastefully finished as the rest of the property. Last but not least, the private rear garden is low-maintenance, secluded and has side access, perfect for savouring the warmer months of the year.

### Features

- Two double bedrooms
- Victorian conversion
- Bright and airy throughout
- Over 650 square feet of internal living space
- Private garden with side access
- Popular location a five minute walk to Herne Hill Station
- A short stroll to Brockwell Park
- Chain-free

Council tax band      EPC rating D (67)





Milkwood Road, Herne Hill, SE24

Milkwood Road, SE24

2 Bedroom Flat

APPROXIMATE GROSS INTERNAL AREA: 664 SQ FT / 62 SQ M



GROUND FLOOR



While we try our very best, floor plans are produced as a guide only and we take no responsibility for the precise accuracy with which any property is represented.



Milkwood Road, Herne Hill, SE24

