

Jebb Avenue, SW2

3 bedroom flat to let

£623 Per Week

Furnished

Property Details

A spacious three double bedroom property on Jebb Avenue is situated quietly just off Brixton Hill, perfectly located for anyone wanting to be close to the action yet far enough away to retain a sense of calm. Brixton town centre and Brixton Village are a stroll down Brixton Hill or a five-seven minute bus ride. Brockwell Park is approximately a ten-minute walk, which many local residents champion as one of London's best parks, across which is Herne Hill station within a fifteen-minute walk. Brixton Hill is a stone's throw, with its brilliant array of cafes, pubs and restaurants, such as F Mondays, Pizza Brixton, and the White Horse pub, to name a few. Living here you will benefit from all that Brixton offers, from the celebrated cuisine in POP Brixton to the music venues and nightlife the area is famous for and first stop on the Victoria Line at Brixton tube station.

The flat comprises a spacious separate living room which is flooded with natural light through large windows. The kitchen is modern which has ample storage and all you need in terms of mod cons. All three double bedrooms are all spacious and similar in size, making this property perfect for professional sharers and a modern bathroom which completes the property.

Features

- Three double bedrooms
- Separate Reception
- Neutral décor throughout
- Spacious
- Close to central Brixton
- Close to transport links
- Short walk to Brockwell Park

Council tax band C EPC rating B (83)



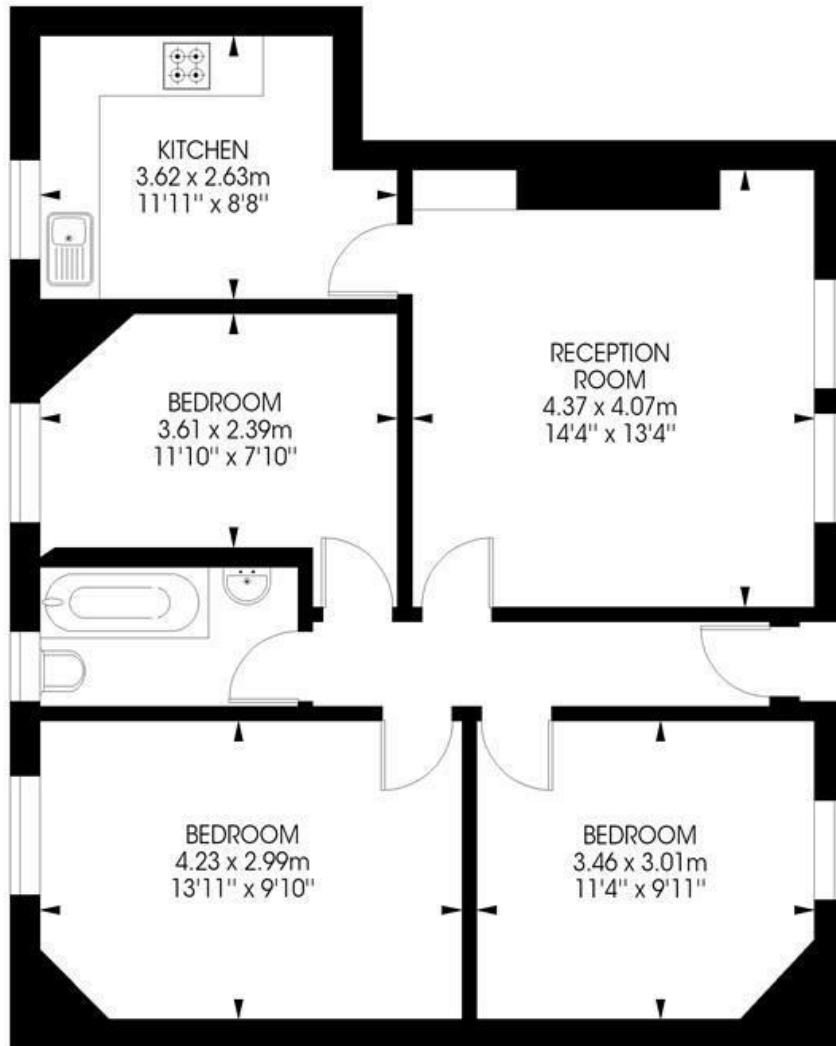
Jebb Avenue, SW2

Jebb Avenue, SW2

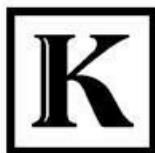
3 bedroom flat

Approximate internal area:

755 sqft / 70.14 sqm



First Floor



While we try our very best, floor plans are produced as a guide only and we take no responsibility for the precise accuracy with which any property is represented.

Jebb Avenue, SW2

