



**Shakespeare Road, SE24**

4 bedroom house to let

**£945 Per Week**

Part furnished

## Property Details

A stunning & unique four bedroom house with beautiful modern features throughout and a private garden, situated in the nest between Brixton and Herne Hill. This charming home will appeal to a wide range of tenants, and would be perfect for professional sharers or a family wanting a gorgeous, quiet space near to the hubbub of central Brixton. On the ground floor you will find a spacious double aspect living room which seamlessly leads through to a large and characterful extended kitchen. Through the kitchen's bi-fold doors you find yourself in the beautiful, quiet and tranquil garden providing a sunny escape in the summer months and rare for a house this size in this location. Downstairs you will also find a practically placed W/C and utility room. Upstairs on the first and second floors, you will find four good sized bedrooms and a main family bathroom and extra storage. Living here you will be on the doorstep of the hustle and bustle of Brixton town centre, with the famous markets. Pop Brixton, boutique shops and restaurant, as well as a short walk to Herne Hill's local independent boutiques, greengrocers, bakeries and gorgeous Brockwell Park.

Council tax band E      EPC rating E (51)

## Features

- Four Bedrooms
- Private Garden
- Victorian House
- Light and Airy
- Part Furnished
- Close to Brockwell Park
- Good Transport Links
- HMO



Shakespeare Road, SE24

**K**

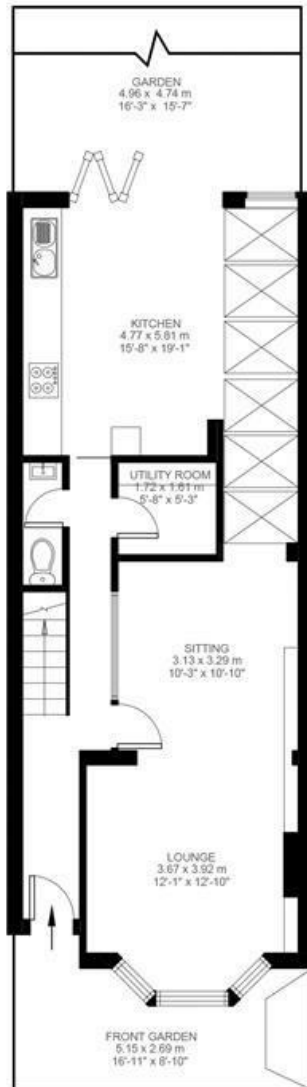
4 Bedroom House

Approx internal area:

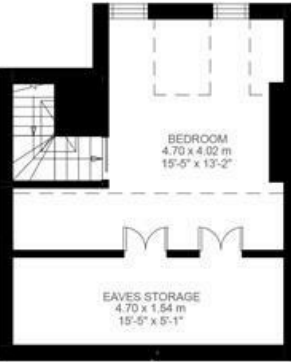
**1435 sqft 133 sqm**

(EXCLUDING EAVES STORAGE)  
EAVES STORAGE 7.24 SQ.M / 78 SQ.FT  
INCLUSIVE TOTAL AREA 140.24 SQ.M / 1510 SQ.FT

While we do try our very best, floor plans are produced as a guide only and we take no responsibility for the precise accuracy with which any property is represented



Ground Floor



Second Floor



First Floor



Shakespeare Road, SE24

