

**Beechdale Road, Brixton, SW2**

2 bedroom flat to let

**£425 Per Week**

Furnished

## Property Details

Beautiful, sleek and spacious two bedroom flat on the first floor of a lovely Victorian house - situated around an eighteen minute walk from Brixton Station. The property comprises an open plan kitchen/ reception, a modern and contemporary family bathroom and two good sized double bedrooms. Beechdale Road is a quiet residential street close to Brockwell Park around a nine minute walk away along with a plethora of coffee shops, pubs, restaurants and fantastic nightlife.

## Features

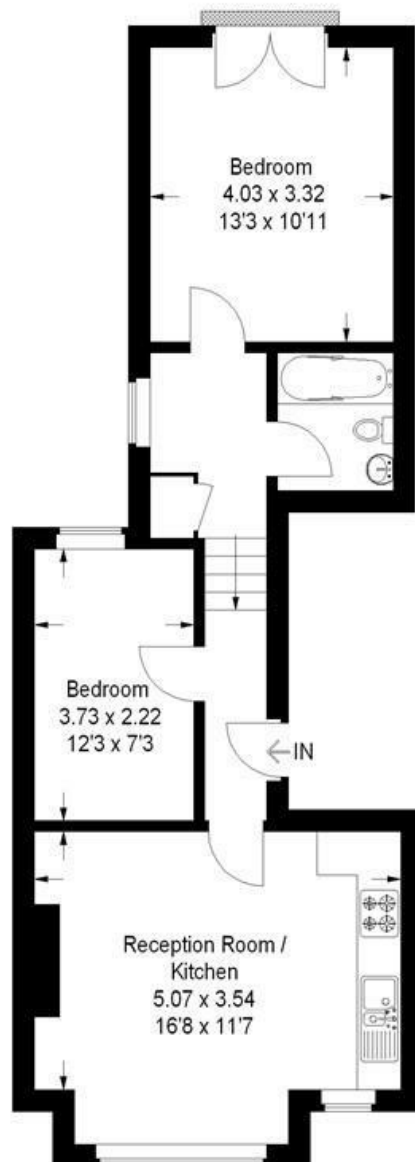
- 2 Double bedrooms
- Victorian conversion
- Bright and airy
- Close to Travel links
- Furnished
- Around a nine minute walk to Brockwell Park
- Spacious

Council tax band C    EPC rating C (73)



## Beechdale Road, SW2

Approximate Gross Internal Area  
54.8 sq m / 590 sq ft



### First Floor

This plan is for layout guidance only. Not drawn to scale unless stated. Windows and door openings are approximate. Whilst every care is taken in the preparation of this plan, please check all dimensions, shapes and compass bearings before making any decisions reliant upon them. (ID159213)



Beechdale Road, Brixton, SW2

