



## Coldharbour Lane, Brixton, SE5

3 bedroom flat - conversion to let

£600 Per Week

Furnished

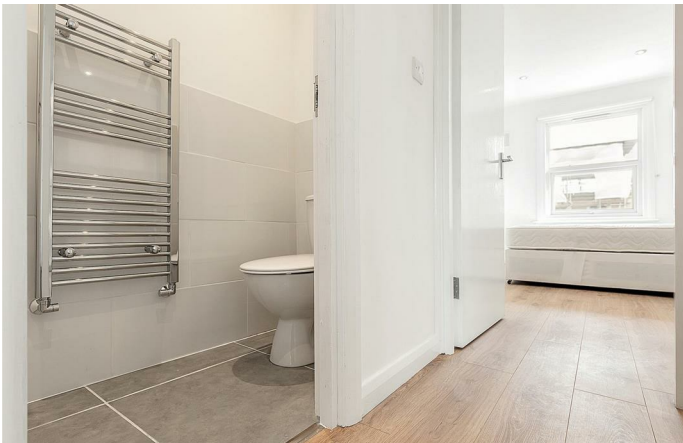
### Property Details

A Striking , split level three bedroom flat - situated within walking distance of all the amazing amenities Brixton has to offer. This beautiful, three double bedroom flat has been finished to the highest of standards and consists of a bright and spacious reception room, a separate sleek eat-in kitchen, three double bedrooms, a modern family bathroom a separate WC. The property is located just a short walk away from central Brixton , which boasts the delights of Brixton market, pop Brixton, all of the high-street shops and a variety of bars and restaurants to choose from. Brixton underground is also nearby and gives you access to the Victoria line straight into the city.

Council tax band D      EPC rating C (79)

### Features

- Three double bedrooms
- Modern family bathroom and WC
- Reception and separate eat-in kitchen
- Split level
- Bright and airy throughout
- Close to transport links





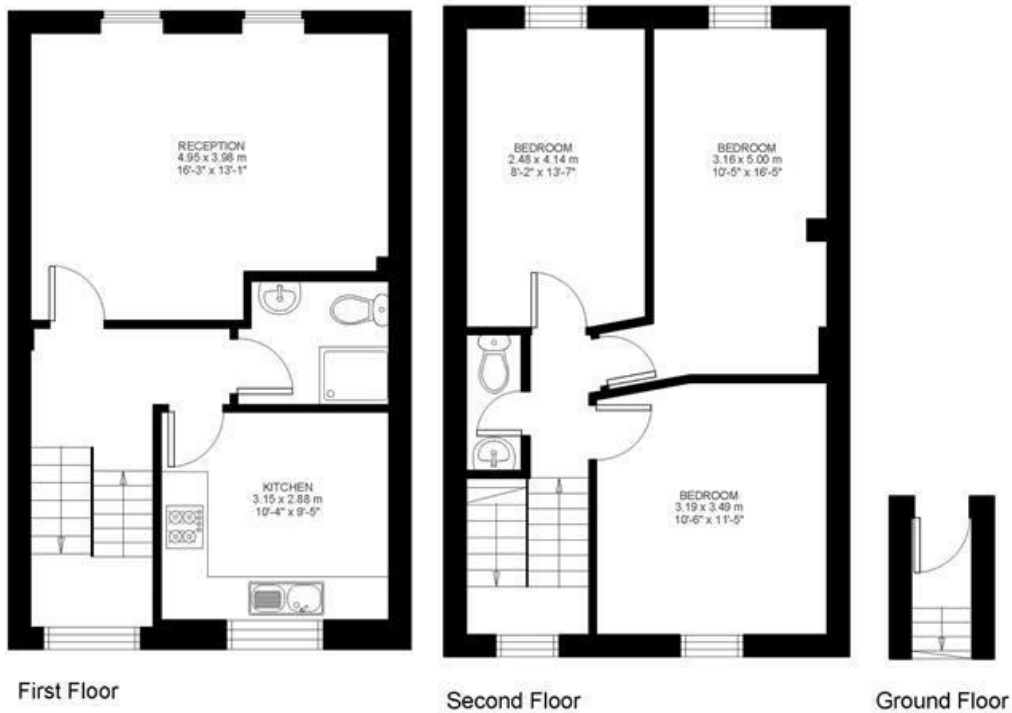
## Coldharbour Lane

### 3 Bed Flat

Approx internal area:

**914 sqft 85 sqm**

While we do try our very best, floor plans are produced as a guide only and we take no responsibility for the precise accuracy with which any property is represented



Coldharbour Lane, Brixton, SE5

