

**Lyham Road, Clapham, SW2**

1 bedroom flat to let

**£380 Per Week**

Furnished

## Property Details

This well presented one double bedroom top floor split level Victorian conversion flat located within walking distance of both Clapham and Brixton. The flat comprises of a double bedroom that has been tastefully decorated. The bathroom, also on the first level is modern and excellently appointed. Stairs take you to a mezzanine type-level containing a good-sized open plan living space with a dining area and a really lovely kitchen and fitted with all the mon cons. The flat is within walking distance to Both Clapham and Brixton tube stations given you access to both the Victoria and Northern Lines.

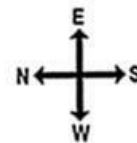
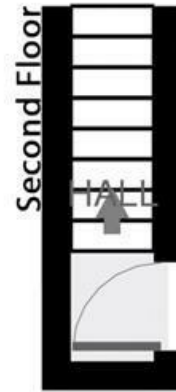
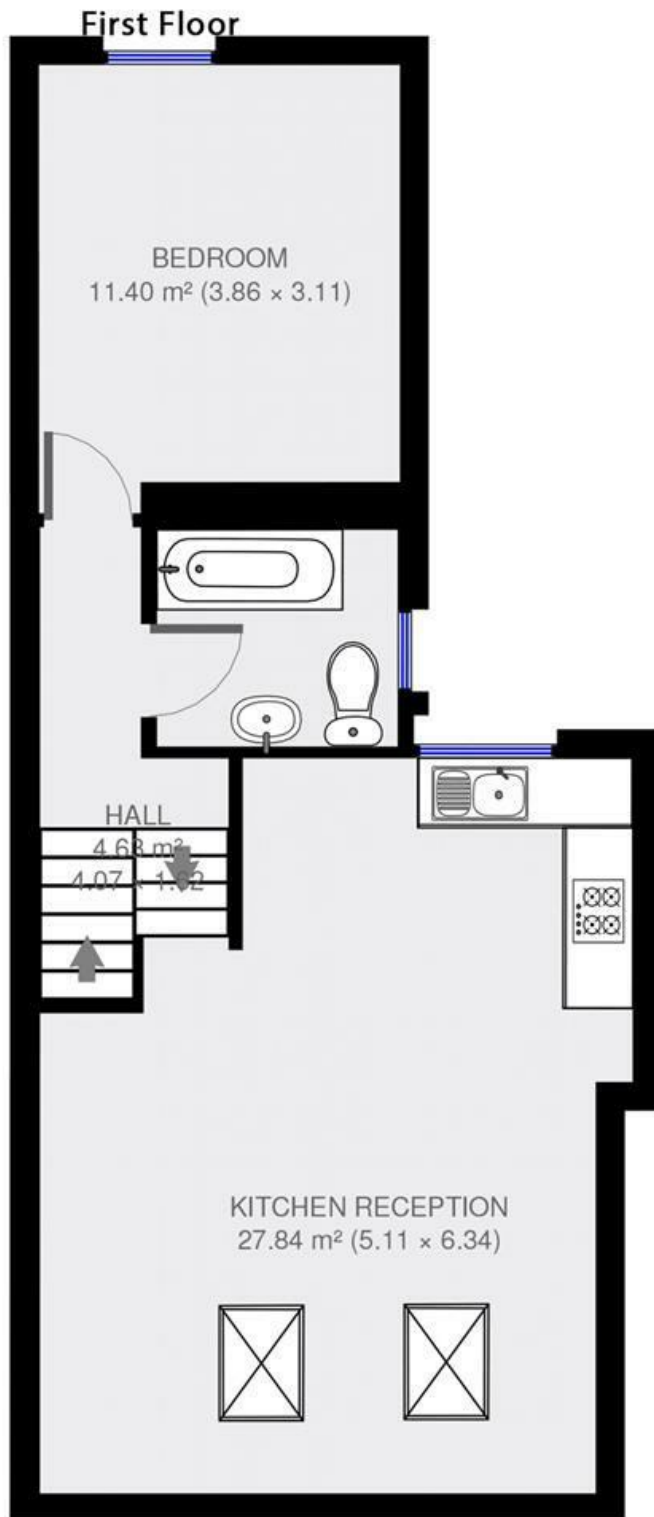
## Features

- Bright and airy
- Stylish split level flat
- 1 Bedroom
- 1 Bathroom
- 1 Reception
- Walking distance between Clapham and Brixton

Council tax band C    EPC rating D (61)



## Lyham Road



**1 bed Flat.**

**Approx internal area:**

**539 sqft 50 sqm**

While we do try our very best, floor plans are produced as a guide only and we take no responsibility for the precise accuracy with which any property is represented

Lyham Road, Clapham, SW2

