**Shakespeare Road, Herne Hill, SE24**

2 bedroom maisonette for sale

£599,950

Share of Freehold

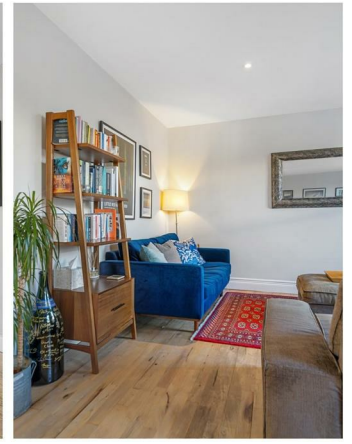
Property Details

A stunning two double bedroom maisonette with its own front door, arranged over the top floors of a Victorian conversion. A wooden staircase winds throughout the home with light streaming through the windows. Spanning the front of the first floor is a spacious reception dining room with large windows, modern downlights and wooden floors. To the rear, the kitchen was installed in 2022 and is well-equipped with grey shaker cabinetry offering generous storage. Finished with white worktops, shelving and a butler sink under the window plus integrated dishwasher. Upstairs, both bedrooms are genuine doubles enjoying views of the skyline for added light and privacy, set to opposing sides of the property, ideal for sharers. The principal is particularly wonderful with two large sash windows framed with wooden shutters, soft tones and carpets. Refurbished in 2021, the bathroom boasts double height ceilings with a solar powered window cascading light over the bathtub with overhead shower. A loft provides a huge amount of storage keeping this fantastic home free of clutter.

Council tax band C EPC rating C (72)

Features

- Two double bedrooms
- Victorian maisonette
- Own front door
- Split over two floors
- Beautifully presented
- Set in the desirable Poet's Corner
- Herne Hill a six-minute walk
- Brixton a ten-minute stroll
- Brockwell Park and Lido at the end of the road
- Share of freehold

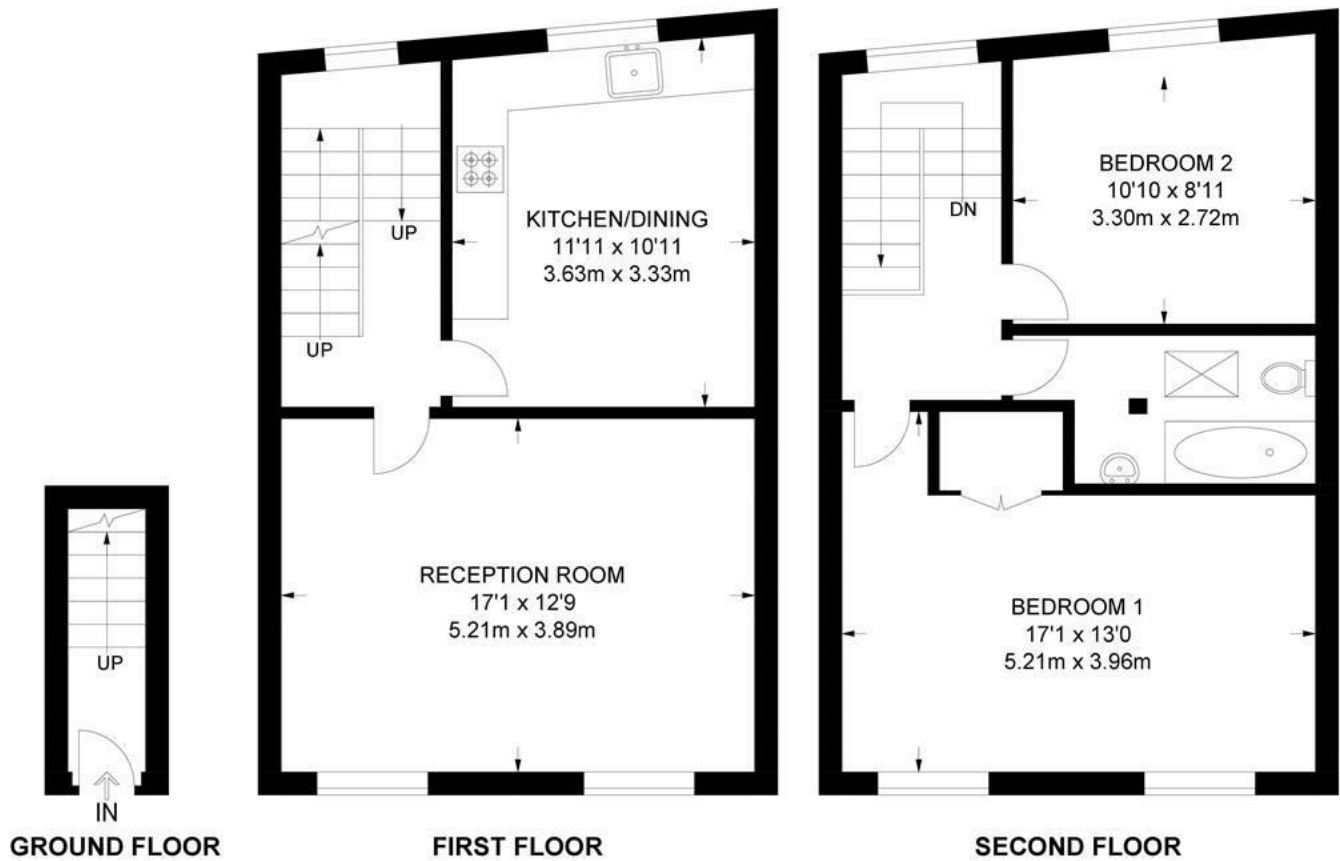


Shakespeare Road, Herne Hill, SE24

Shakespeare Road, SE24

2 Bedroom Flat

APPROXIMATE GROSS INTERNAL AREA: **880 SQ FT / 82 SQ M**



While we try our very best, floor plans are produced as a guide only and we take no responsibility for the precise accuracy with which any property is represented.

Shakespeare Road, Herne Hill, SE24

