



Pinto Tower Apartments
Wandsworth Road, SW8





A fantastic 3 bedroom new build apartment on the 17th floor of Barratt Homes Nine Elms Point. The apartment extends to over 1,916 square foot and benefits from a substantial balcony accessed from the reception room giving 360 degrees view of London along with an extensive roof terrace.

The development is part of Europe's largest regeneration scheme and includes an impressive collection of apartments, which feature elevated parades, landscaped courtyards, a residents fitness suite and a 24 hour concierge service.

Nine Elms Point is conveniently located beside the Nine Elms Northern Line tube station (to open 2020), and includes extensive on-site retail amenities.

- New build
- 24 Hour concierge
- Residents fitness suite
- On site retail
- Nearby New Tube Station

£3,250,000 Guide Price

Tenure: Leasehold
Service Charge: £3610.88p/a approx.
Ground Rent: £750

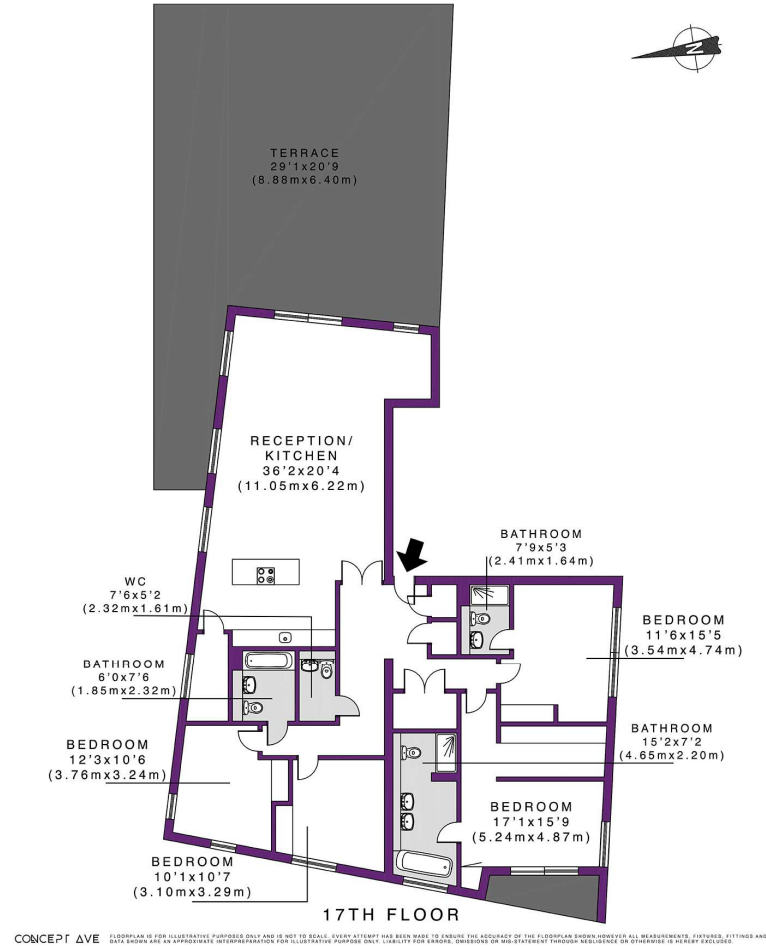
Chestertons New Homes UK
116 Kensington High Street
London
W8 7RW

0207 288 0330
[chestertons.com](https://www.chestertons.com)

CHESTERTONS

Pinto Tower, Wandsworth Road, SW8

Approx. Gross Internal Floor Area:
1916 sq.ft/ 178.0 sq.m



Chesterton Global Ltd trading as Chestertons for themselves and for the vendor of this property whose agents they are, give notice that (i) these particulars do not constitute any part of an offer or contract, (ii) all statements contained within these particulars are made without responsibility on the part of Chestertons or the vendor, (iii) whilst made in good faith, none of the statements contained within these particulars are to be relied upon as a statement or representation of fact, (iv) any intending purchasers must satisfy themselves by inspection or otherwise as to the correctness of each of the statements contained within these particulars, (v) the vendor does not make or give either Chestertons or any person in their employment any authority to make or give representation or warranty whatsoever in relation to this property. Wide angle lenses may be used. ©Copyright Chestertons | Chesterton Global Ltd | Registered Office 40 Connaught Street, Hyde Park, London W2 2AB Registered Company Number 05334580.