



Waterworks Street

Immingham
DN40 1AT

Offers in the Region Of
£134,950

Set within this modern development and benefitting from the remainder of its NHBC warranty is this deceptively spacious two bed semi detached house, situated in the popular port town of Immingham. Ideally suited to first time buyers or buy to let investors, this home is beautifully presented and is turn key ready. The town itself offers plenty with a range of shops, pubs, takeaways and doctors and dentist surgery. There is also good schools for children of all ages. Internal viewing will reveal the entrance porch, lounge, kitchen and WC. To the first floor there are two good bedrooms and the family bathroom. Externally there is off road parking to the front and a side passage leading to the well maintained rear garden.



Lounge

12' 10" x 21' 8" (3.91m x 6.60m)

This deceptively spacious living area benefits from neutral decor, radiator, soft under foot carpeted flooring and patio doors to the rear.

Kitchen

6' 2" x 12' 4" (1.88m x 3.76m)

Carefully designed to utilise every inch of space, this modern kitchen benefits from base and wall mounted units, integrated fridge-freezer, integrate oven with hob and extractor above, LVT flooring, tiled splashback, LED lighting and uPVC window.

WC

3' 4" x 6' 1" (1.02m x 1.85m)

Bedroom 1

11' 10" x 12' 10" (3.60m x 3.91m)

Bedroom one briefly comprises of carpeted flooring, radiator, neutral decor, built in mirror wardrobes and two uPVC windows to the front elevation.

Bedroom 2

8' 6" x 12' 10" (2.59m x 3.91m)

Bedroom two briefly comprises of carpeted flooring, neutral decor, radiator, built in storage with book shelving and uPVC window to the rear elevation.

Bathroom

6' 2" x 7' 5" (1.88m x 2.26m)

The family bathroom benefits from a bath with shower above, WC, basin, vinyl flooring, part tiled walls, LED lighting and uPVC window to the side elevation.

Externally

The front offers a paved driveway with off road parking. Heading through the side passage leads you into the rear garden which is well maintained with set in lawn, patio and space for a shed. The rear garden is a lovely sun trap and ideal for soaking up the sun on a warm summers day.

Tenure

Believed to be Freehold, awaiting solicitors' formal confirmation. All interested parties are advised to make their own enquiries.

Services

All mains services are understood to be connected, however Crofts have not inspected or tested any of the services or service installations & purchasers should rely on their own survey.

Viewings

Please contact the relevant marketing office, all viewings are strictly by appointment only please.

Council Tax Information

Band A: To confirm council tax banding for this property please view the website- www.voa.gov.uk/cti

Free Valuations

We offer a free valuation with no obligation, just call the relevant office, or visit www.croftsestateagents.co.uk seven days a week to arrange your free valuation.

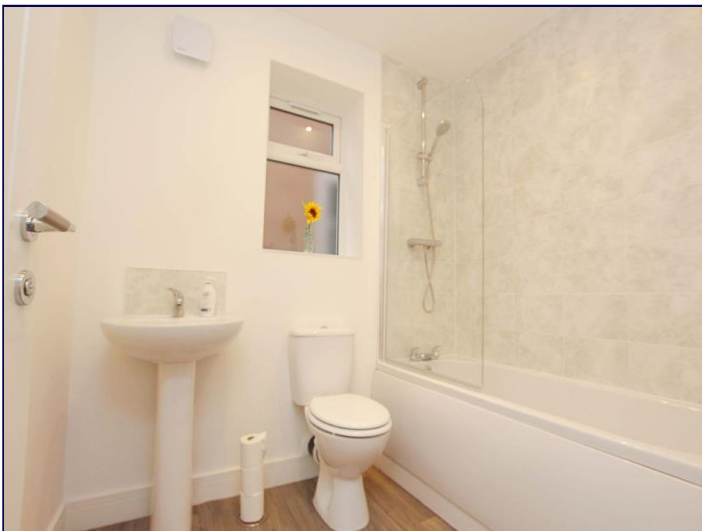
Property Management

We offer a full property management service, offering full and comprehensive credit and referencing checks detailed photographic inventories and regular property inspections to name just a few of our services.

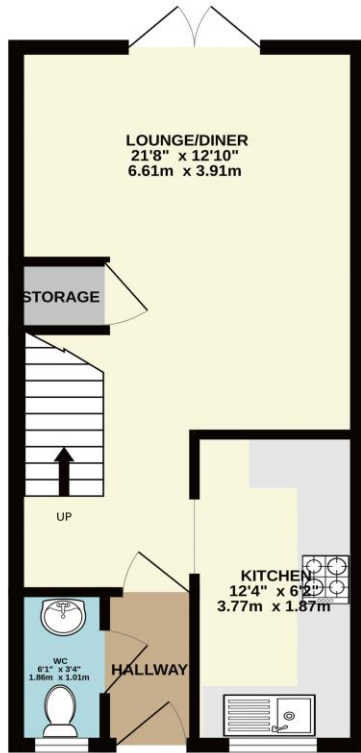
Mortgage and Financial Advice

With access to a range of mortgage products, Crofts Estate Agents Immingham in connection with Forge Financial Solutions Ltd will help you find the best mortgage to suit your needs. Forge Financial Solutions Ltd will act on your behalf in advising you on mortgages and other financial matters.

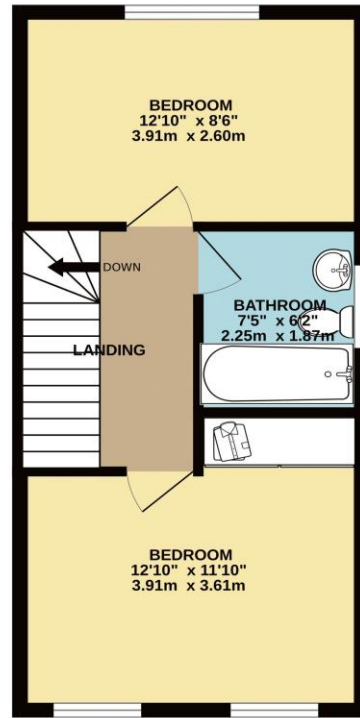
STATUTORY NOTICE: YOUR HOMES IS AT RISK IF YOU DO NOT KEEP UP REPAYMENTS ON A MORTGAGE OR OTHER LOAN SECURED ON IT.



GROUND FLOOR
356 sq.ft. (33.1 sq.m.) approx.

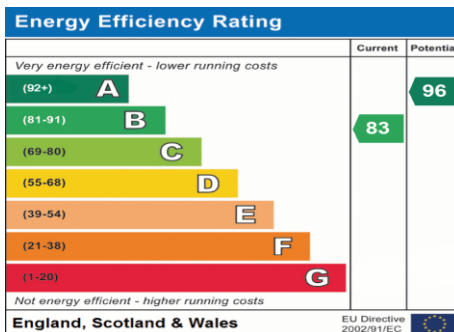


1ST FLOOR
356 sq.ft. (33.1 sq.m.) approx.



TOTAL FLOOR AREA: 712 sq.ft. (66.2 sq.m.) approx.

Whilst every attempt has been made to ensure the accuracy of the floorplan contained here, measurements of doors, windows, rooms and any other items are approximate and no responsibility is taken for any error, omission or mis-statement. This plan is for illustrative purposes only and should be used as such by any prospective purchaser. The services, systems and appliances shown have not been tested and no guarantee as to their operability or efficiency can be given.
Made with Metropix 6/2024



DISCLAIMER - IMPORTANT NOTICE REGARDING SALES PARTICULARS Although we have taken great care to insure the accuracy of the information contained in these particulars, we specifically deny liability for any mistakes, omissions or errors and strongly advise that all proposed purchasers should satisfy themselves by inspection or otherwise, as to their correctness, prior to entering into any commitment to purchase. In particular any information provided in respect of tenure, council tax, rateable values etc has been given in good faith and whilst believed to be correct, may be subject to amendment. Any references to the condition, use or appearance of the property are made for guidance only, and no warranties are given or implied by this information. It is not Crofts policy to check the position with regards to any planning permission or building regulation matters and as such all interested parties are advised to make their own enquiries, in order to ensure that any necessary consents have been obtained. All measurements are approximate and are for guidance only and cannot be relied upon. Measurements are taken from wall to wall unless otherwise stated, with the metric conversion shown in brackets. Any plans or maps contained are for identification purpose only, and are not for any other use but guidance & illustration. Crofts have not tested any apparatus, equipment, fixtures, fittings or services including central heating systems and cannot therefore verify that they are in working order, or fit for their intended purpose. These details do not form any part of any contract, and unless specifically stated otherwise, furnishings and contents are not included within this sale.
Crofts estate agents Immingham is operated as a franchise and trademark by KMG estates (Immingham) Ltd, trading as Crofts estate agents Immingham. Registered in England. Company Number 14308294