

FLOOR PLAN

DIMENSIONS

Lounge
11'02 x 11'02 (3.40m x 3.40m)

Dining Kitchen
14'02 x 11'02 (4.32m x 3.40m)

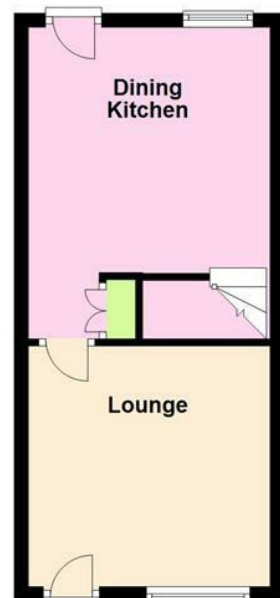
Landing

Bedroom One
11'02 x 11'02 (3.40m x 3.40m)

Bedroom Two
11'02 x 6'05 (3.40m x 1.96m)

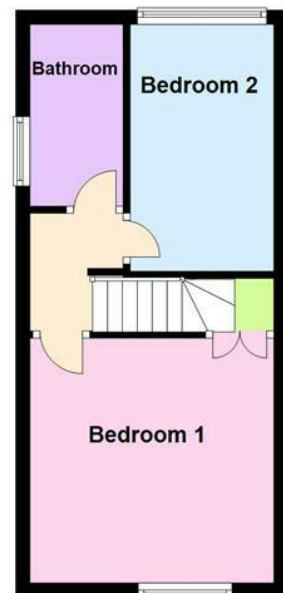
Bathroom
8'03 x 4'03 (2.51m x 1.30m)

Ground Floor
Approx. 27.5 sq. metres (296.3 sq. feet)



Total area: approx. 54.5 sq. metres (587.1 sq. feet)

First Floor
Approx. 27.0 sq. metres (290.9 sq. feet)



19 Saddington Road, Fleckney, LE8 8AX

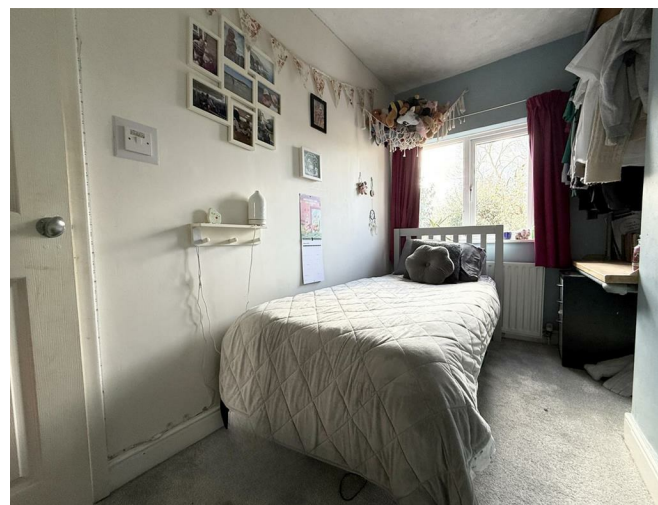
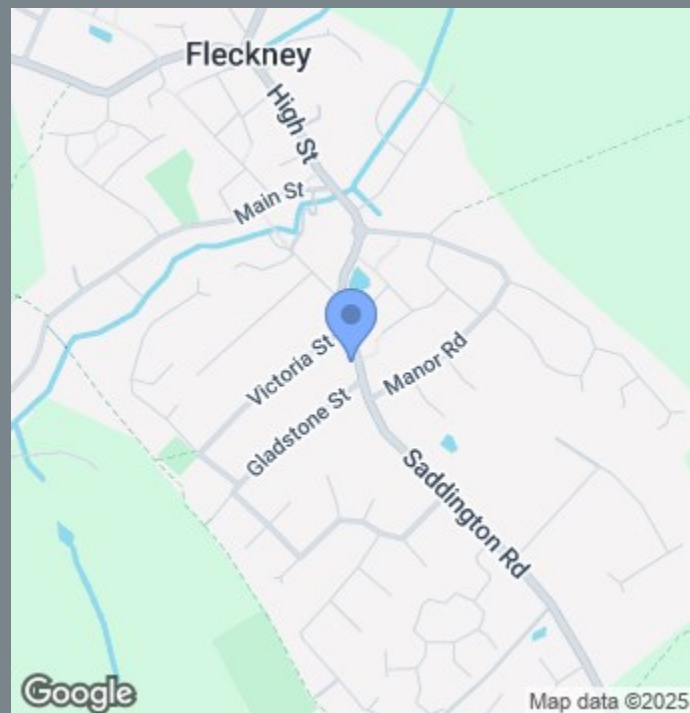
£185,000

OVERVIEW

- Beautiful Semi Detached Cottage
- Picturesque Village Location
- Lounge
- Dining Kitchen
- Two Bedrooms
- Bathroom
- Lovely Garden
- Viewing Is Essential
- EER Rating - D, Freehold
- Council Tax Band - A

LOCATION LOCATION....

Fleckney is a charming village in south Leicestershire featuring a range of amenities. The village is home to several shops, including a post office and chemist. It has a range of pubs, a cafe, chip shop, Chinese takeaway and Indian restaurant. Fleckney also boasts an Ofsted Good rated primary school and is in the catchment of well rated secondary schools. Fleckney is well-connected with bus services to nearby Leicester, Wigston, Wistow and Market Harborough.



THE INSIDE STORY

Nestled in the heart of the picturesque village of Fleckney, this stunning cottage is a true embodiment of charm. As you approach, the cottage welcomes you with its quaint exterior, perfectly complemented by the idyllic surroundings of the village. Step inside, and you are immediately enveloped in a warm and inviting atmosphere. The lounge, with its window to the front, allows natural light to highlight the feature fireplace. The dining kitchen is a true delight, featuring a beamed ceiling that adds a touch of rustic charm. The shaker-style cabinets not only provide ample storage but also enhance the cottage's character. There is plenty of room for a table and chairs, making it an ideal space for family meals and entertaining guests. A barn-style back door opens up to the landscaped garden, seamlessly connecting the indoors with the outdoors. Upstairs, the cottage continues to impress with a landing that leads to two bedrooms, each offering a peaceful retreat. The well-appointed upstairs bathroom features a whirlpool spa bath and shower. The low-maintenance garden is a true gem, offering a serene and tranquil space to relax and unwind. Surrounded by the beauty of Fleckney, this cottage is more than just a home; it is a sanctuary where traditional features and modern comforts come together in perfect harmony.

