



Bramleys
Bannerdown Road | Batheaston



Summary

Bramleys is a delightful 4 bedroom detached well-presented home that sits at the foot of Bannerdown Road and has excellent views over open countryside from the side and rear of the house. This light and airy house offers an excellent balance between internal accommodation and the outside gardens. As well as a double garage there is driveway parking for several vehicles. Bramleys offers a short walk to Batheaston village, with GP Surgery, Chemist, Spa Shop, Post Office and a Primary School.

Location

Bannerdown is an established and highly residential location, on the eastern outskirts of Bath in the suburb of Batheaston, approximately 3.5 miles from the World Heritage City of Bath. Nearby villages include Bathford and Larkhall where there are a number of local shops and amenities, including general stores, doctors' surgery, chemist and excellent village schools. Larkhall village also offers a hardware store, Butchers, Delicatessen, Wine Merchants and the Rondo Theatre. Within a drive, along the London Road there is a Morrisons supermarket. Walks through wonderful open countryside including the cycle path through the Meadows and along the Kennet and Avon Canal in easy reach. Excellent bus service.



- 4 Bedrooms
- Detached residence
- Lounge with separate dining room
- Excellent condition
- Private south westerly facing rear garden

- Double garage and driveway for numerous cars
- Batheaston location
- Bathroom complete with shower cubicle and separate cloakroom
- Light and airy contemporary living space
- Views to front

nashandcobath.co.uk

enquiries@nashandcobath.co.uk

**NASH
& CO**

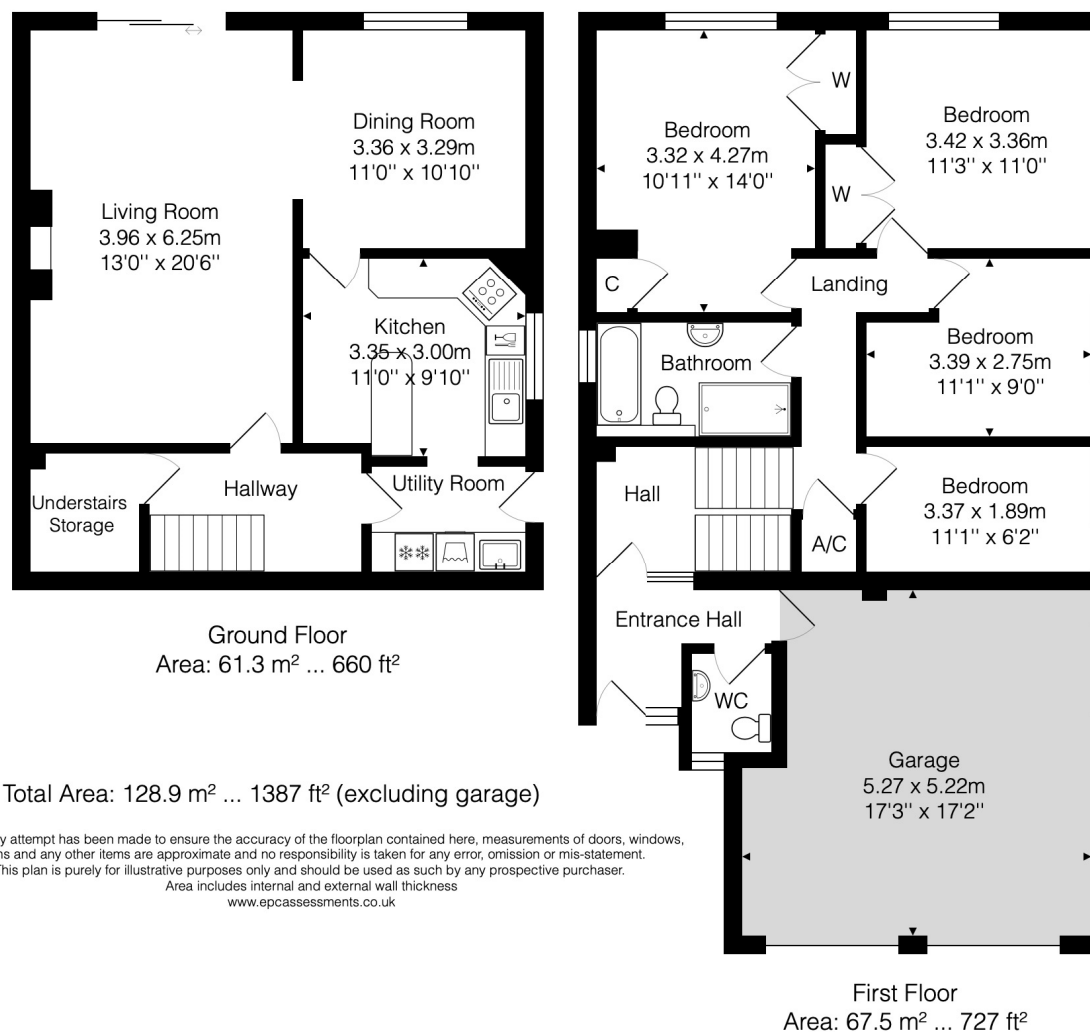


17 Chelsea Road, Bath, BA1 3DU

01225 444 800

enquiries@nashandcobath.co.uk

nashandcobath.co.uk



Nash & Co is a trading name of Nash & Co (Bath) Ltd, a company registered in England & Wales under registration number 09405604 with its registered office at 39 Oolite Road, Bath, BA2 2UU.

Agents Note: These particulars are set out as a general outline only for the guidance of intended purchasers and do not constitute an offer of contract or part thereof. For your information, the agent has not tested any apparatus, equipment, fixtures and fittings or services, so cannot verify they are in working order. A buyer is advised to obtain verification from the solicitor or surveyor. Please note that measurements are approximate only.