



East Close  
Whiteway | Bath

NASH  
& CO





## Summary

A two double bedroom semi-detached in need of some updating, situated in an enviable the corner of a Cul de sac location rather than a main road on estate with a very generous corner plot, fantastic potential to extend STP. Also benefiting from off road driveway parking. Comprising of sitting room, kitchen/diner, downstairs cloakroom, two bedrooms and shower room on first floor. A real opportunity to put your stamp on something and improve and grow into.

## Location

East Close is located on Bath's southern slopes with access to the beautiful nearby countryside. Local shops can be found 5 minutes' walk away on Mount Road, these include Co-op express, Boots pharmacy, newsagents, and takeaways. A regular bus service runs into the city centre. Oldfield Park train station is approx. 30 minutes' walk away. There is a selection of local schools within walking distance. Countryside walks can be enjoyed towards Englishcombe village. The fantastic Two Tunnels cycle and footpath is also accessible. Nearby green spaces include Hillcrest Park, Roundhill Park and Moorfields Sandpits.





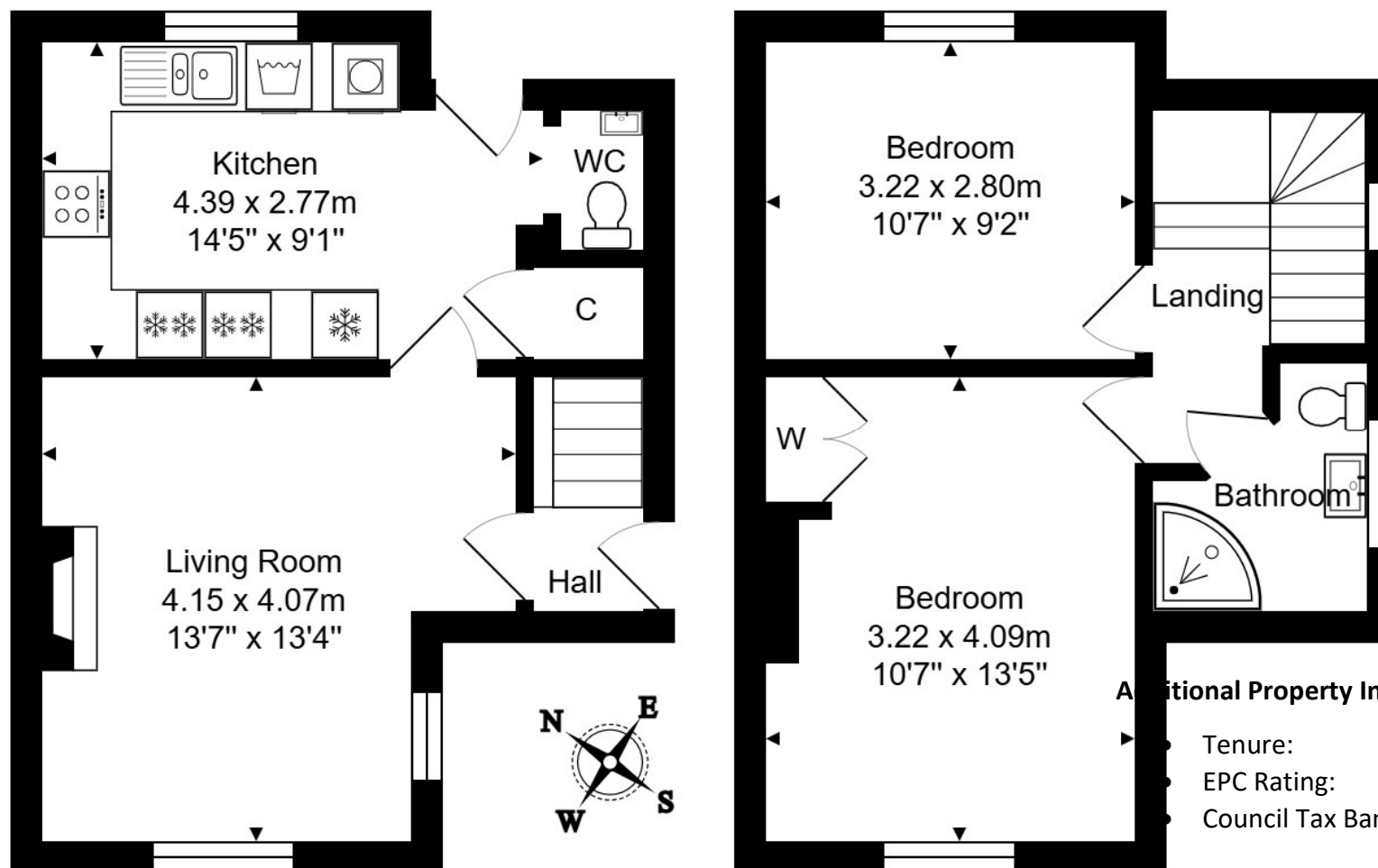
- Two double bedrooms
- Cul de sac location
- Kitchen/diner
- Downstairs cloakroom

- Off road driveway parking
- Large corner plot rear garden
- Corner of cul de sac setting
- In need of updating

[nashandcobath.co.uk](http://nashandcobath.co.uk)

[enquiries@nashandcobath.co.uk](mailto:enquiries@nashandcobath.co.uk)

**NASH  
& CO**



Nash & Co is a trading name of Nash & Co (Bath) Ltd, a company registered in England & Wales under registration number 09405604 with its registered office at 39 Oolite Road, Bath, BA2 2UU.

**Agents Note:** These particulars are set out as a general outline only for the guidance of intended purchasers and do not constitute an offer of contract or part thereof. For your information, the agent has not tested any apparatus, equipment, fixtures and fittings or services, so cannot verify they are in working order. A buyer is advised to obtain verification from the solicitor or surveyor. Please note that measurements are approximate only.