



## Hillside View

Peasedown St John | Nr BATH

**NASH  
& CO**





### Summary

A wonderful opportunity to purchase this delightful, cosy, 2 bedroom former miners cottage located with elevated views over open countryside to the front and with a large garage with wood burner and sliding French doors onto the well-proportioned rear garden. This characterful redbrick property comes with many original features and plenty of character along with a wood burner in the front lounge. The dining room is off the lounge and leads into the fitted kitchen. To the rear there is a downstairs cloakroom off a small utility area. On the first floor there are two double bedrooms and a bathroom with a shower.

### Location

Peasedown St John offers a wide range of local amenities which include a thriving primary school, post office, doctors and dentist's surgeries, shops, and a supermarket. For those wishing to commute, the commercial centres of Bath, Bristol and Wells all lie within daily travelling distance. The Odd Down Park and Ride service is just 3 miles away and there is a regular bus service to the City of Bath and the town centres of Radstock and Midsomer Norton.





- Former miners re brick terraced cottage
- 2 double bedrooms
- Countryside views
- Character and charm throughout
- Very good condition

- Double garage with double glazed French doors onto garden
- Newly fitted bathroom with shower cubicle
- Large garden to rear, mainly laid to lawn with garden shed
- Modern bathroom suite
- Fitted kitchen

[nashandcobath.co.uk](http://nashandcobath.co.uk)

[enquiries@nashandcobath.co.uk](mailto:enquiries@nashandcobath.co.uk)



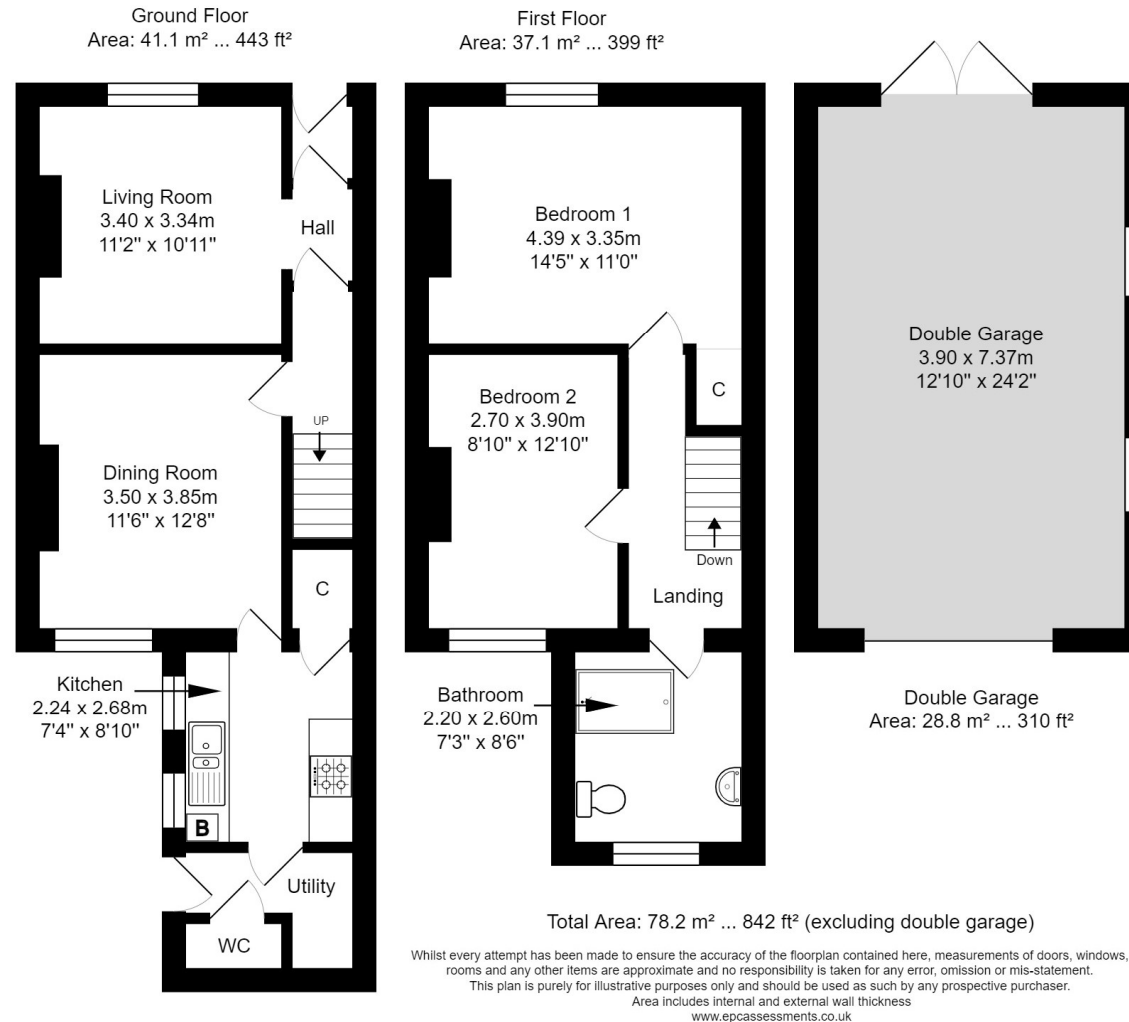


17 Chelsea Road, Bath, BA1 3DU

01225 444 800

enquiries@nashandcobath.co.uk

nashandcobath.co.uk



**Further Information:**

Tenure: **Freehold**

EPC Rating: **D**

Council Tax Band: **B**

Nash & Co is a trading name of Nash & Co (Bath) Ltd, a company registered in England & Wales under registration number 09405604 with its registered office at 39 Oolite Road, Bath, BA2 2UU.

**Agents Note:** These particulars are set out as a general outline only for the guidance of intended purchasers and do not constitute an offer of contract or part thereof. For your information, the agent has not tested any apparatus, equipment, fixtures and fittings or services, so cannot verify they are in working order. A buyer is advised to obtain verification from the solicitor or surveyor. Please note that measurements are approximate only.