



**Purlewent Drive**  
Weston: BATH

**NASH  
& CO**





**Summary**

A mid terraced spacious family home in an elevated position with two reception rooms, tiered front garden and generous rear garden with decked area backing onto Purlewent Park. Steps lead up to the property to the side of tiered front garden. A entrance porch leads to Sitting room with a large double glazed window allowing plenty of light in. Dining room to the rear with doors to rear garden, fully fitted modern kitchen. Three bedrooms & family bathroom on the first floor. The rear garden slopes up to a sun deck with great views and gated access onto Purlewent Park.

**Location**

Located in the popular Weston Village in the World Heritage City of Bath. The property is situated moments away from a variety of local shops and amenities on Weston High Street, including - café, express supermarket, newsagents, bakery, local pharmacy, Italian deli, takeaway and public house. There is regular bus service running throughout the day. The Royal United Hospital is close by on Combe Park. Local schools include; Weston All Saints Primary School, St Mary's RC Primary School and Oldfield Secondary School. King Edwards, The Royal High and Kingswood schools are all a drive away. The Cotswold Way provides great access to the beautiful surrounding countryside and is accessible just at the top of the street. There is easy access to both the A4 to Bristol and the M4 at junction 18.



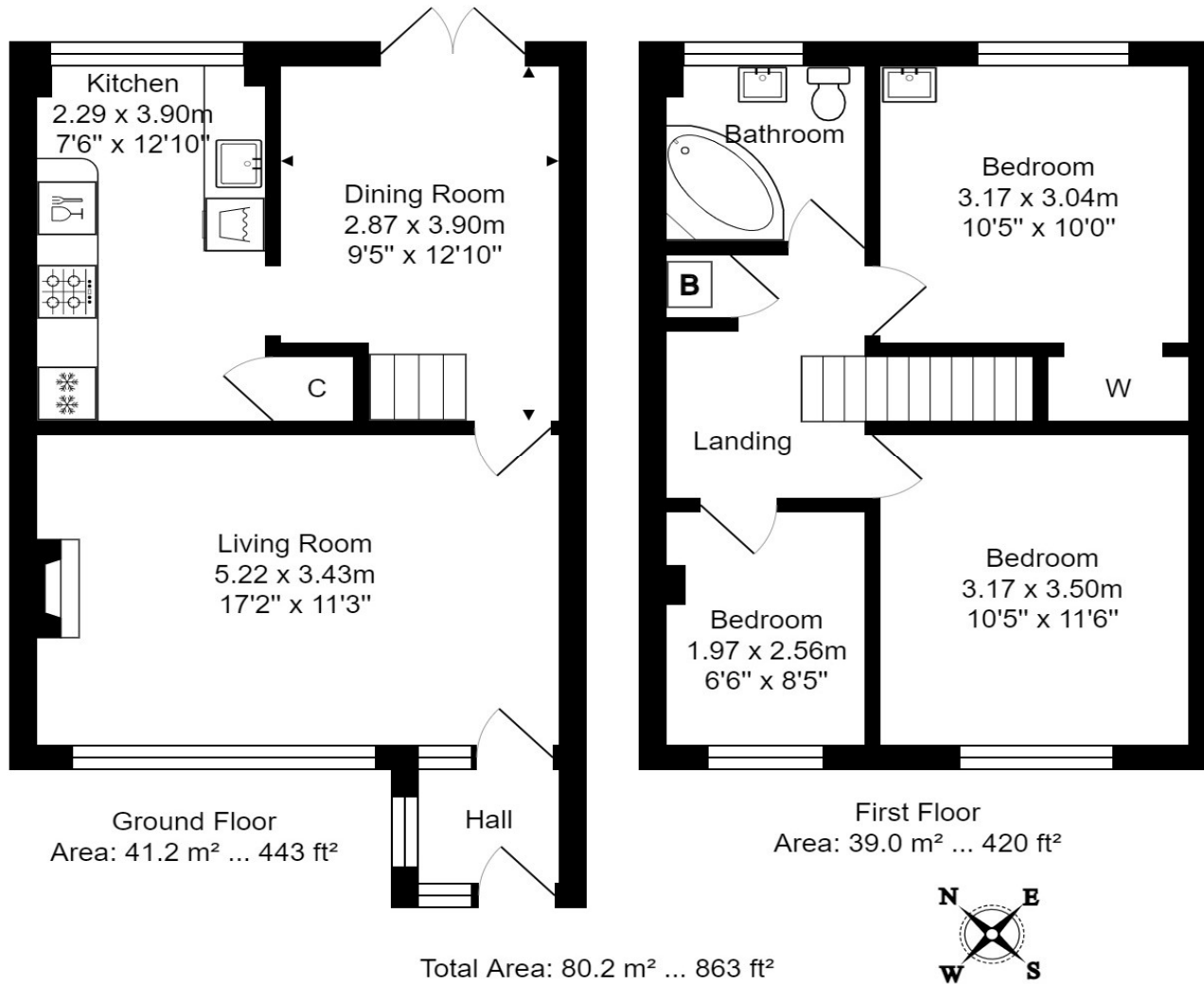
- Elevated Location
- Three Bedrooms
- Two Reception Rooms
- Spacious Accommodation

- Modern Fitted Kitchen
- Good Sized Rear Garden
- Backing Onto Park
- Easy Walk Of Weston High Street

[nashandcobath.co.uk](http://nashandcobath.co.uk)

[enquiries@nashandcobath.co.uk](mailto:enquiries@nashandcobath.co.uk)





Nash & Co is a trading name of Nash & Co (Bath) Ltd, a company registered in England & Wales under registration number 09405604 with its registered office at 39 Oolite Road, Bath, BA2 2UU.

**Agents Note:** These particulars are set out as a general outline only for the guidance of intended purchasers and do not constitute an offer of contract or part thereof. For your information, the agent has not tested any apparatus, equipment, fixtures and fittings or services, so cannot verify they are in working order. A buyer is advised to obtain verification from the solicitor or surveyor. Please note that measurements are approximate only.