



Kingfisher Court,
Burntwood, WS7 9QS

£175,000

£175,000



NO CHAIN Welcome to Kingfisher Court, a well presented two-bedroom ground floor apartment situated in the heart of Burntwood on the popular St. Matthews Estate.

An internal inspection comprises a welcoming hallway, spacious kitchen diner with plenty of space for appliances, one double bedroom with great storage as well an en-suite, a second bedroom, a large living room which features an electric fire and lastly a family bathroom.

Outside the property sits within pleasant communal gardens that are meticulously maintained and also has its own parking space.

Nearby are a variety of local shops, easily accessible transport links and just a short journey into Lichfield City Centre.

DO NOT MISS YOUR CHANCE TO VIEW!!!





Property Specification

SOUGHT AFTER LOCATION
SPACIOUS KITCHEN/DINER
FAMILY BATHROOM
GOOD SIZED LIVING ROOM
LOVELY COMMUNAL GARDENS

Hallway

Living Room 16' 0" x 15' 8" (4.88m x 4.78m)

Kitchen Diner 15' 8" x 13' 6" (4.78m x 4.11m)

Bedroom One 11' 10" x 10' 7" (3.61m x 3.23m)

Bedroom Two 11' 10" x 8' 5" (3.61m x 2.57m)

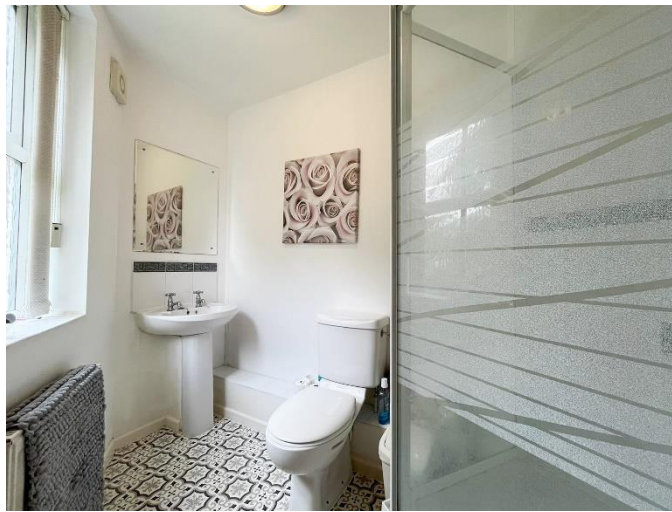
Bathroom

Agent's Note:

Every care has been taken with the preparation of these Sales Particulars but they are for general guidance only and complete accuracy cannot be guaranteed. If there is any point which is of particular importance, professional verification should be sought. The mention of any fixtures, fittings and/or appliances does not imply they are in full efficient working order as they have not been tested. All dimensions are approximate. Photographs are reproduced for general information and it cannot be inferred that any item shown is included in the sale. These Sales Particulars do not constitute a contract or part of a contract.
Came on the market:

Viewer's Note:

Services connected: Water, Gas, Electric and Drainage
Council tax band: C
Tenure: Leasehold
Ground Rent: £273
Service Charge: £1380



Floor Plan

This floor plan is not drawn to scale and is for illustration purposes only



FOR ILLUSTRATIVE PURPOSES ONLY, NOT TO SCALE

Energy Efficiency Rating

Map Location

