



Hall Lane, Drakelow  
Burton-On-Trent, DE15 9PW

Offers Over £230,000

# Drakelow

Offers Over £230,000

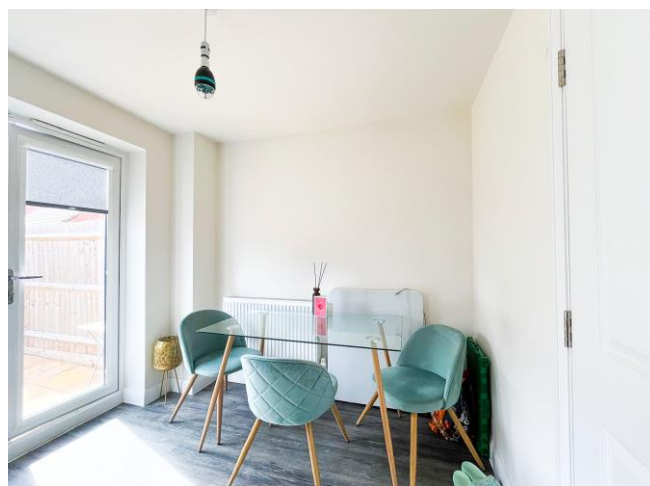


Welcome to Hall Lane, a superbly presented three bedroom townhouse property situated in a sought after area.

Internally this wonderful home features three bedrooms, a large living room, kitchen diner, modern family bathroom and en suite, a charming privately enclosed rear garden and also allocated off road parking.

The area itself is surrounded by lovely scenic countryside but still within easy reach of transport links, schools as well as highly rated bars and restaurants.

**CALL NOW TO VIEW!!!**





**Hallway**

**W/C**

**Living Room 15' 0" x 11' 11" (4.57m x 3.64m)**

**Kitchen Diner 15' 5" x 8' 2" (4.71m x 2.49m)**

**First Floor Landing**

**Bedroom Two 11' 8" x 9' 0" (3.56m x 2.74m)**

**Bedroom Three 11' 6" x 9' 0" (3.51m x 2.74m)**

**Bathroom 8' 2" x 6' 6" (2.49m x 1.97m)**

**Bedroom One 21' 5" x 15' 5" (6.52m x 4.71m)**

**En Suite**

**Agent's Note:**

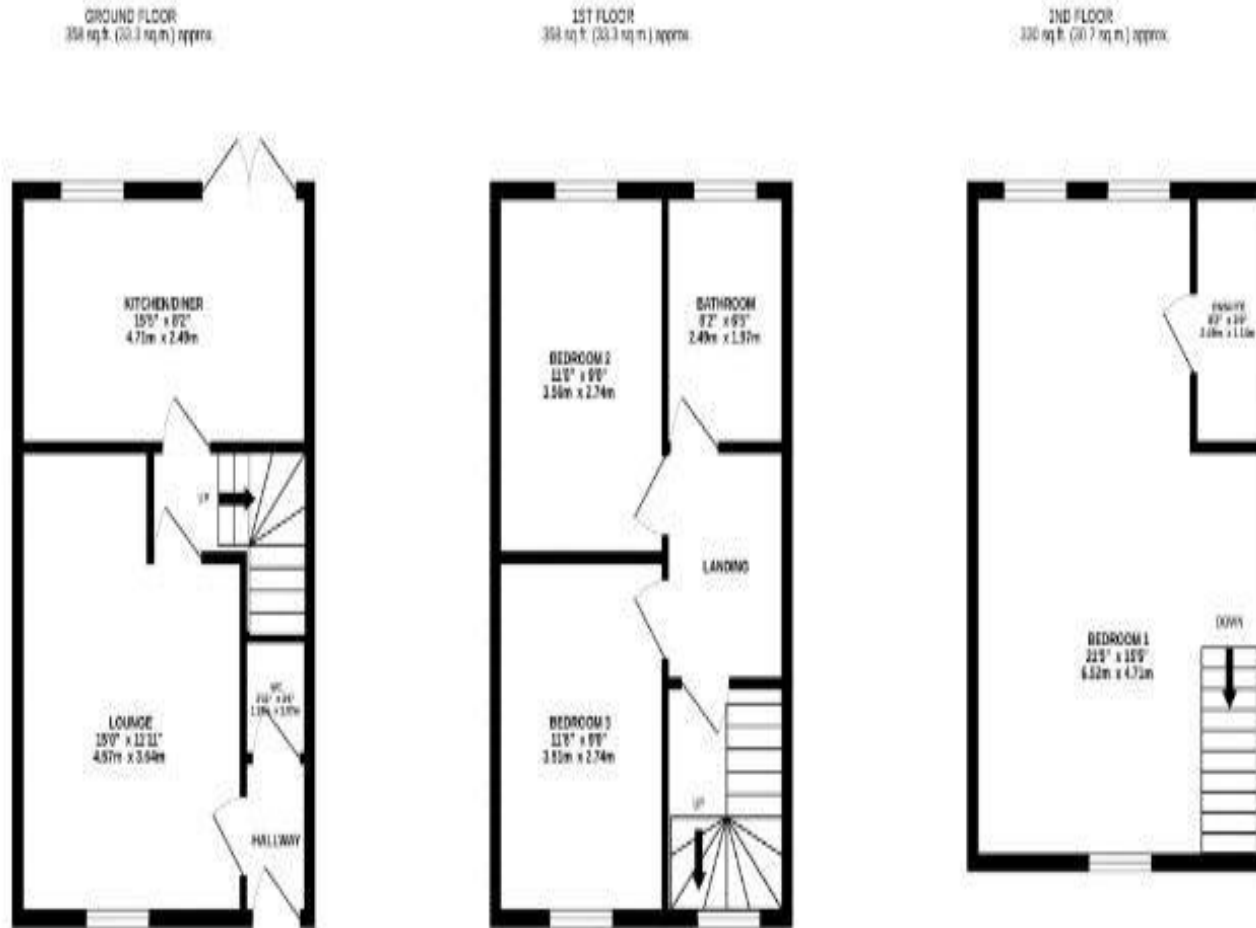
Every care has been taken with the preparation of these Sales Particulars but they are for general guidance only and complete accuracy cannot be guaranteed. If there is any point which is of particular importance, professional verification should be sought. The mention of any fixtures, fittings and/or appliances does not imply they are in full efficient working order as they have not been tested. All dimensions are approximate. Photographs are reproduced for general information and it cannot be inferred that any item shown is included in the sale. These Sales Particulars do not constitute a contract or part of a contract.  
 Came on the market:

**Viewer's Note:**

Services connected: Gas, Electric, Water, Drainage  
 Council tax band: C  
 Tenure: Freehold

# Floor Plan

This floor plan is not drawn to scale and is for illustration purposes only



## Energy Efficiency Rating

Score	Energy rating	Current	Potential
92+	A		96 A
81-91	B	86 B	
69-80	C		
55-68	D		
39-54	E		
21-38	F		
1-20	G		

## Map Location

