



Forge Close, Hammerwich
Burntwood, WS7 0JH

Offers in the Region Of £360,000

Hammerwich

Offers in the Region Of £360,000



Welcome to Forge Close, a beautifully presented three bedroom bungalow situated in a quaint cul-de-sac in the village of Hammerwich.

An internal inspection reveals a welcoming entrance porch, spacious kitchen diner, large family living room with feature stone fireplace, three generous bedrooms all with a good amount of storage and completing the living accommodation is the modern shower room.

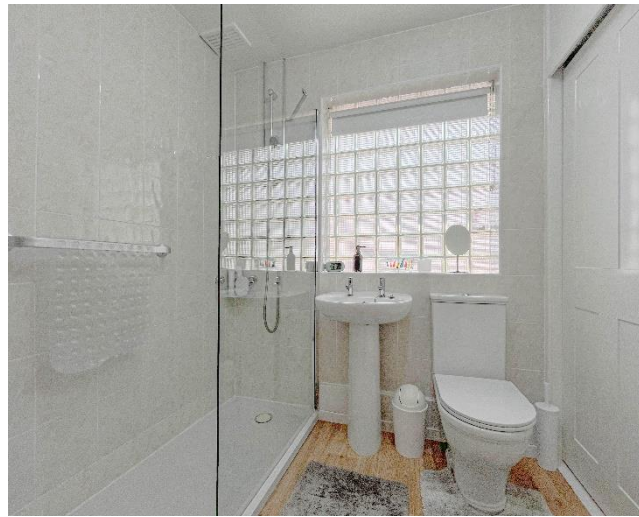
Outside is a well manicured and privately enclosed rear garden perfect for any keen gardener, there is also two useful storage sheds.

To the fore is a multi vehicle driveway and access to a large garage.

Nearby amenities include a handful of local shops, plenty of amenities and also just a short drive into Lichfield City Centre.

Call now to view this exceptional property!!!





Property Specification

HIGHLY SOUGHT AFTER LOCATION
HAMMERWICH VILLAGE
THREE BEDROOMS
LARGE RECEPTION ROOM
KITCHEN DINER

Porch 1.09m (3'7") x 0.92m (3')

Kitchen/Diner 5.66m (18'7") max x 2.94m (9'8")

Living Room 6.13m (20'1") x 3.34m (10'11")

Inner Hallway

Bedroom 1 3.80m (12'6") x 2.94m (9'8")

Bedroom 2 3.29m (10'10") x 2.83m (9'3")

Bedroom 3 2.94m (9'8") x 2.46m (8'1")

Bathroom 2.13m (7') x 0.58m (1'11")

Garage 5.19m (17') x 2.84m (9'4")

Agent's Note:

Every care has been taken with the preparation of these Sales Particulars but they are for general guidance only and complete accuracy cannot be guaranteed. If there is any point which is of particular importance, professional verification should be sought. The mention of any fixtures, fittings and/or appliances does not imply they are in full efficient working order as they have not been tested. All dimensions are approximate. Photographs are reproduced for general information and it cannot be inferred that any item shown is included in the sale. These Sales Particulars do not constitute a contract or part of a contract.
Came on the market:

Viewer's Note:

Services connected: Gas, Electric, Water, Drainage
Council tax band: D
Tenure: Freehold

Floor Plan

This floor plan is not drawn to scale and is for illustration purposes only



Total area: approx. 97.2 sq. metres (1046.4 sq. feet)

Energy Efficiency Rating

Map Location

