



Watkiss Drive, Rugeley, WS15 2PN

Offers in Excess of £200,000

Offers in Excess of £200,000



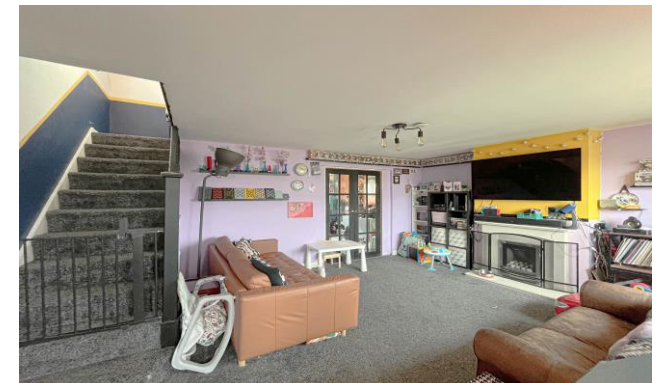
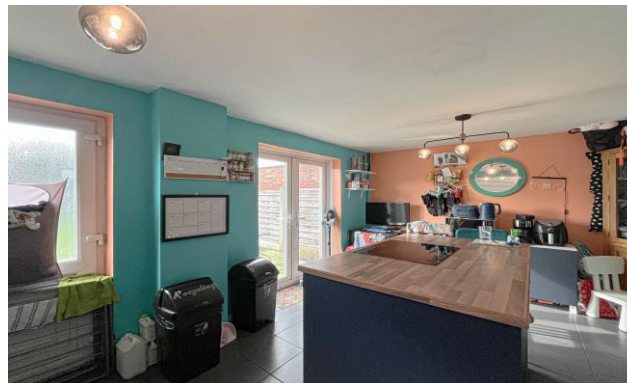
Welcome to Watkiss Drive, a superb three bedroom property situated in a charming cul de sac location. An internal inspection reveals an inviting reception room, stunning modern kitchen diner with island and space for appliances.

The stairs lead to the first floor where the property boasts three generous bedrooms and a recently refinished bathroom.

Outside is a well manicured and privately enclosed garden and to the fore is a multi vehicle driveway.

Nearby amenities include a handful of local shops, easily accessible transport links and highly regarded local schools.

You are also a stones throw from Cannock Chase the perfect place to spend time with family and friends.





## Property Specification

SPACIOUS FAMILY HOME  
SOUGHT AFTER LOCATION  
LARGE MODERN KITCHEN DINER  
EXCELLENT LIVING ROOM

Living Room 16' 8" x 15' 9" (5.07m x 4.80m)

Kitchen Diner 22' 2" x 16' 2" (6.76m x 4.94m)

### Landing

Bedroom One 13' 0" x 9' 11" (3.97m x 3.02m)

Bedroom Two 10' 10" x 9' 11" (3.29m x 3.01m)

Bedroom Three 10' 4" x 6' 5" (3.16m x 1.95m)

Bathroom 6' 7" x 6' 7" (2.00m x 2.00m)

### Agent's Note:

Every care has been taken with the preparation of these Sales Particulars but they are for general guidance only and complete accuracy cannot be guaranteed. If there is any point which is of particular importance, professional verification should be sought. The mention of any fixtures, fittings and/or appliances does not imply they are in full efficient working order as they have not been tested. All dimensions are approximate. Photographs are reproduced for general information and it cannot be inferred that any item shown is included in the sale. These Sales Particulars do not constitute a contract or part of a contract.  
Came on the market:

### Viewer's Note:

Services connected: Gas, Electric, Water, Drainage  
Council tax band: B  
Tenure: Freehold

