



Flat 3, 22 King Street
Tavistock, Devon, PL19 0DT

Guide Price £95,000



Property

Offered with no onward chain. Purpose built first floor flat, situated in a convenient position close to Tavistock town centre, with residents parking close by.

The property comprises: communal entrance, hall, sitting room, bedroom, kitchen, bathroom and parking.

Accommodation

Communal Entrance

Door with entry phone system, staircase rises to:

First Floor

Door into:

Hall

Wall mounted fuse box, coat hooks, airing cupboard housing domestic hot water cylinder.

Sitting Room – 12' x 11' 1 (3.66m x 3.39m)

Window to the front, night storage heater, entry phone.

Kitchen – 8' 5 x 4' 7 (2.56m x 1.40m)

Fitted with wall and base cupboards, inset stainless steel sink unit, strip light.



Bedroom – 11' 10 x 8' 12 (3.60m x 2.74m)

Window to the front, night storage heater.

Bathroom

Fitted with panelled bath with Mira electric shower over, low level w.c. and pedestal wash hand basin, extractor fan, heated towel rail.

Parking

There is residents parking located off Drake Road, by the viaduct, just a short walk from the property.



Service Charge: Currently £500 per annum, paid quarterly.

Ground Rent: £100 per annum.

Lease Details: TBC

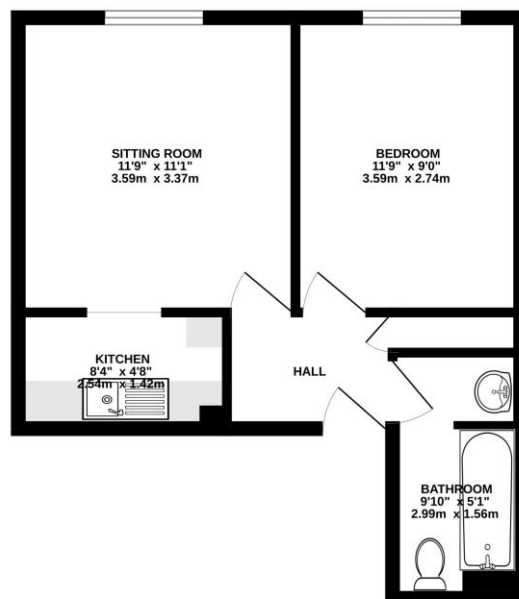
Council Tax Band: B

Local Authority: West Devon

Postcode for SatNav: PL19 0DT



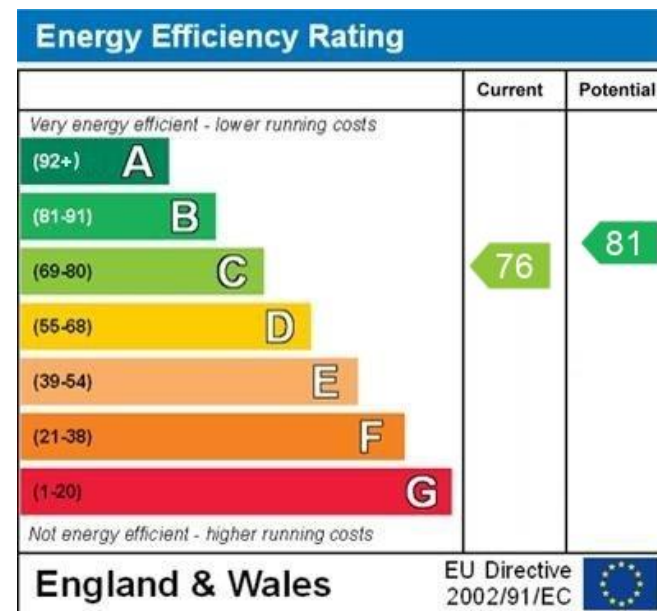
GROUND FLOOR
361 sq.ft. (33.5 sq.m.) approx.



TOTAL FLOOR AREA: 361 sq ft (33.5 sq.m.) approx.
Whilst every attempt has been made to ensure the accuracy of the figures contained here, measurements of doors, windows, rooms and any other items are approximate and no responsibility is taken for any error, omission or misstatement. This plan is for illustrative purposes only and should be used as such by any prospective purchaser. The services, systems and appliances shown have not been tested and no guarantee as to their quality or efficiency can be given.
Made with Metronix 12/2025

IMPORTANT NOTICE/CONSUMER PROTECTION REGULATIONS

While we endeavour to provide accurate and reliable sales details, they are intended as a general guide only. If there is any point of particular importance to you, please make prior contact with our office, especially if you contemplate travelling some distance to view the property. The agent has not tested any apparatus, equipment fittings or services and so cannot verify that they are in working order, or fit for their purpose. The buyer is advised to obtain verification from their solicitor or a surveyor. Photographs produced with wide angle lens, unless stated. All measurements are approximate and calculated between the major prevailing and opposing wall/skirt board surfaces, subject to bays, alcoves, projections, etc. as quoted. In the case of an irregular size room an average measurement may be quoted.



WWW.EPC4U.COM

VIEWINGS STRICTLY BY APPOINTMENT

Tel: 01822 665040

Mob: 07887 893217

Email: steve@steve-england.co.uk

Websites: www.steve-england.co.uk
www.rightmove.co.uk

Little Orchard, North Road, Yelverton,
Devon, PL20 6EE

