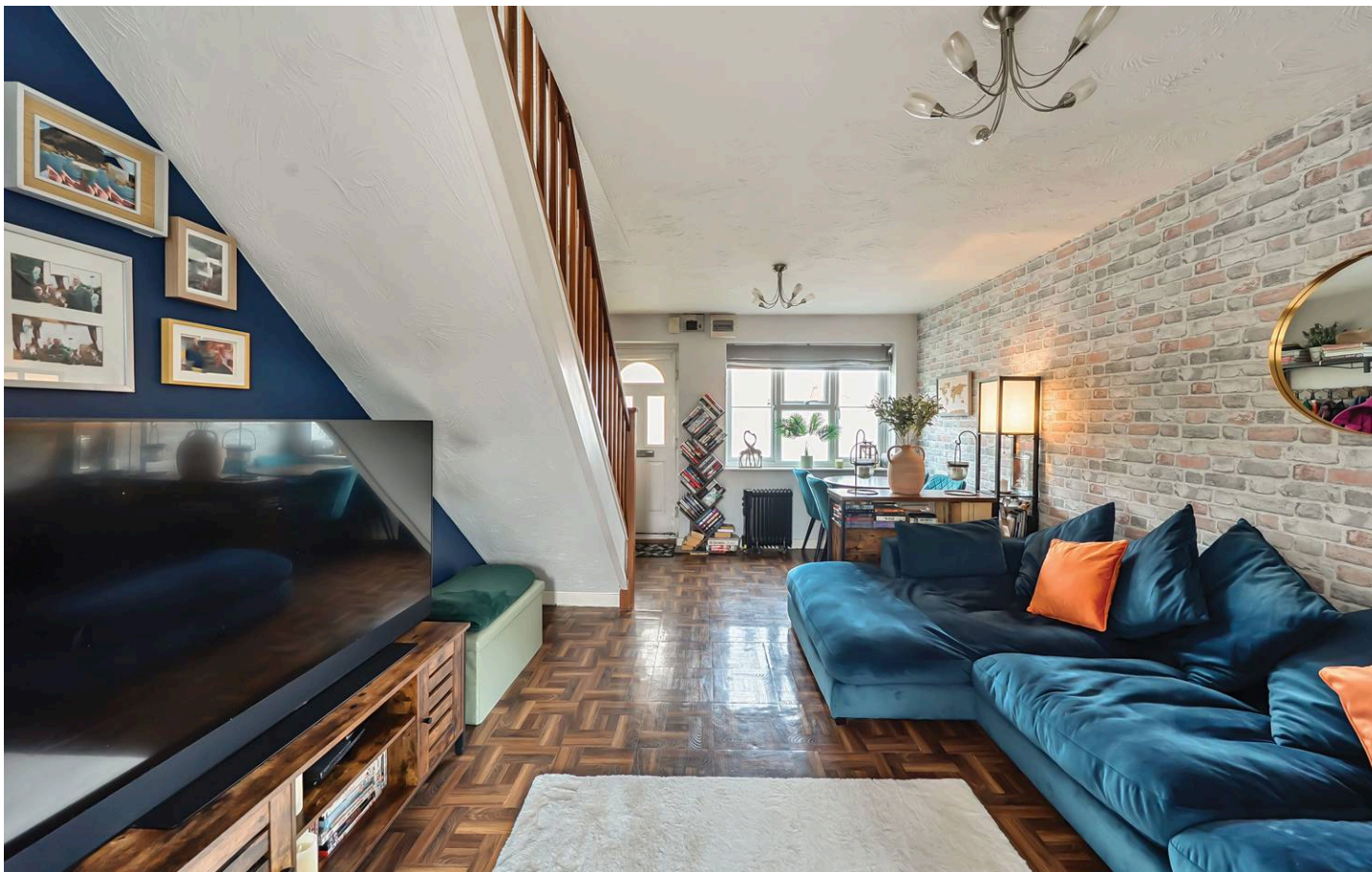




36 Roman Way, Bicester
Bicester

Fixed Price **£275,000**



36 Roman Way

Bicester, Bicester

Charming 2-Bedroom Home Just Minutes from Bicester Town Centre Perfect for First-Time Buyers or Young Families

We're delighted to bring to market this beautifully presented two-bedroom home, ideally located just a short stroll from Bicester's vibrant town centre, schools, and local amenities. Thoughtfully updated and ready to move straight into, this inviting property offers a perfect blend of comfort, style, and convenience —making it an excellent choice for first-time buyers or young families looking to put down roots.

Step inside and you'll find a welcoming open-plan lounge and dining area—perfect for cosy nights in or entertaining friends and family. The space flows seamlessly into a well-appointed kitchen, creating a bright and sociable heart to the home.

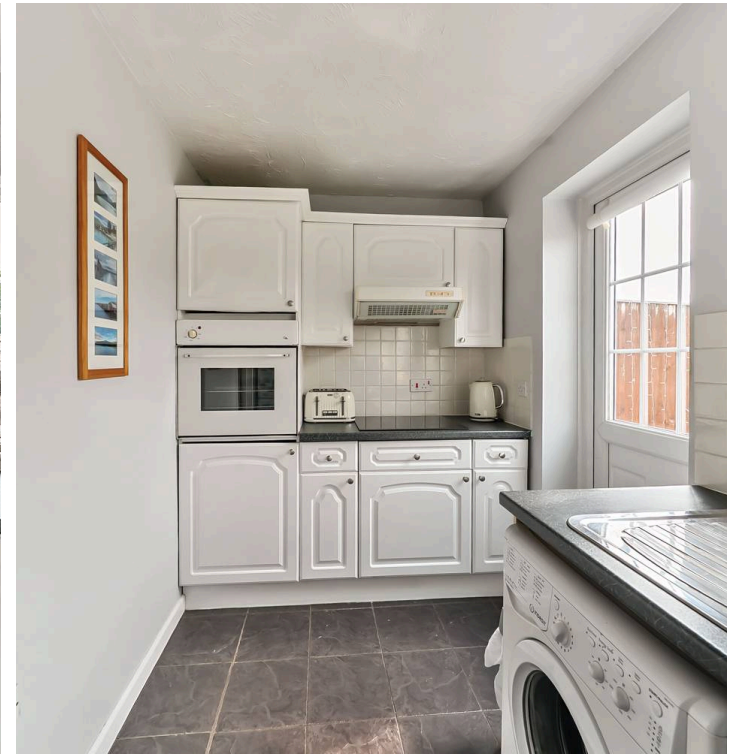


36 Roman Way

Bicester, Bicester

Upstairs, the home continues to impress. There's a spacious double bedroom with ample room for wardrobes and storage, and a second bedroom that's ideal for a nursery, child's room, or home office. Recent updates include plush new carpets on the stairs and landing, and luxurious Karndean flooring in both bedrooms—installed in February for a fresh, modern finish. All the upstairs doors have also been repainted and fitted with new handles, giving the home a clean and contemporary feel.

The rear garden is a true highlight—A lovely suntrap, it's the perfect spot to enjoy a peaceful coffee, play with little ones, or relax with friends. Easy to care for, the garden features a selection of mature evergreen plants that require minimal upkeep beyond regular watering.





With its welcoming feel, tasteful updates, and excellent location, this home offers a fantastic opportunity to take your first step onto the property ladder or create a wonderful base for a young family.

Key Information:

Price - £275,000

EPC grade: E

Council tax band: B

Central heating: Other

Parking: Allocated

Utilities: Mains gas, electricity, water and drainage

Construction: Standard

Estimated broadband speeds: Standard 19mpbs /
Superfast 80mpbs/ Ultrafast 1800mpbs

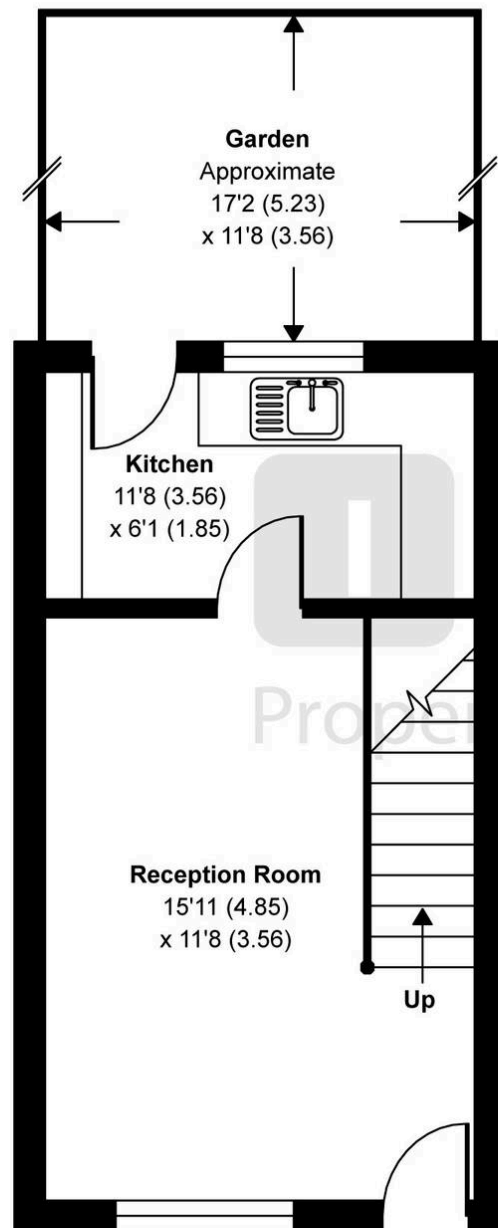
Mobile signal: check <https://checker.ofcom.org.uk/en-gb/mobile-coverage>

Flood risk: Surface water Very low

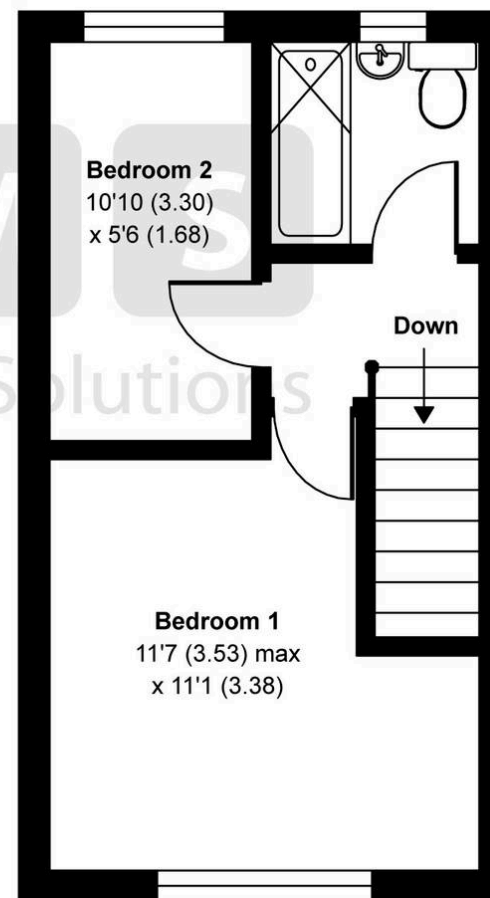
Roman Way, Bicester, OX26

Approximate Area = 526 sq ft / 48.8 sq m

For identification only - Not to scale



GROUND FLOOR



FIRST FLOOR





IMS Property Group

I M S Property Group, 18 Kings End - OX26 2AA

01869 248339

sales@imspropertygroup.co.uk

imspropertygroup.co.uk