



Parkholme Road, London, E8

BUTLER  STAG



Stunning split level one bedroom period conversion situated on London Fields premier turning, benefiting from a small private garden.

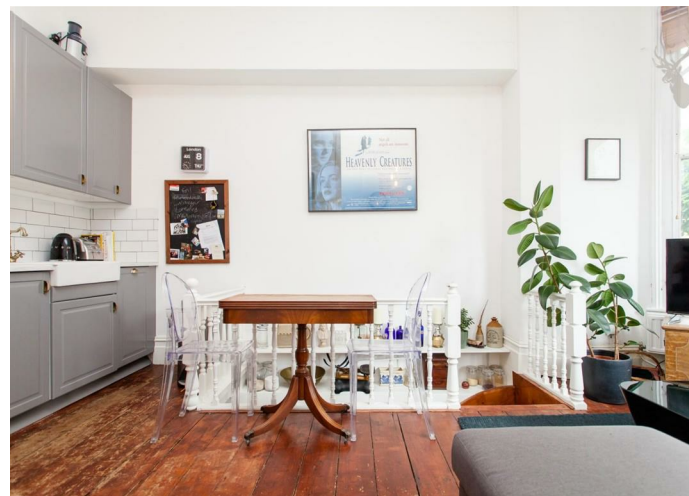
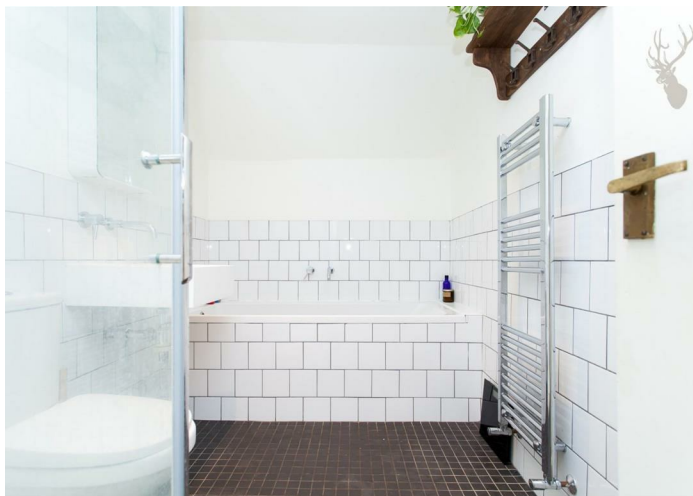


- Split Level Apartment
- Wooden Floorboards
- Stunning Road
- Available 8th of March
- High Ceilings
- Bath and Walk-in Shower
- Private Outside Patio Garden
- London Fields

Arranged over two floors, this charming apartment boasts a wealth of character, light and space. The ground floor features an open-plan kitchen/living area with a modern finish. The lower ground floor hosts a large bedroom with an en-suite shower room and plenty of storage, as well as direct access to the private garden.

Conveniently located in trendy Dalston, offering access to a host of bars, restaurants and coffee shops, as well as popular green spaces, the property is also just a short distance from Dalston Kingsland and Hackney Downs Overground stations, offering quick and easy access across London.

EPC Rating D
Council Tax Band C

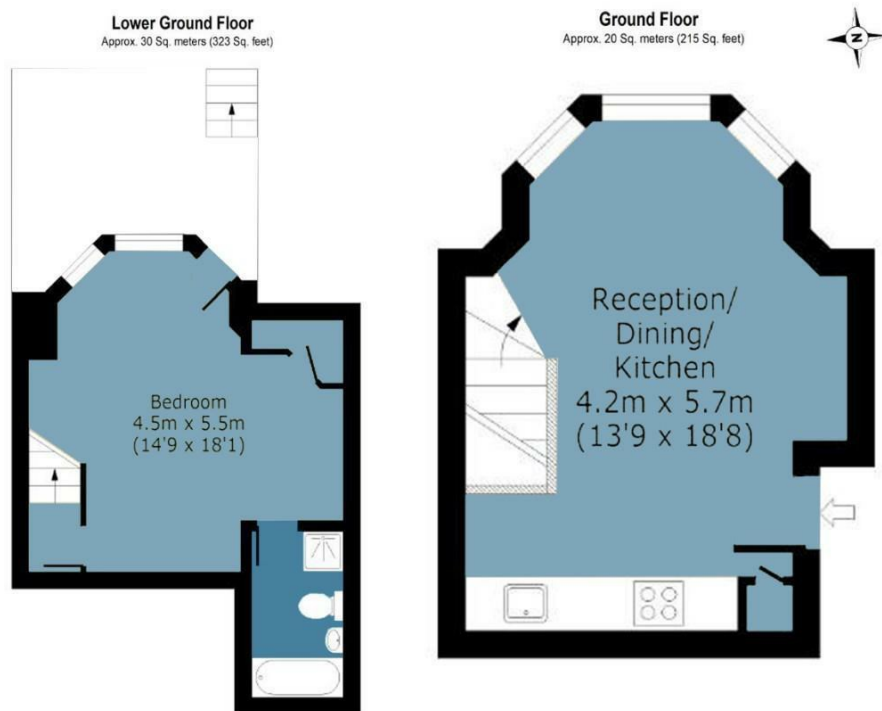




Parkholme Road

Approx. Gross Internal Area 50 Sq M (538 Sq Ft)

BUTLER & STAG



Measurements are approximate and for illustration purposes only. While we do not doubt the accuracy and completeness, we advise you conduct a careful independent assessment of the property to determine monetary value.
© @modephoto.uk www.modephoto.co.uk

IMPORTANT NOTICE - These particulars have been prepared in good faith and they are not intended to constitute part of an offer or contract. We have not performed a structural survey on this property and the services, appliances and specific fittings have not been tested. All photographs, measurements, floor plans and distances referred to are given as a guide and should not be relied upon.

BUTLER & STAG

☎ 020 8102 1236

🏠 508 Roman Road, Bow, London, E3 5LU

✉ bow@butlerandstag.com

www.butlerandstag.uk