



Malesbury Road, London, E3

BUTLER  STAG



Unique one bedroom three-storey townhouse on a quiet residential road in a great location close to a range of transport links, Victoria Park and Roman Road.



- Three Storey Townhouse
- Balcony
- Close to Mile End Underground Station
- Part Furnished
- One Bedroom
- Useful Mezzanine Loft Space
- Victoria Park & Roman Road Nearby
- Available Early March 2026

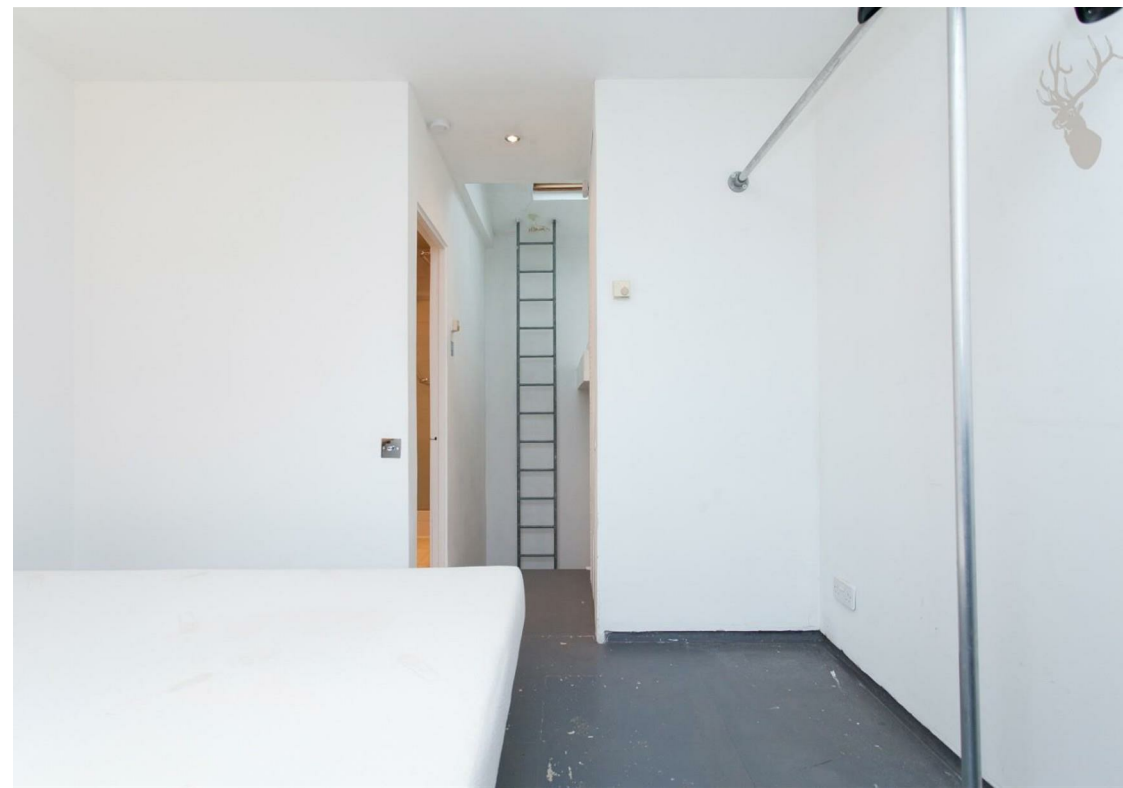
Accessed via your own front door, there is a large utility/storage room on the ground floor, an open-plan kitchen / living space on the first floor and a double bedroom with shower room on the top floor. Further benefitting from a balcony accessed via the bedroom, the property also enjoys access to a mezzanine loft space, perfect for storage.

Malmesbury Road is well placed for both Mile End and Bow Road underground stations, as well as Bow Church DLR.

Ideally suited to a single professional or a couple, this part furnished property is available from 4th March 2026.

EPC Rating D
Council Tax Band C





Malmesbury Road

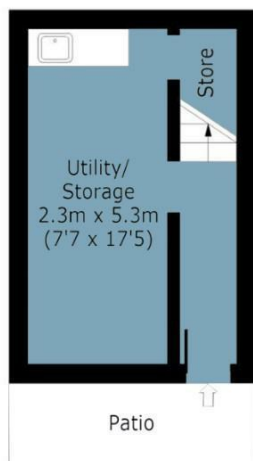
Approx. Gross Internal Area 77 Sq M (829 Sq Ft)

BUTLER & STAG



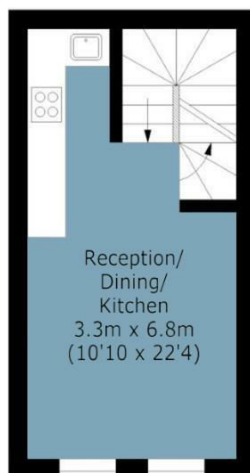
Ground Floor

Approx. 17 Sq. meters (183 Sq. feet)



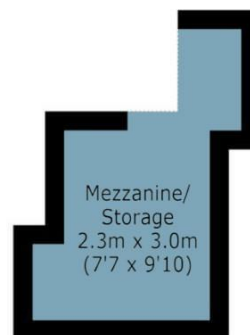
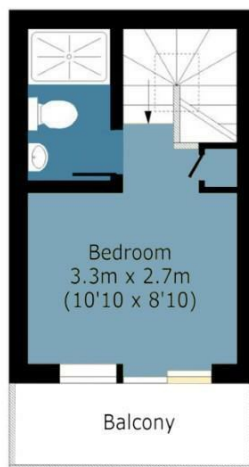
First Floor

Approx. 22 Sq. meters (237 Sq. feet)



Second Floor

Approx. 17 Sq. meters (183 Sq. feet)



Measurements are approximate and for illustration purposes only. While we do not doubt the accuracy and completeness, we advise you conduct a careful independent assessment of the property to determine monetary value.
© @modephoto.uk www.modephoto.co.uk

IMPORTANT NOTICE - These particulars have been prepared in good faith and they are not intended to constitute part of an offer or contract. We have not performed a structural survey on this property and the services, appliances and specific fittings have not been tested. All photographs, measurements, floor plans and distances referred to are given as a guide and should not be relied upon.

BUTLER & STAG

☎ 020 8102 1236

🏠 508 Roman Road, Bow, London, E3 5LU

✉ bow@butlerandstag.com

www.butlerandstag.uk