



Killick Way, London, E1

BUTLER & STAG



**Guide Price £600,000 - £650,000**  
**Occupying the top floor of a striking modern development, this impressive 918 Sq/Ft dual-aspect three-bedroom, two-bathroom apartment in Sculpture House, Stepney Green offers contemporary living at its finest. Flooded with natural light and designed for comfort and style, the apartment boasts panoramic views across the London skyline, creating an exceptional backdrop both day and night.**

## Leasehold

- Top Floor (Eighth Floor)
- 918 Sq/Ft Internal Living Space
- Two Bathrooms
- Lift Access To All Levels / Bicycle Storage / Secure Entry Phone System
- Dual Aspect Apartment With Panoramic Views Of London's Skyline
- Three Bedrooms
- Open Plan Concept Living Space
- Stepney Green Tube Station Close By

The spacious open-plan living and dining area provides an ideal setting for relaxing or entertaining, seamlessly connecting to a sleek, fully integrated kitchen. All three bedrooms are well-proportioned, with the principal bedroom benefiting from an en-suite bathroom. A second modern bathroom completes the layout.

Further highlights include high-quality finishes throughout, excellent storage, lift access to all levels, bicycle storage and secure entry.

Positioned moments from Stepney Green tube station, the property offers superb transport links along with easy access to local parks, restaurants, and amenities.

A rare opportunity to acquire a beautifully presented top-floor residence with spectacular views in one of East London's most vibrant neighbourhoods.



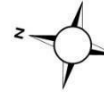




## Sculpture House

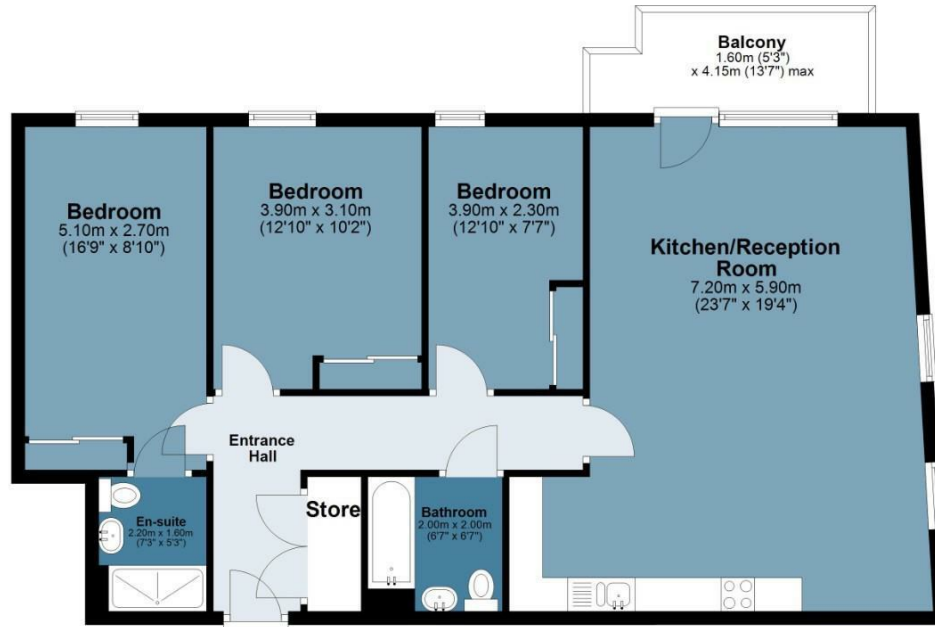
Approx. Gross Internal Area 85.3 Sq M ( 918.1 Sq Ft )

BUTLER & STAG



### Eighth Floor

Approx. 85.3 sq. metres (918.1 sq. feet)



Measurements are approximate and for illustration purposes only. While we do not doubt the accuracy and completeness, we advise you conduct a careful independent assessment of the property to determine monetary value.  
© @modephoto.uk www.modephoto.co.uk

IMPORTANT NOTICE - These particulars have been prepared in good faith and they are not intended to constitute part of an offer or contract. We have not performed a structural survey on this property and the services, appliances and specific fittings have not been tested. All photographs, measurements, floor plans and distances referred to are given as a guide and should not be relied upon.

BUTLER & STAG

☎ 020 8102 1236

🏠 508 Roman Road, Bow, London, E3 5LU

✉ bow@butlerandstag.com

[www.butlerandstag.uk](http://www.butlerandstag.uk)