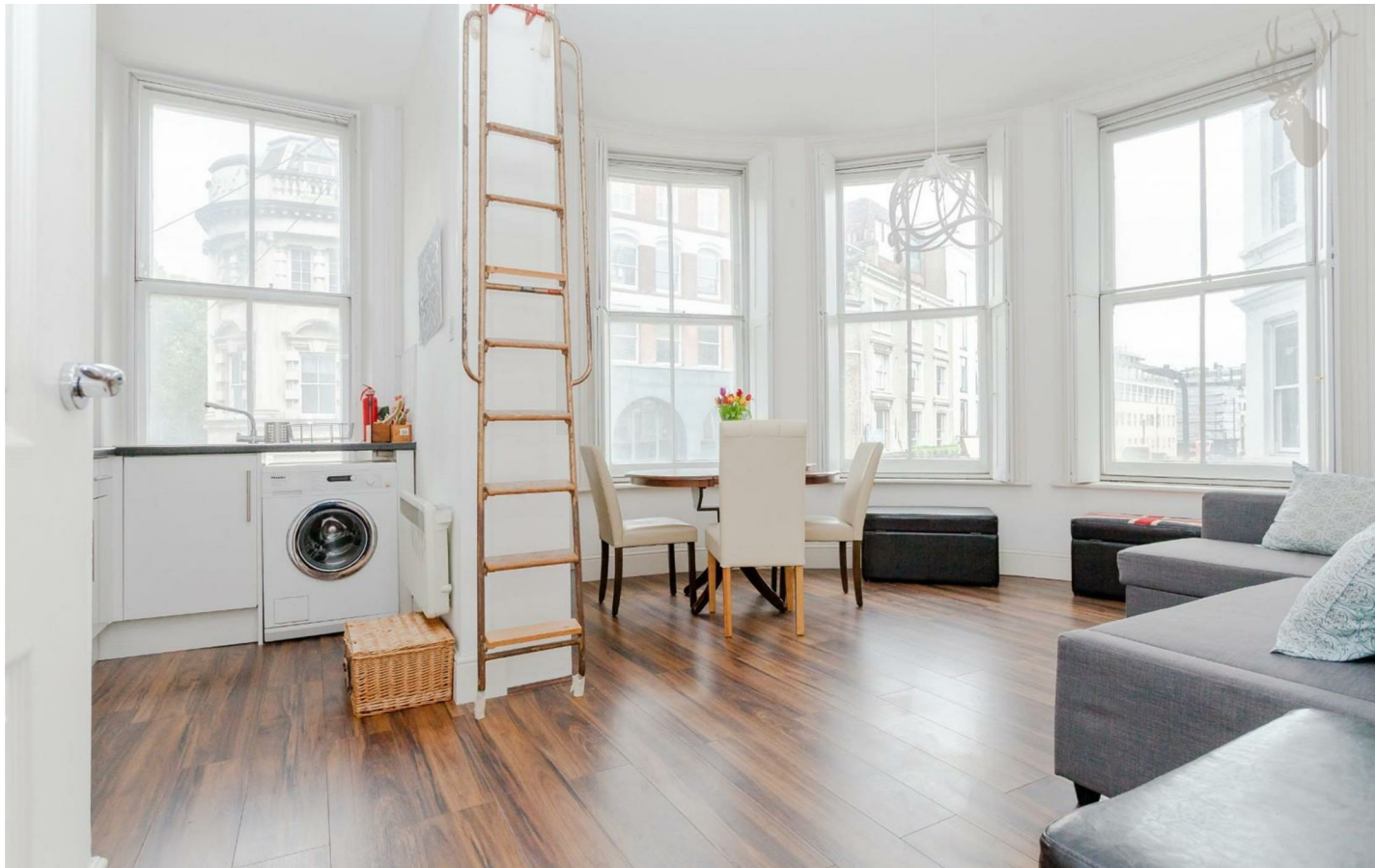




Shoreditch High Street, London, E1

BUTLER & STAG





**High ceilings, an abundance of natural light and a fantastic location are just a few of the features of this superb one bedroom conversion apartment in the heart of Shoreditch.**



- One Bedroom Conversion Apartment
- In the Heart of Shoreditch
- Shoreditch High Street Station Nearby
- Furnished
- Beautiful Building with High Ceilings
- Large Sash Windows
- Surrounded by Bars and Restaurants
- Available from February 2026

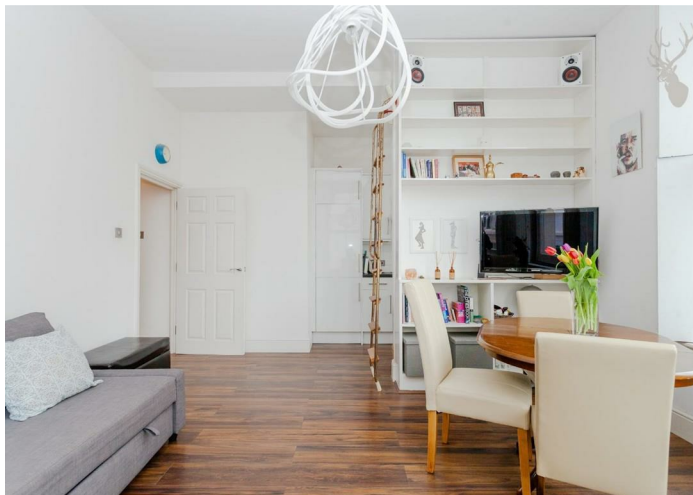
Situated within an imposing Victorian residence on the corner of Shoreditch High Street and vibrant Rivington Street, the apartment comprises of a bright reception with large sash windows, a semi open-plan modern kitchen, contemporary bathroom and a generous double bedroom with plenty of storage.

Conveniently located for easy access to the City and moments from the wealth of boutiques, cafes, bars and award-winning restaurants of Shoreditch, Brick Lane and Spitalfields.

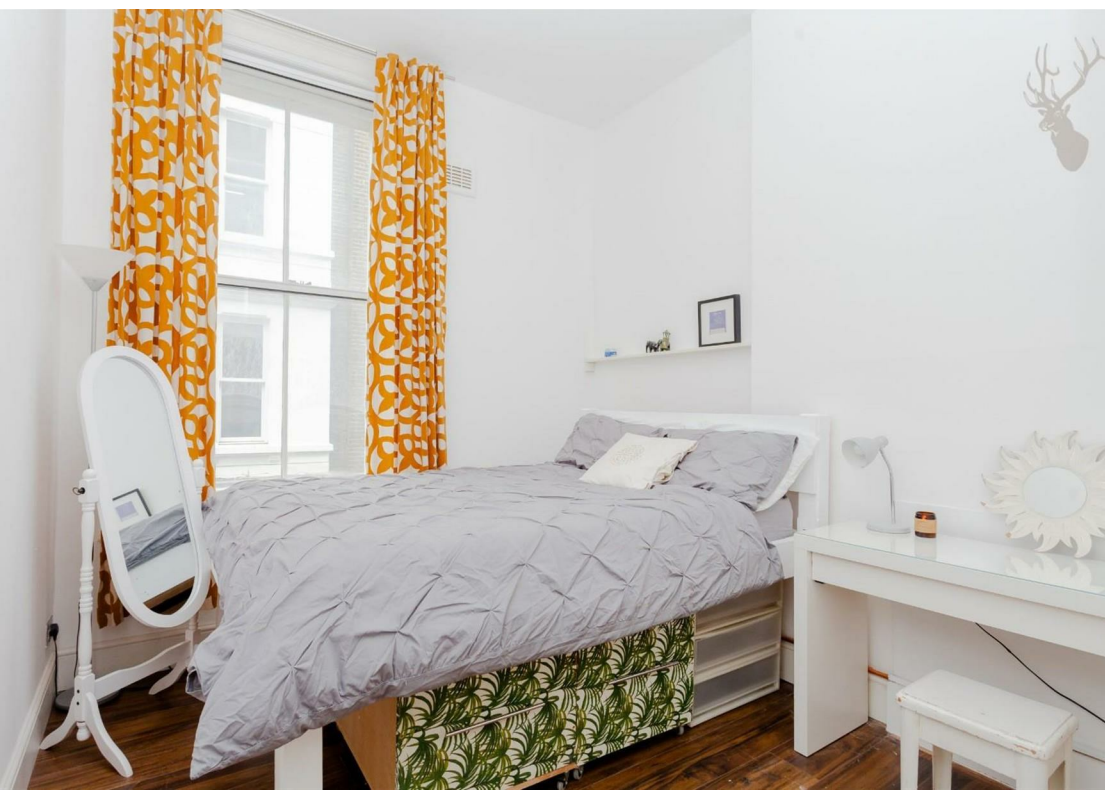
The transport links are also excellent with Shoreditch High Street, Old Street and Liverpool Street stations all in close proximity.

Perfect for a single professional or a couple, this must-see apartment is available from early February 2026 and is offered on a furnished basis.

EPC Rating D  
Council Tax Band C







## Shoreditch High Street, EC1

Approx. Gross Internal Area 463 Sq Ft - 43.01 Sq M

BUTLER & STAG



### First Floor

Floor Area 463 Sq Ft - 43.01 Sq M

Floor plan is for illustrative purposes only and is not to scale. Every attempt has been made to ensure the accuracy of the floor plan shown, however all measurements, fixtures, fittings and data shown are an approximate interpretation for illustrative purposes only.  
lpaplus.com

IMPORTANT NOTICE - These particulars have been prepared in good faith and they are not intended to constitute part of an offer or contract. We have not performed a structural survey on this property and the services, appliances and specific fittings have not been tested. All photographs, measurements, floor plans and distances referred to are given as a guide and should not be relied upon.

BUTLER & STAG

☎ 020 8102 1236

🏠 508 Roman Road, Bow, London, E3 5LU

✉ bow@butlerandstag.com

[www.butlerandstag.uk](http://www.butlerandstag.uk)