



21 Stoneway Walk, London, E3

BUTLER & STAG



CASH BUYERS ONLY
Situated along the serene banks of Regent's Canal within the sought-after Carriers Apartments / Bow Wharf, this beautifully presented one-bedroom residence offers contemporary waterside living at its finest.



Leasehold

- Waterside Development
- Private Balcony
- 538 Sq/Ft Internal Living Space
- Open Plan Concept Living
- Victoria Park A Moments Walk Away
- Third Floor Apartment
- One Bedroom
- Chain Free
- Lift Access To All Floors
- Bethnal Green Station Close By

Designed to maximise light and space, the apartment features an open-plan living and dining area that flows seamlessly onto a private balcony, providing breathtaking canal views.

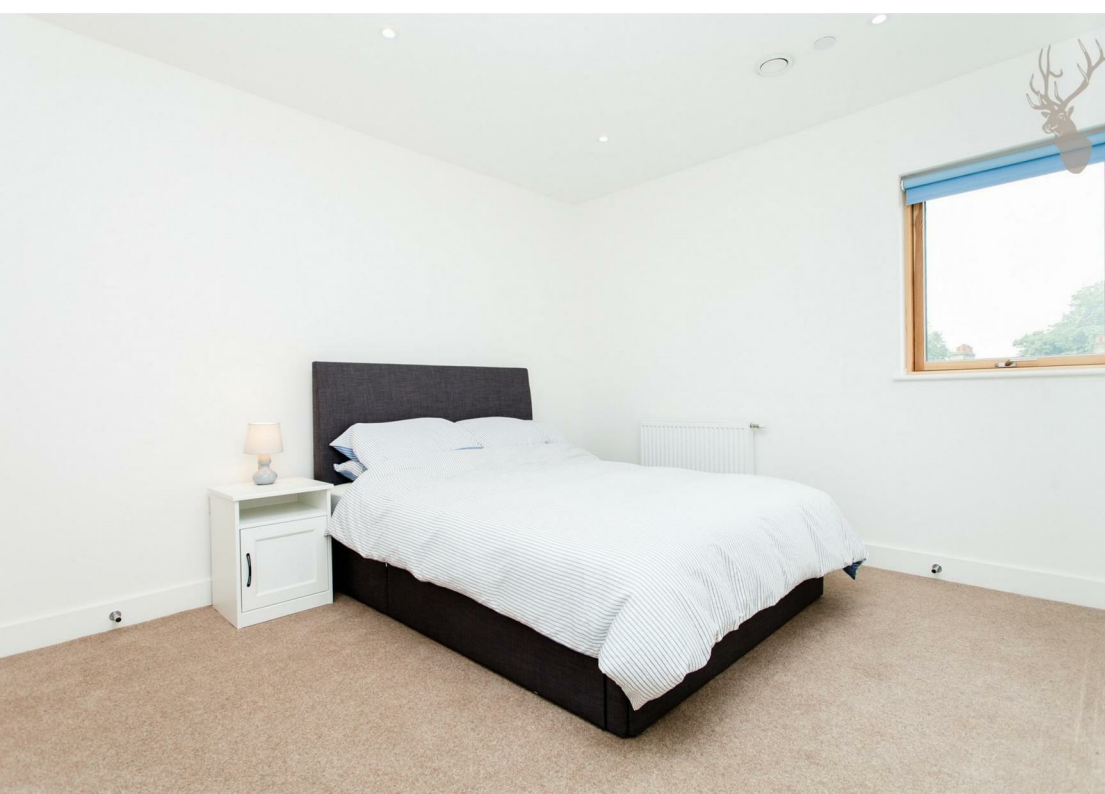
The modern kitchen comes fully fitted with high-quality appliances and sleek cabinetry, while the spacious bedroom benefits from generous wardrobe space and calm outlooks. A stylish bathroom and ample storage throughout further enhance the home's appeal.

Residents also enjoy secure entry and a village life style environment. Positioned in a charming, pocket off Old Ford Road, the neighbourhood offers a warm and welcoming atmosphere where everyday essentials and favourite local spots are just a short stroll away.

Canal-side walkways create a peaceful environment perfect for morning jogs, dog walks or leisurely weekend strolls. With a blend of long-established eateries, this is an area where neighbours greet each other, all whilst being moments from excellent transport links.

A stunning opportunity to experience London living with a tranquil waterside backdrop.





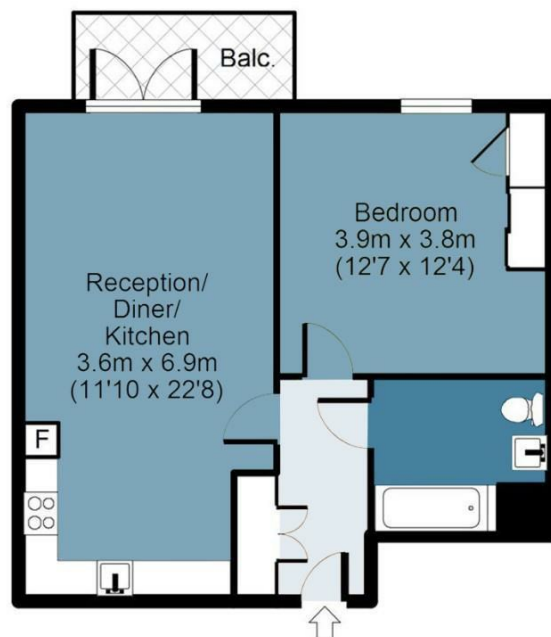
Stoneway Walk

Approx. Gross Internal Area 50 Sq M (538 Sq Ft)

BUTLER & STAG



Third Floor



Measurements are approximate and for illustration purposes only. While we do not doubt the accuracy and completeness, we advise you conduct a careful independent assessment of the property to determine monetary value.
© @modephoto.uk www.modephoto.co.uk

IMPORTANT NOTICE - These particulars have been prepared in good faith and they are not intended to constitute part of an offer or contract. We have not performed a structural survey on this property and the services, appliances and specific fittings have not been tested. All photographs, measurements, floor plans and distances referred to are given as a guide and should not be relied upon.

BUTLER & STAG

☎ 020 8102 1236

🏠 508 Roman Road, Bow, London, E3 5LU

✉ bow@butlerandstag.com

www.butlerandstag.uk