



Bromley High Street, London, E3

BUTLER & STAG





**Well presented two bedroom flat conveniently located close to key transport links, including Bow Church DLR and Bow Road underground stations.**



- Two Bedroom Flat
- Second Floor
- Excellent Transport Links Nearby
- Part Furnished
- Secure Purpose-Built Development
- Separate Living and Kitchen
- Plenty of Local Amenities
- Available from 17th December 2025

Situated on the second floor of a secure purpose-built development, this bright property comprises of a spacious reception room, separate kitchen, two double bedrooms and a bathroom.

The location is an excellent one for commuting connectivity and for enjoying the best of East London with Victoria Park, Shoreditch and Canary Wharf all within easy reach.

Perfectly proportioned for two sharing professionals or a couple seeking work-from-home space, this property is offered part furnished and is available from 17th December 2025.

EPC Rating C  
Council Tax Band B







## Rudstone House

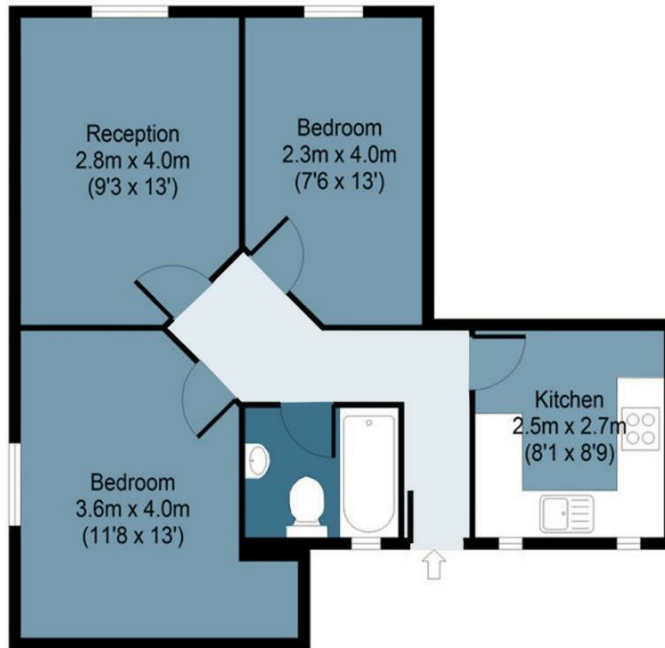
Approx. Gross Internal Area 52 Sq M ( 559 Sq Ft )

BUTLER & STAG



### Second Floor

Approx. 52 Sq. meters (559 Sq. feet)



Measurements are approximate and for illustration purposes only. While we do not doubt the accuracy and completeness, we advise you conduct a careful independent assessment of the property to determine monetary value.  
© @modephoto.uk www.modephoto.co.uk

IMPORTANT NOTICE - These particulars have been prepared in good faith and they are not intended to constitute part of an offer or contract. We have not performed a structural survey on this property and the services, appliances and specific fittings have not been tested. All photographs, measurements, floor plans and distances referred to are given as a guide and should not be relied upon.

BUTLER & STAG

☎ 020 8102 1236

🏠 508 Roman Road, Bow, London, E3 5LU

✉ bow@butlerandstag.com

[www.butlerandstag.uk](http://www.butlerandstag.uk)